

# Renovated Home on 6± Acres

Sunflower County

99 N Wade Road, Drew, MS 38737



**\$210,000**



**Tom  
Smith  
LAND AND  
HOMES**

**Expect More. Get More.**

# Property Information

## Location:

- 15 Minutes to Ruleville, MS (11.5 Miles)

## Coordinates:

- 33.84095, -90.4653

## Property Use:

- Residential

# Property Highlights

- 6± Acres
- 3 Bedrooms
- 2 Bathrooms
- 1,532± SqFt
- Built in 1944
- Renovated
- Small Pond
- Shed
- Carport



Expect More. Get More.

**ANTHONY STEEN**

ALC®, REALTOR®

Office: 601.898.2772

Cell: 662.645.5151

Anthony@TomSmithLand.com

**A Real Estate Expert  
You Can Trust!**



# The Residence

1,532± SqFt

Renovated home located at 99 N Wade Road in Drew, Sunflower County. This property features three bedrooms, two bathrooms, and 1,532± square feet of heated and cooled living space. The kitchen is spacious, offering plenty of cabinet and counter space, along with stainless steel appliances. The primary bathroom has double sink vanities and a large walk-in shower, while the second bathroom includes a jetted tub. The property spans 6± acres and includes a small pond and a shed. For a private showing of this wonderful property, call Anthony Steen today!



**ANTHONY  
STEEN**

ALC®, REALTOR®

Office: 601.898.2772

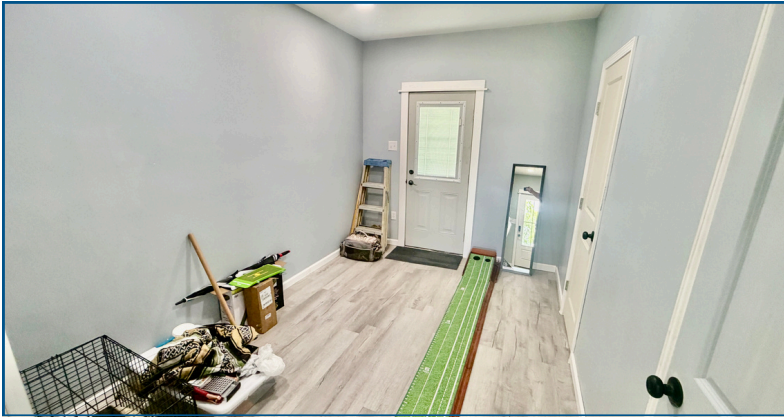
Cell: 662.645.5151

Anthony@TomSmithLand.com



Expect More. Get More.

# The Residence



**ANTHONY  
STEEN**

ALC®, REALTOR®

Office: 601.898.2772

Cell: 662.645.5151

Anthony@TomSmithLand.com



Expect More. Get More.

# The Residence



**ANTHONY  
STEEN**

ALC®, REALTOR®

Office: 601.898.2772

Cell: 662.645.5151

Anthony@TomSmithLand.com



Expect More. Get More.

# The Residence



**ANTHONY  
STEEN**

ALC®, REALTOR®

Office: 601.898.2772

Cell: 662.645.5151

Anthony@TomSmithLand.com



Expect More. Get More.

# Aerial Map

[VIEW INTERACTIVE MAP](#)



**ANTHONY  
STEEN**

ALC®, REALTOR®

Office: 601.898.2772

Cell: 662.645.5151

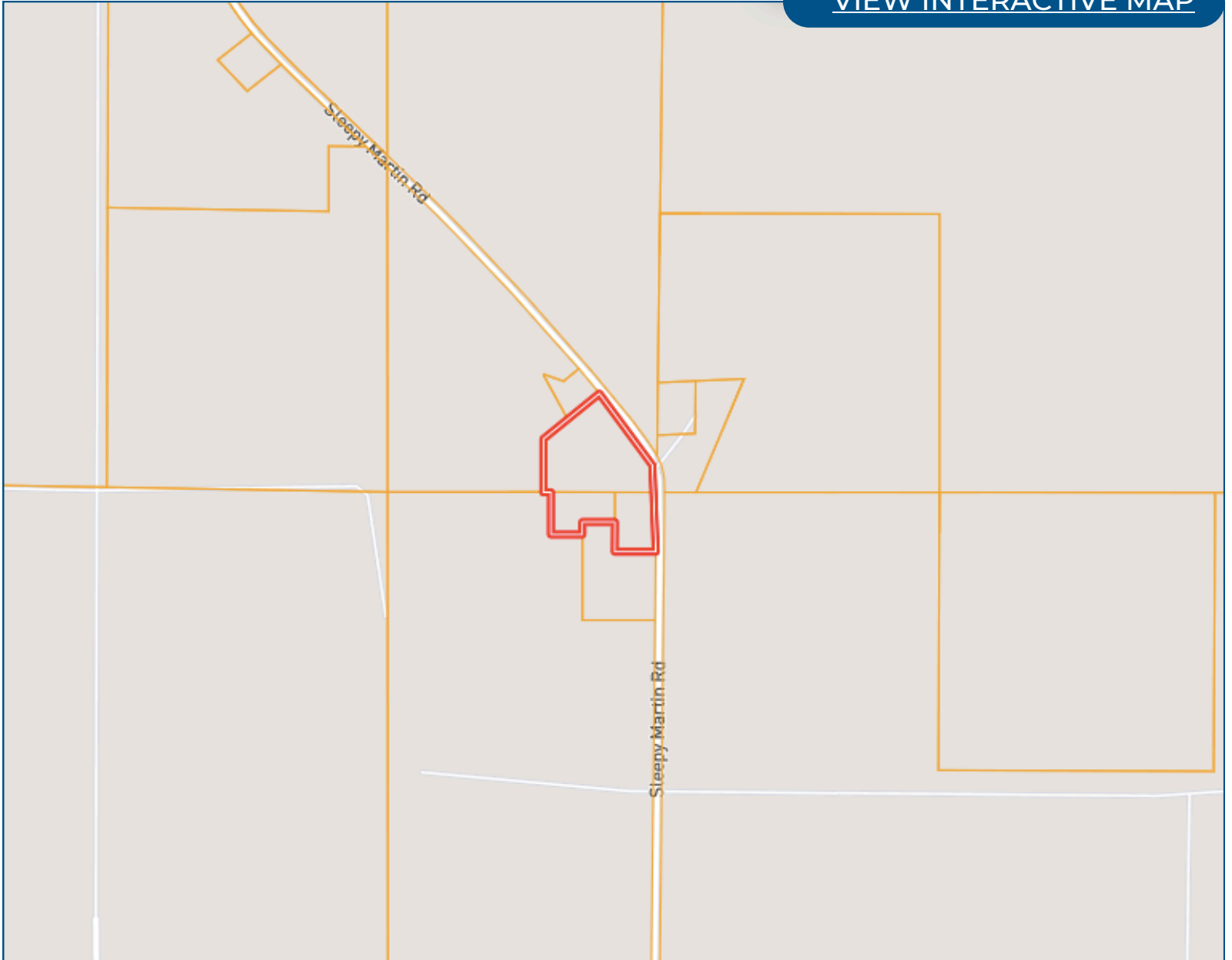
Anthony@TomSmithLand.com



Expect More. Get More.

# Ownership Map

[VIEW INTERACTIVE MAP](#)



**ANTHONY  
STEEN**

ALC®, REALTOR®

Office: 601.898.2772

Cell: 662.645.5151

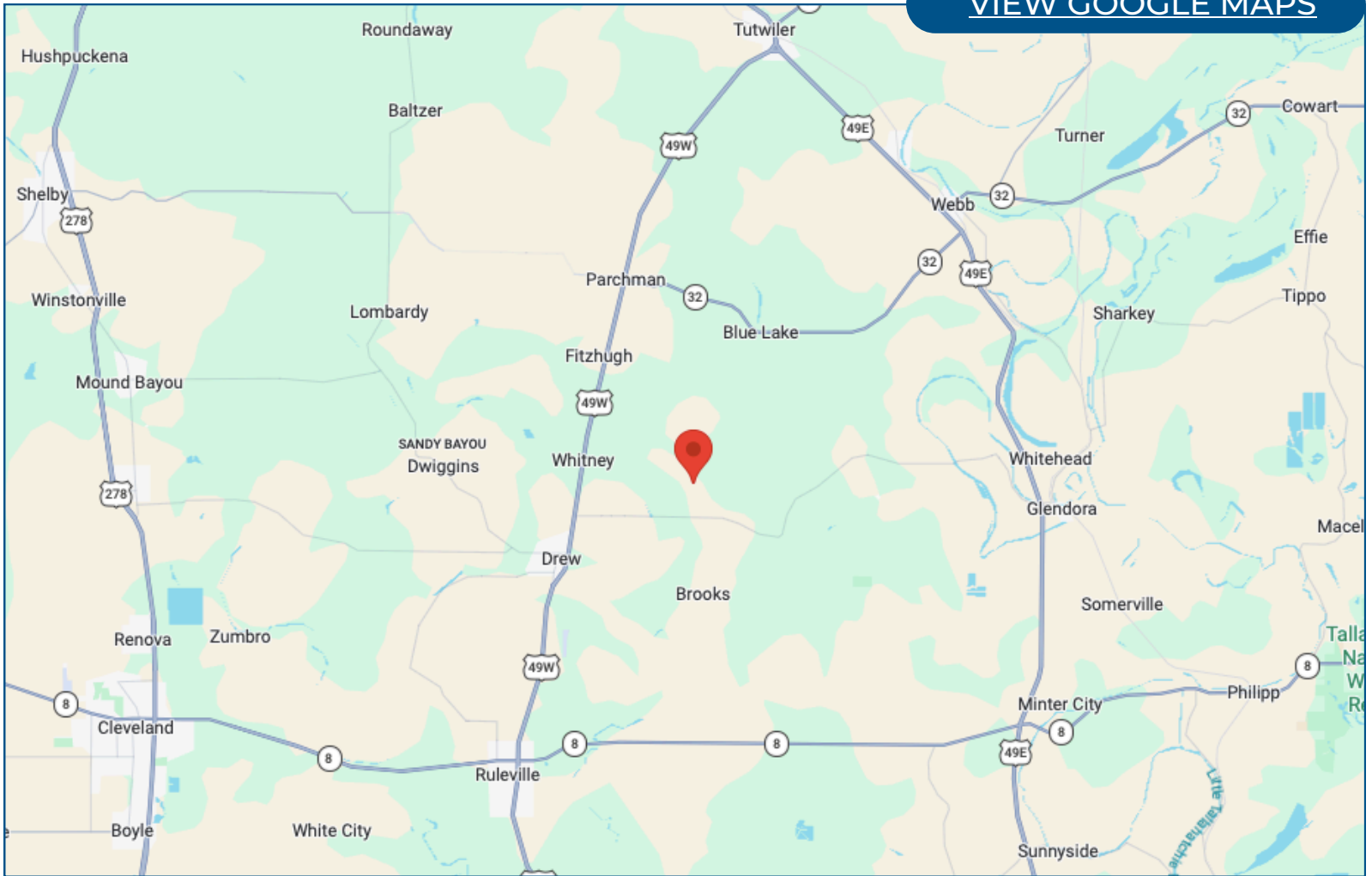
Anthony@TomSmithLand.com



Expect More. Get More.

# Directional Map

[VIEW GOOGLE MAPS](#)



## Directions from Hwy 8 and Hwy 3, Ruleville, MS 38771

Travel on Hwy 3 N for 8.3 miles. Turn right onto McDaniels Road for 2.6 miles, then turn right onto Sleepy Martin Road. After 0.6 miles, the house will be on the right.

**ANTHONY  
STEEN**

ALC®, REALTOR®

Office: 601.898.2772

Cell: 662.645.5151

Anthony@TomSmithLand.com



Expect More. Get More.

# Listing Agent



## Anthony Steen

ALC, Realtor & Land Specialist

Anthony was born in Bolivar County, but his family moved shortly after to Clarksdale, MS. He spent his primary educational and athletic years attending and playing sports at Lee Academy. As a child, he played baseball, football, basketball, soccer and even threw shot put and disc for track. After graduating in 2009, Anthony continued his education and athletic career for the next five years at the University of Alabama on a football scholarship. He majored in Health Environmental Science and completed his bachelor's degree and was a part of two SEC Championship and three National Championship teams with the Crimson Tide. After college, Anthony played for the Arizona Cardinals and the Miami Dolphins in the National Football League for 4 years until he decided to retire and come back to the Mississippi Delta where he grew up.

Growing up, Anthony was an avid hunter and fisherman who loved spending time helping his grandfather on the farm growing cotton and soybeans. His father and grandfather helped instill the importance of and a love for taking care of the land and wildlife around him. He enjoys all types of hunting from deer, duck, and turkey, to hogs, frogs, and pheasant. After retiring from the NFL, Anthony knew he wanted to come back home to the land he loved so much as a child.

Anthony currently resides in Tallahatchie County where he farmed soybeans with his family for a few years. After much deliberation and praying, Anthony knew it was time to start a new career path. He was certain he wanted to find a way to share his passion for the outdoors with others while staying true to his country roots. As a college athlete, Anthony learned hard work, dedication, discipline, trust, and how to work with others. These traits along with Anthony's personality, honesty, and knowledge of the land make him the perfect agent for you.

**OFFICE: 601.898.2772**

**CELL: 662.645.5151**

[Anthony@TomSmithLand.com](mailto:Anthony@TomSmithLand.com)

**CALL ANTHONY STEEN  
TODAY!**

