

Whitetail Lake Lodge

1314 CR 53, Prattville, Alabama 36067

Eric Leisy, ALC, GRI
334-657-6707
ericleisy@saundersrealestate.com

PROPERTY OVERVIEW



Sale Price

\$1,695,000

Offering Summary

Acreage:	144.74 Acres
Price / Acre:	\$11,711
State:	Alabama
City:	Prattville
County:	Autauga
Property Type:	Hunting and Recreational, Acreage and Estates, Timberland

Property Overview

Whitetail Lake Lodge | 144 ± Acre Turnkey Recreational Retreat with Trophy Whitetails, 10 ± Acre Lake & Luxury Lodge

Tucked away just minutes from I-65, Whitetail Lake Lodge is an extraordinary 144 ± acre high-fenced recreational retreat offering the rare combination of world-class hunting, luxury accommodations, and unforgettable entertainment space all in one turnkey package.

From the moment you enter through the gated entrance, it becomes clear this property was designed for gathering, relaxing, and creating memories that last for generations.

At the heart of the property sits a stunning 10 +/- acre lake, complete with a one-of-a-kind covered bridge and an exceptional lakeside pavilion that feels tailor-made for everything from quiet mornings with coffee to large family celebrations and corporate events. The setting is simply remarkable.

Overlooking the property is a beautifully appointed 5,000+ square foot lodge that comfortably blends rustic charm with modern convenience. Fully furnished and move-in ready, the lodge features spacious gathering areas, an outdoor kitchen, multiple entertainment spaces, and everything needed to immediately begin enjoying the property from day one.



Property Overview Continued

For the serious outdoorsman, this farm checks every box. The high-fenced hunting operation supports an impressive population of trophy whitetail deer, along with a healthy mix of younger deer that provide exceptional herd diversity and future potential. The turkey hunting is outstanding, and the dove hunting is unlike anything most hunters have experienced. Large flights of dove consistently use the property, creating the opportunity for truly unforgettable shoots with family, friends, or clients.

Currently used as a private family and client entertainment retreat, the possibilities here extend far beyond hunting. The property would also make an exceptional: Corporate retreat, Event venue, Bed & Breakfast, Wedding venue, or Private family compound.

Properties capable of combining luxury accommodations, trophy hunting, fishing, entertaining, and accessibility at this level are incredibly difficult to find. Whether you envision hosting clients around the pavilion, chasing trophy bucks in the fall, enjoying legendary dove shoots with friends, or simply creating a place where generations gather together, Whitetail Lake Lodge was built for exactly that purpose.

This is more than a hunting property. It's a destination.

Here's to your legacy – and every acre of it. Contact me, Eric Leisy, for more information.

PROPERTY HIGHLIGHTS



Property Highlights

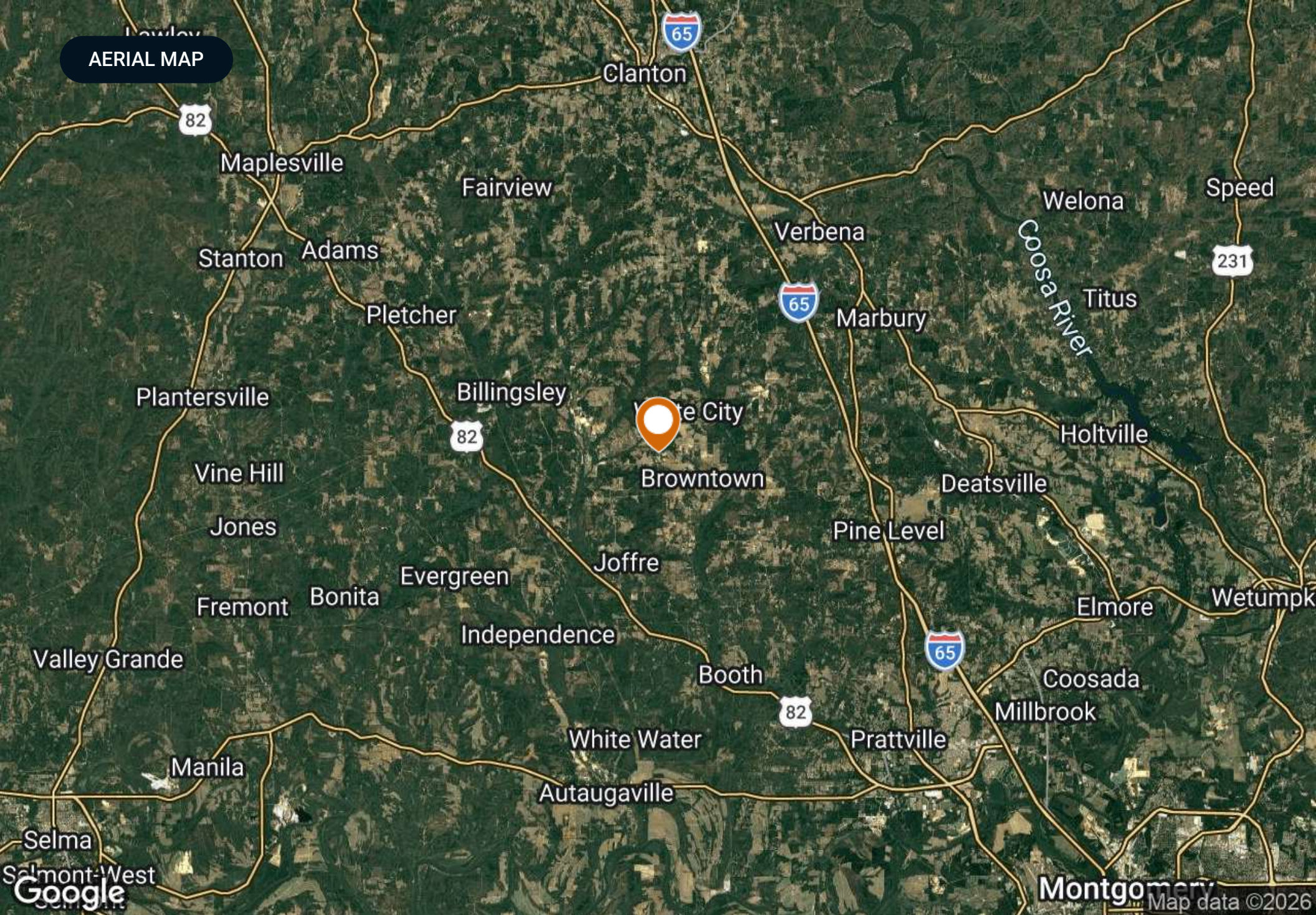
- 144 ± acre high-fenced recreational property
- Located approximately 10 minutes from I-65
- 10 ± acre stocked lake
- Unique covered bridge
- Large covered pavilion overlooking the lake
- 5,000+ sq ft fully furnished lodge
- Outdoor kitchen
- Trophy whitetail deer herd
- Strong turkey hunting
- Exceptional dove hunting opportunities
- Multiple shooting houses included
- Gated entrance
- Security system
- 2022 Mahindra 110 HP tractor included
- 15' batwing cutter included
- Zero-turn mower included
- Approximately \$50,000 in additional fencing materials included
- Turnkey setup for immediate use

SPECIFICATIONS & FEATURES



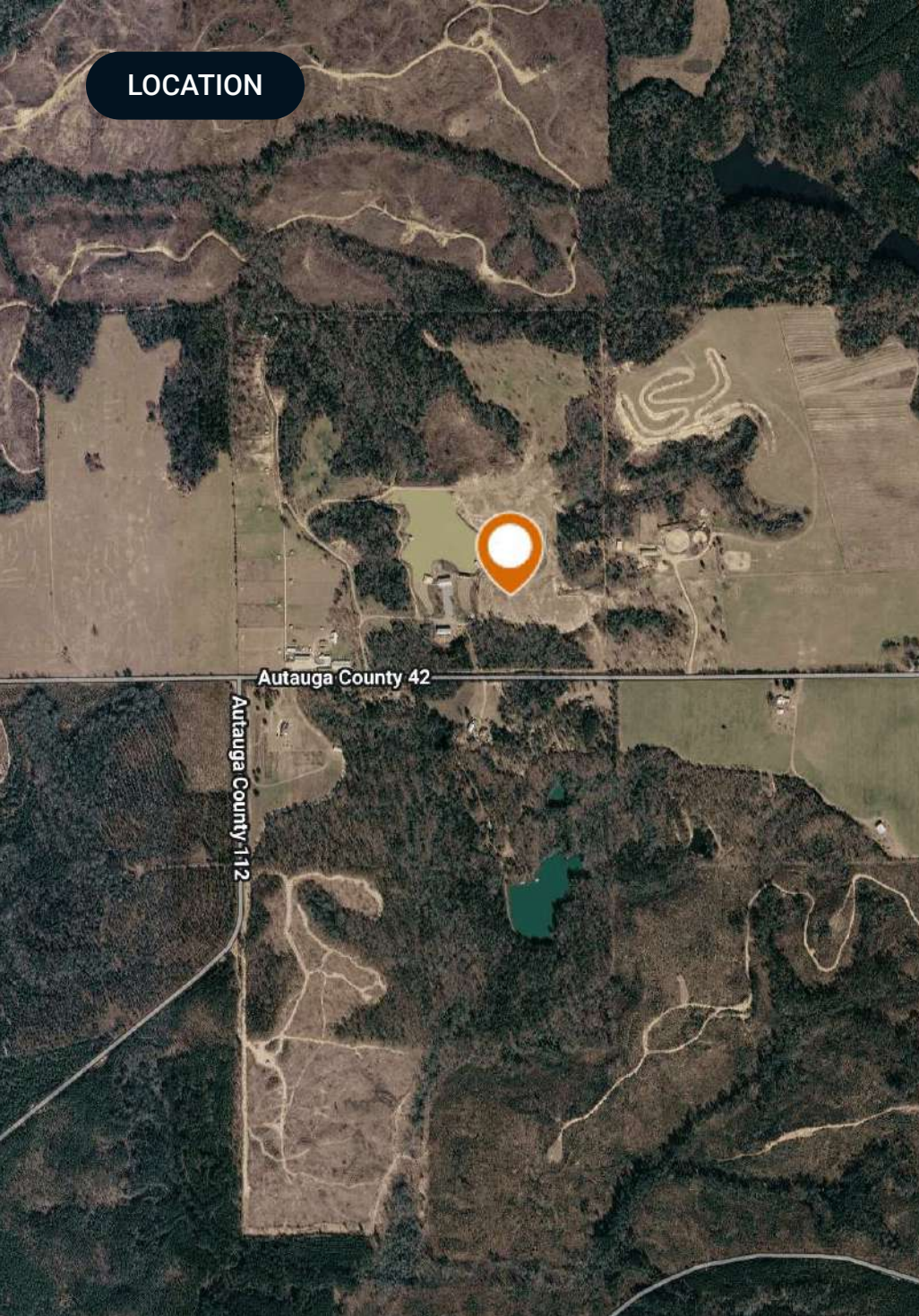
Specifications & Features

Lake Frontage / Water Features:	10 ± acre lake with a covered bridge and covered pavilion for entertaining
Nearest Point of Interest:	I-65 Autaugaville, Alabama US Highway 82
Fencing:	High Fence
Current Use:	High Fenced Recreational Property. Primarily used for entertaining clients and friends as well as for family retreats.
Potential Recreational / Alt Uses:	Corporate Retreat, Bed and Breakfast, Wedding Venue, Full-Time Residence
Land Cover:	A mix of open grassland and mature timber <ul style="list-style-type: none">• 5000+ square-foot lodge built in 2013
Structures & Year Built:	<ul style="list-style-type: none">• Covered bridge• Barn• Covered pavilion overlooking the lake



AERIAL MAP

LOCATION



Location & Driving Directions

Parcel: 0706130000004002 &
0706130000004003

GPS: 32.6214327, -86.6199326

**Driving
Directions:** Please call Eric Leisy at 334-657-6707
for directions.

**Showing
Instructions:** Please call Eric Leisy at 334-657-6707
for showing instructions.

OUTLINE MAP

Whitetail Lake Lodge

- Polygon
- Census Roadways TIGER
- County Roads
- Interstates
- State Roads
- Highways
- Parcel
- Parcel (selected)



ADDITIONAL PHOTOS



ADDITIONAL PHOTOS



ADDITIONAL PHOTOS



ADDITIONAL PHOTOS



ADVISOR BIOGRAPHY



Eric Leisy, ALC, GRI

Senior Advisor

ericleisy@saundersrealestate.com

Direct: **877-518-5263 x394** | Cell: **334-657-6707**

Professional Background

Eric Leisy, ALC, GRI is a Senior Advisor at Saunders Real Estate, helping clients navigate the complex process of buying and selling land. With Eric, clients receive trusted guidance, market expertise, and proven results throughout every stage of a land transaction.

With more than 30 years of experience, including land brokerage, commercial lending, appraisal, development, and investment analysis, Eric brings a comprehensive perspective to each property. He brings a strong understanding of the factors that influence land value and potential, such as timber characteristics, soil types, wildlife habitat, agricultural use, access, and overall feasibility, helping clients better understand their options and make confident decisions. Eric's experience developing lifestyle centers, power centers, and retail sites like Walgreens also provides insight into commercial and residential development potential.

Eric is a graduate of the University of Alabama with a degree in Corporate Finance and Investments, giving him a strong foundation in financial analysis and investment evaluation. He has earned recognition as a seven-time national APEX Award recipient through the REALTORS® Land Institute (RLI) and holds the Accredited Land Consultant (ALC) and Graduate, REALTOR® Institute (GRI) designations. These honors reflect his ability to close complex transactions and deliver measurable results. In 2025, he was named Land Realtor of the Year for the RLI Alabama Chapter.

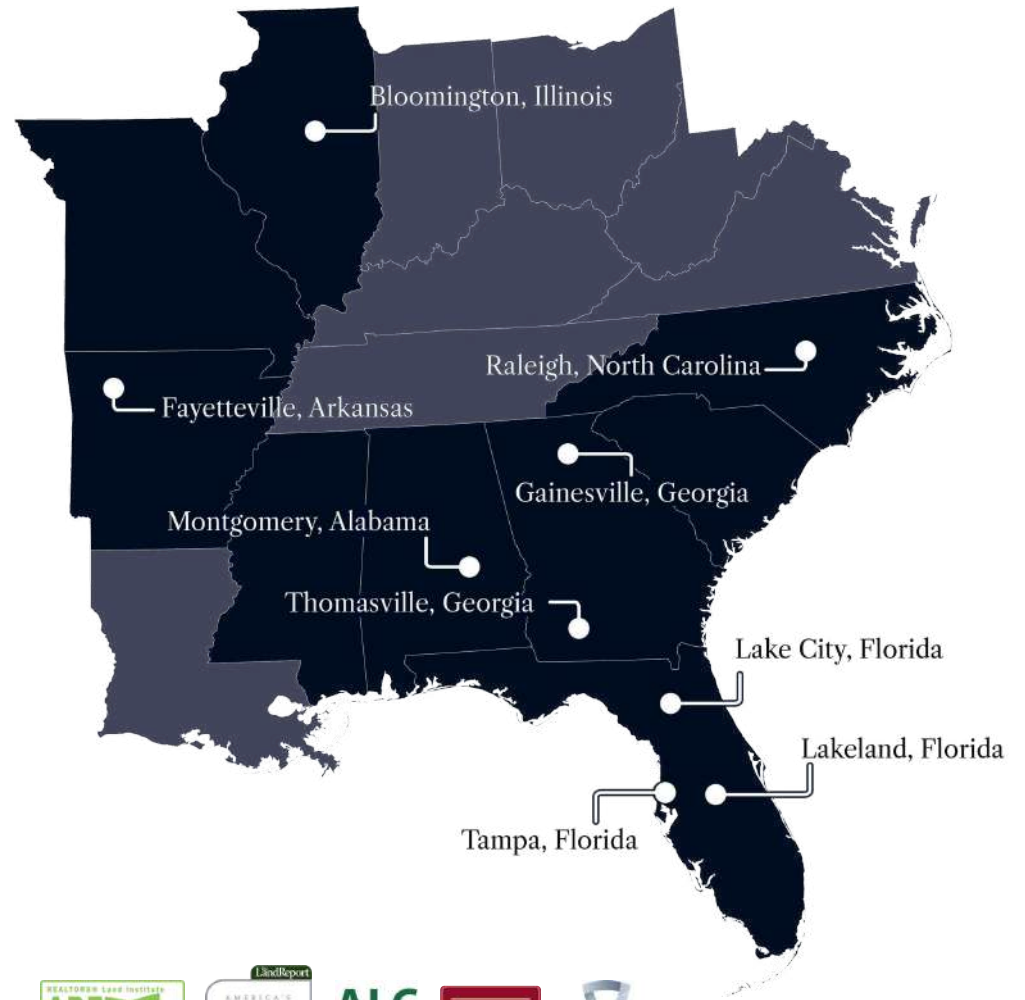
He has served in national and state leadership roles with the REALTORS® Land Institute and remains active with the Alabama Forestry Association, Alabama Wildlife Federation, and National Association of REALTORS®. These networks provide access to potential buyers, off-market opportunities, and market insights that help his clients.

Eric works with families of legacy farms and estates, heirs managing inherited property, farmers and timber investors, developers and planners, conservation-focused landowners, and recreational property buyers and sellers. Through acquisition or disposition, he combines financial insight, transaction expertise, and practical experience to guide clients through each decision, helping them achieve their goals.

Eric has been married to Melissa for 40 years. His hobbies, which include vegetable gardening, fly fishing, and turkey hunting, keep him outdoors and closely connected to the land. Playing rugby at the University of Alabama, and later coaching youth sports, taught him teamwork, discipline, and strategy: skills he applies to complex negotiations and multi-party transactions to reach successful outcomes.



At Saunders Real Estate, we deliver full-service real estate solutions, built on more than 30 years of trusted experience. Our dedicated teams offer tailored guidance backed by deep regional insight and a proven track record. We believe that successful outcomes start with strong relationships built on trust and a shared commitment to your goals.



877-518-5263 • info@saundersrealestate.com