

**15± ACRES**  
**ADAMS COUNTY, MS**  
**\$123,255**



**SMALLTOWN**  
HUNTING PROPERTIES  
& REAL ESTATE<sup>SM</sup>

OFFICE (769) 888-2522

# THE ADAMS 15

# PROPERTY PROFILE

## LOCATION:

- Aberdeen Road  
Natchez, MS 39120
- Adams County
- 6± Miles S of Natchez
- 86± Miles N of Baton Rouge, LA

## PROPERTY USE:

- Investment
- Development
- Recreational
- Hunting
- Potential Home/Cabin Site

## COORDINATES:

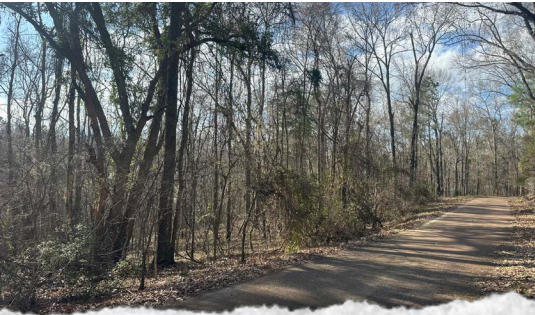
- 31.489899, -91.393365

## TAX INFORMATION:

- TBD

## PROPERTY INFORMATION:

- 15± Acres
- Frontage on Aberdeen Road
- Mixed Timber
- Pond
- Deer & Small Game
- Utilities Available Nearby



**SMALLTOWN**  
HUNTING PROPERTIES  
& REAL ESTATE<sup>SM</sup>

**BRADEN SMITH**

LAND SPECIALIST

C: 601-757-9193

O: 769-888-2522

[braden@smalltownproperties.com](mailto:braden@smalltownproperties.com)

4848 Main St. - Flora, MS 39071

[smalltownproperties.com](http://smalltownproperties.com)

Information is believed to be accurate but not guaranteed.

# WELCOME TO THE ADAMS 15

**WELCOME TO THE ADAMS 15 IN NATCHEZ, MISSISSIPPI.** The Adams 15 is a great option for anyone looking for a smaller tract with a homesite or development potential in Adams County. Whether you want a place to build your dream home, enjoy country living, or invest in land with future upside, the Adams 15 has plenty to offer.

Located roughly six miles south of Natchez, this tract combines the peace and quiet of the country with the convenience of being close to town. The property consists of mixed hardwood timber with multiple areas that would make excellent homesites. Access comes directly off Aberdeen Road, and utilities are available nearby.

The tract also offers solid recreational value with great hunting opportunities and an established population of deer and small game, making it a property you can enjoy long before you ever build on it.

**Contact Braden Smith today to schedule a private showing or for more information.**



**SMALLTOWN**  
HUNTING PROPERTIES  
& REAL ESTATE<sup>SM</sup>

**BRADEN SMITH**  
LAND SPECIALIST

C: 601-757-9193

O: 769-888-2522

[braden@smalltownproperties.com](mailto:braden@smalltownproperties.com)

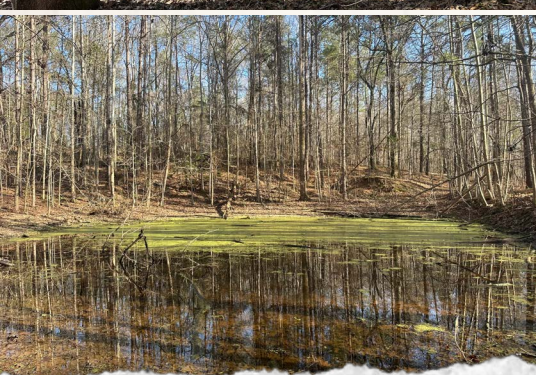
4848 Main St. - Flora, MS 39071

[smalltownproperties.com](http://smalltownproperties.com)

Information is believed to be accurate but not guaranteed.

15 ± ACRES

ADAMS COUNTY, MISSISSIPPI



**SMALLTOWN**  
HUNTING PROPERTIES  
& REAL ESTATE<sup>SM</sup>

**BRADEN SMITH**  
LAND SPECIALIST

C: 601-757-9193

O: 769-888-2522

[braden@smalltownproperties.com](mailto:braden@smalltownproperties.com)

4848 Main St. - Flora, MS 39071

[smalltownproperties.com](http://smalltownproperties.com)

Information is believed to be accurate but not guaranteed.

15 ± ACRES

ADAMS COUNTY, MISSISSIPPI



**SMALLTOWN**  
HUNTING PROPERTIES  
& REAL ESTATE<sup>SM</sup>

**BRADEN SMITH**

LAND SPECIALIST

C: 601-757-9193

O: 769-888-2522

[braden@smalltownproperties.com](mailto:braden@smalltownproperties.com)

4848 Main St. - Flora, MS 39071

[smalltownproperties.com](http://smalltownproperties.com)

Information is believed to be accurate but not guaranteed.

15 ± ACRES

ADAMS COUNTY, MISSISSIPPI



**SMALLTOWN**  
HUNTING PROPERTIES  
& REAL ESTATE<sup>SM</sup>

**BRADEN SMITH**

LAND SPECIALIST

C: 601-757-9193

O: 769-888-2522

[braden@smalltownproperties.com](mailto:braden@smalltownproperties.com)

4848 Main St. - Flora, MS 39071

[smalltownproperties.com](http://smalltownproperties.com)

Information is believed to be accurate but not guaranteed.

15 ± ACRES

ADAMS COUNTY, MISSISSIPPI



**SMALLTOWN**  
HUNTING PROPERTIES  
& REAL ESTATE<sup>SM</sup>

**BRADEN SMITH**

LAND SPECIALIST

C: 601-757-9193

O: 769-888-2522

[braden@smalltownproperties.com](mailto:braden@smalltownproperties.com)

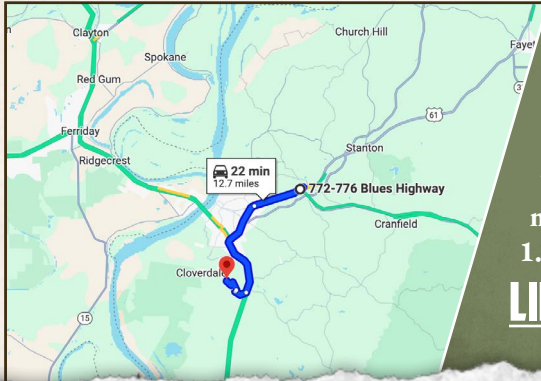
4848 Main St. - Flora, MS 39071

[smalltownproperties.com](http://smalltownproperties.com)

Information is believed to be accurate but not guaranteed.

15 ± ACRES

ADAMS COUNTY, MISSISSIPPI



Directions From the Intersection of US-61 and US-98 in Natchez, MS: Travel south 3.4 miles on US-61. Keep left to continue on US-61 S and proceed 6.9 miles. Turn right on Dunbar Road and continue 0.8 miles. Turn right on Stirling Road, and in 0.1 miles, turn left onto Aberdeen Road. In 1.2 miles, the property will be on your left.

**LINK TO GOOGLE MAP DIRECTIONS**



**SMALLTOWN**  
HUNTING PROPERTIES  
& REAL ESTATE<sup>SM</sup>

**BRADEN SMITH**  
LAND SPECIALIST  
C: 601-757-9193  
O: 769-888-2522  
braden@smalltownproperties.com  
4848 Main St. - Flora, MS 39071  
smalltownproperties.com

Information is believed to be accurate but not guaranteed.