



**8± ACRES**  
**SHELBY COUNTY, AL**  
**\$165,000**



**SMALLTOWN**  
HUNTING PROPERTIES  
& REAL ESTATE

OFFICE (334) 931-0090 | [WWW.SMALLTOWNPROPERTIES.COM](http://WWW.SMALLTOWNPROPERTIES.COM)

# THE SHELBY 8

## PROPERTY PROFILE

### LOCATION:

- Cornerstone Drive  
Calera, AL 35040
- Lakewood Subdivision
- Shelby County
- 8± Miles NE of Downtown Calera
- 9± Miles SW of Columbiana
- 40± Miles SE of Birmingham
- 60± Miles NW of Montgomery

### COORDINATES:

- 33.1132, -86.66405

### PROPERTY USE:

- Potential Home/Cabin Site

### PROPERTY INFORMATION:

- 8± Private Acres
- Lake Frontage
- Calera School System
- Back of the Cul-de-sac
- Last Lot Available in  
Subdivision

### TAX INFORMATION:

- 2025 Taxes: \$1,640.52



**SMALLTOWN**  
HUNTING PROPERTIES  
& REAL ESTATE<sup>SM</sup>

**DANIEL HAYES**

LAND SPECIALIST

C: 205-317-0161

O: 334-931-0090

[daniel@smalltownproperties.com](mailto:daniel@smalltownproperties.com)

2121 5th Street, Ste 206 - Meridian, MS 39301

[smalltownproperties.com](http://smalltownproperties.com)

Information is believed to be accurate but not guaranteed.

# WELCOME TO THE SHELBY 8

WELCOME TO THE SHELBY 8, THE LAST LOT AVAILABLE IN THE DESIRABLE LAKEWOOD SUBDIVISION OFF HIGHWAY 42 IN CALERA, ALABAMA. This beautiful 8± acre property in Shelby County sits privately at the end of a quiet cul-de-sac, offering the perfect blend of seclusion and convenience.

Enjoy lake frontage along the back side of the property with plenty of room to build your dream home while still having space to roam. Conveniently located between Calera and Columbiana, with quick access to Highway 42 and nearby amenities, the Shelby 8 is worth a look.

**Contact Daniel Hayes today to schedule a private showing  
and experience #TheSmallTownWay.**



**SMALLTOWN**  
HUNTING PROPERTIES  
& REAL ESTATE<sup>SM</sup>

**DANIEL HAYES**

LAND SPECIALIST

C: 205-317-0161

O: 334-931-0090

[daniel@smalltownproperties.com](mailto:daniel@smalltownproperties.com)

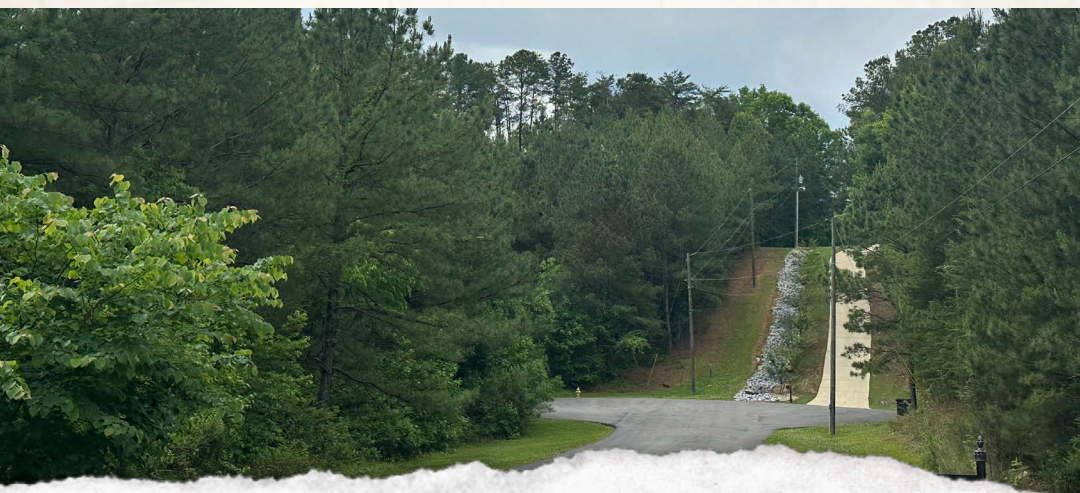
2121 5th Street, Ste 206 - Meridian, MS 39301

[smalltownproperties.com](http://smalltownproperties.com)

Information is believed to be accurate but not guaranteed.

8± ACRES

SHELBY COUNTY, ALABAMA



**SMALLTOWN**  
HUNTING PROPERTIES  
& REAL ESTATE<sup>SM</sup>

**DANIEL HAYES**

LAND SPECIALIST

C: 205-317-0161

O: 334-931-0090

[daniel@smalltownproperties.com](mailto:daniel@smalltownproperties.com)

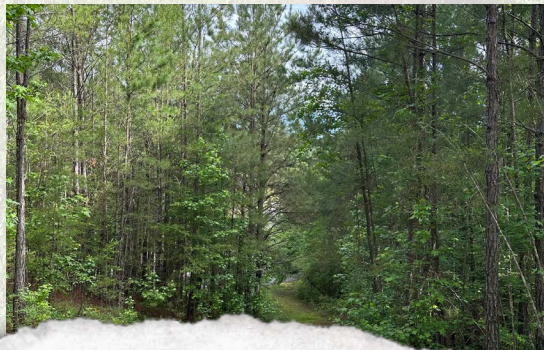
2121 5th Street, Ste 206 - Meridian, MS 39301

[smalltownproperties.com](http://smalltownproperties.com)

Information is believed to be accurate but not guaranteed.

8± ACRES

SHELBY COUNTY, ALABAMA



**SMALLTOWN**  
HUNTING PROPERTIES  
& REAL ESTATE<sup>SM</sup>

**DANIEL HAYES**

LAND SPECIALIST

C: 205-317-0161

O: 334-931-0090

[daniel@smalltownproperties.com](mailto:daniel@smalltownproperties.com)

2121 5th Street, Ste 206 - Meridian, MS 39301

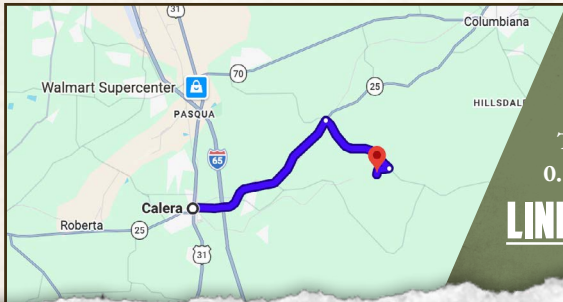
[smalltownproperties.com](http://smalltownproperties.com)

*Information is believed to be accurate but not guaranteed.*

8± ACRES

SHELBY COUNTY, ALABAMA

land id. LINK



Directions From Calera, AL: Travel north on AL-25 for 4.8 miles. Turn right onto County Road 42 and continue for 2.4 miles. Turn right onto Cornerstone Drive and proceed 0.6 miles to the lot at the back of the cul de sac.

[LINK TO GOOGLE MAP DIRECTIONS](#)



**SMALLTOWN**  
HUNTING PROPERTIES  
& REAL ESTATE<sup>SM</sup>

**DANIEL HAYES**

LAND SPECIALIST

C: 205-317-0161

O: 334-931-0090

[daniel@smalltownproperties.com](mailto:daniel@smalltownproperties.com)

2121 5th Street, Ste 206 - Meridian, MS 39301

[smalltownproperties.com](http://smalltownproperties.com)

Information is believed to be accurate but not guaranteed.