

# Dacusville Road Tract | ±17.18 Acres

635 Dacusville Road, Marietta, SC 29661



**SALE PRICE: \$1,500,000**

**VIEW SITE VIDEO**



## Property Features

- Greenville County Tax Map #s: 0513060100503 & 0513060100502
- 3 BR/3 BA brick home (±2,139 SF) with in-ground pool, porch, and patio (Built in 1998)
- Public Water available
- Includes a 2-car garage and an outdoor storage structure
- ±137' of frontage on Dacusville Road
- ±500' of frontage on the North Saluda River
- 4.5 acres of fields and maintained powerline
- A small creek runs through the interior of the property for ±750'
- An adjacent ±51.4 acre tract is also available to purchase
- Excellent hunting opportunities for deer, turkey, and doves
- ±30 minute commute from downtown Greenville
- Located ±3 miles from Travelers Rest



**Rusty Hamrick**  
+1 864 230 0694  
rhamrick@naief.com

**John Etheridge**  
+1 864 908 9708  
jetheridge@naief.com

101 E Washington St  
Greenville, SC 29601  
huffcreekproperties.com

# Property Description

635 Dacusville Road, Marietta, SC 29661



The North Saluda River retreat consists of  $\pm 17.18$  acres of timber and fields stretching to the  $\pm 500'$  of river frontage. The main residence on the property, a 2,139SF one and half story brick veneer home (3BR/2.5BA) in excellent condition, is located over 100 yards off the road offering excellent privacy. The first level includes a two-car attached garage, a master bedroom (with a full bath, separate shower, and walk-in closet), and a walk-in laundry room. The den (with propane fireplace), kitchen, and breakfast room are also on the main level and overlook a spacious outdoor living area highlighted by a screened in back porch and gated in-ground pool perfect for cookouts and entertaining guests. Additional space on the first floor consists of a front porch, a dining room, a second bedroom, and a second full bathroom. A loft bedroom and half bath are located on the second story. The property grounds are well manicured with aesthetic landscaping and include an enclosed equipment shed with power perfect for storage. Hunting opportunities are available on the lower portion of the property and an adjacent  $\pm 51.4$  acre parcel is currently available for any buyers interested in acquiring more land.

**Rusty Hamrick**  
+1 864 230 0694  
rhamrick@naief.com

**John Etheridge**  
+1 864 908 9708  
jetheridge@naief.com

This material may contain content generated with AI assistance and publicly sourced data. NAI Earle Furman and Huff Creek Properties make every effort to verify the information but makes no warranties or representations regarding the accuracy, completeness, or reliability of the information. Independent verification of all details is strongly encouraged. Prices, terms, and availability are subject to change without prior notice.

The Timber and Recreational Land Division of NAI Earle Furman

# Property Photos

635 Dacusville Road, Marietta, SC 29661



**Rusty Hamrick**  
+1 864 230 0694  
rhamrick@naief.com

**John Etheridge**  
+1 864 908 9708  
jetheridge@naief.com

This material may contain content generated with AI assistance and publicly sourced data. NAI Earle Furman and Huff Creek Properties make every effort to verify the information but makes no warranties or representations regarding the accuracy, completeness, or reliability of the information. Independent verification of all details is strongly encouraged. Prices, terms, and availability are subject to change without prior notice.

The Timber and Recreational Land Division of NAI Earle Furman

# Residential Photos

635 Dacusville Road, Marietta, SC 29661



**Rusty Hamrick**  
+1 864 230 0694  
rhamrick@naief.com

**John Etheridge**  
+1 864 908 9708  
jetheridge@naief.com

This material may contain content generated with AI assistance and publicly sourced data. NAI Earle Furman and Huff Creek Properties make every effort to verify the information but makes no warranties or representations regarding the accuracy, completeness, or reliability of the information. Independent verification of all details is strongly encouraged. Prices, terms, and availability are subject to change without prior notice.

The Timber and Recreational Land Division of NAI Earle Furman

# Residential Photos

635 Dacusville Road, Marietta, SC 29661



**Rusty Hamrick**  
+1 864 230 0694  
rhamrick@naief.com

**John Etheridge**  
+1 864 908 9708  
jetheridge@naief.com

This material may contain content generated with AI assistance and publicly sourced data. NAI Earle Furman and Huff Creek Properties make every effort to verify the information but makes no warranties or representations regarding the accuracy, completeness, or reliability of the information. Independent verification of all details is strongly encouraged. Prices, terms, and availability are subject to change without prior notice.

The Timber and Recreational Land Division of NAI Earle Furman

# Residential Photos

635 Dacusville Road, Marietta, SC 29661



**Rusty Hamrick**  
+1 864 230 0694  
rhamrick@naief.com

**John Etheridge**  
+1 864 908 9708  
jetheridge@naief.com

This material may contain content generated with AI assistance and publicly sourced data. NAI Earle Furman and Huff Creek Properties make every effort to verify the information but makes no warranties or representations regarding the accuracy, completeness, or reliability of the information. Independent verification of all details is strongly encouraged. Prices, terms, and availability are subject to change without prior notice.

The Timber and Recreational Land Division of NAI Earle Furman

# Residential Photos

635 Dacusville Road, Marietta, SC 29661



**Rusty Hamrick**  
+1 864 230 0694  
rhamrick@naief.com

**John Etheridge**  
+1 864 908 9708  
jetheridge@naief.com

This material may contain content generated with AI assistance and publicly sourced data. NAI Earle Furman and Huff Creek Properties make every effort to verify the information but makes no warranties or representations regarding the accuracy, completeness, or reliability of the information. Independent verification of all details is strongly encouraged. Prices, terms, and availability are subject to change without prior notice.

The Timber and Recreational Land Division of NAI Earle Furman

# Residential Photos

635 Dacusville Road, Marietta, SC 29661



**Rusty Hamrick**  
+1 864 230 0694  
rhamrick@naief.com

**John Etheridge**  
+1 864 908 9708  
jetheridge@naief.com

This material may contain content generated with AI assistance and publicly sourced data. NAI Earle Furman and Huff Creek Properties make every effort to verify the information but makes no warranties or representations regarding the accuracy, completeness, or reliability of the information. Independent verification of all details is strongly encouraged. Prices, terms, and availability are subject to change without prior notice.

The Timber and Recreational Land Division of NAI Earle Furman

# Map Set

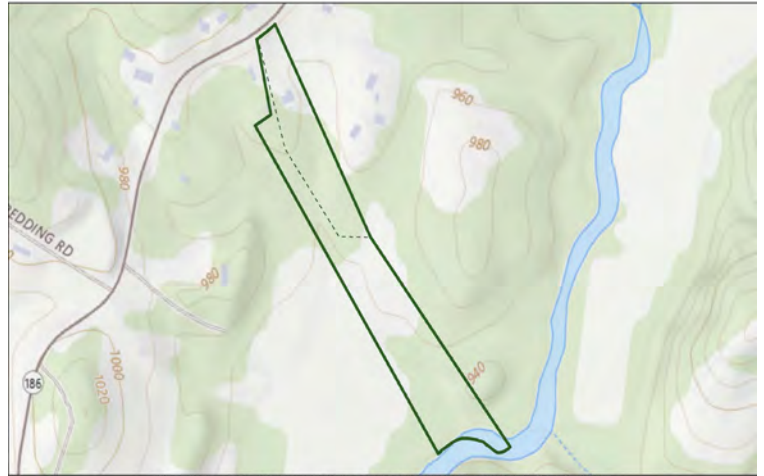
635 Dacusville Road, Marietta, SC 29661

2020 Infrared



17.18 ± Acres  
Dacusville Rd., Marietta, SC 29661

Topographical Map



17.18 ± Acres  
Dacusville Rd., Marietta, SC 29661

Topographical Map



17.18 ± Acres  
Dacusville Rd., Marietta, SC 29661

Flood Zones



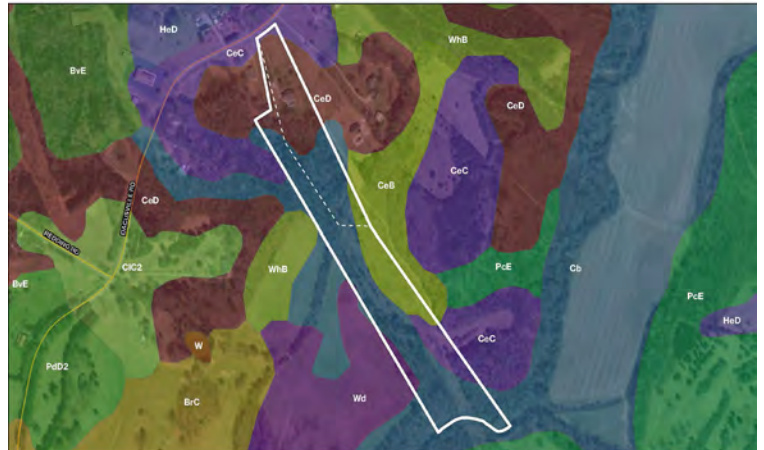
17.18 ± Acres  
Dacusville Rd., Marietta, SC 29661

National Wetlands Inventory



17.18 ± Acres  
Dacusville Rd., Marietta, SC 29661

Soil Survey



17.18 ± Acres  
Dacusville Rd., Marietta, SC 29661

**Rusty Hamrick**  
+1 864 230 0694  
rhamrick@naief.com

**John Etheridge**  
+1 864 908 9708  
jetheridge@naief.com

This material may contain content generated with AI assistance and publicly sourced data. NAI Earle Furman and Huff Creek Properties make every effort to verify the information but makes no warranties or representations regarding the accuracy, completeness, or reliability of the information. Independent verification of all details is strongly encouraged. Prices, terms, and availability are subject to change without prior notice.

The Timber and Recreational Land Division of NAI Earle Furman