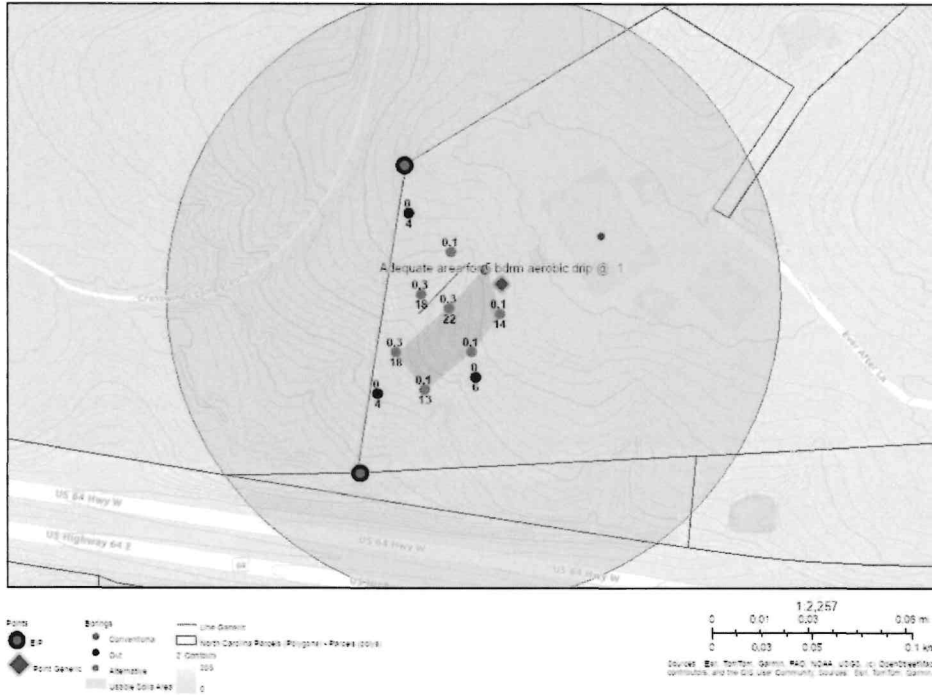




310 Ever After Ln Soil Evaluation Report

Area of Interest (AOI) Information

Nov 24 2025 15:41:24 Atlantic Standard Time



An area was identified that has adequate space and soil for a 5BR Pretreated Subsurface Drip system. The system type and exact location would need to be confirmed with a field layout/design. Client will need to confirm there are no restrictions, easements, right of ways or other encumbrances on the property that would limit the use of the area shown on the report.



Summary

Name	Count	Area(ft ²)	Length(ft)
Borings	11	N/A	N/A
Points	3	N/A	N/A
System Description	0	N/A	N/A

Borings

#	Boring Type	H1_Depth	H1_Mineral	H1_Moist_C	H1_Plastic	H1_Stickin	H1_Structu	H1_Texture
1	Alternative	6	Slightly Expansive	Loose	Non Plastic	Non Sticky	Gr	Sandy Loam
2	Alternative	22	Slightly Expansive	Loose	Non Plastic	Non Sticky	Gr	Sandy Loam
3	Alternative	6	Slightly Expansive	Loose	Non Plastic	Non Sticky	Gr	Sandy Loam
4	Alternative	4	Slightly Expansive	Loose	Non Plastic	Non Sticky	Gr	Sandy Loam
5	Alternative	18	Slightly Expansive	Loose	Non Plastic	Non Sticky	Gr	Sandy Loam
6	Alternative	18	Slightly Expansive	Loose	Non Plastic	Non Sticky	Gr	Sandy Loam
7	Alternative	13	Slightly Expansive	Loose	Non Plastic	Non Sticky	Gr	Sandy Loam
8	Conventional	18	Slightly Expansive	Loose	Non Plastic	Non Sticky	Gr	Sandy Loam
9	Out	N/A	N/A	N/A	N/A	N/A	N/A	N/A
10	Out	4	Slightly Expansive	Loose	Non Plastic	Non Sticky	Gr	Sandy Loam
11	Out	6	Slightly Expansive	Loose	Non Plastic	Non Sticky	Gr	Sandy Loam

#	H2_Depth	H2_Mineral	H2_Moist_C	H2_Plastic	H2_Stickin	H2_Structu	H2_Texture	H3_Depth
1	14.00	Slightly Expansive	Friable	Plastic	Sticky	SBK	SC Loam	N/A
2	N/A	N/A	N/A	N/A	N/A	N/A	N/A	N/A
3	14.00	Slightly Expansive	Friable	Plastic	Sticky	SBK	SC Loam	N/A
4	13.00	Slightly Expansive	Friable	Plastic	Sticky	SBK	SC Loam	N/A
5	N/A	N/A	N/A	N/A	N/A	N/A	N/A	N/A
6	N/A	N/A	N/A	N/A	N/A	N/A	N/A	N/A
7	N/A	N/A	N/A	N/A	N/A	N/A	N/A	N/A
8	28.00	Slightly Expansive	Friable	Plastic	Sticky	SBK	SC Loam	N/A
9	N/A	N/A	N/A	N/A	N/A	N/A	N/A	N/A
10	N/A	N/A	N/A	N/A	N/A	N/A	N/A	N/A
11	N/A	N/A	N/A	N/A	N/A	N/A	N/A	N/A

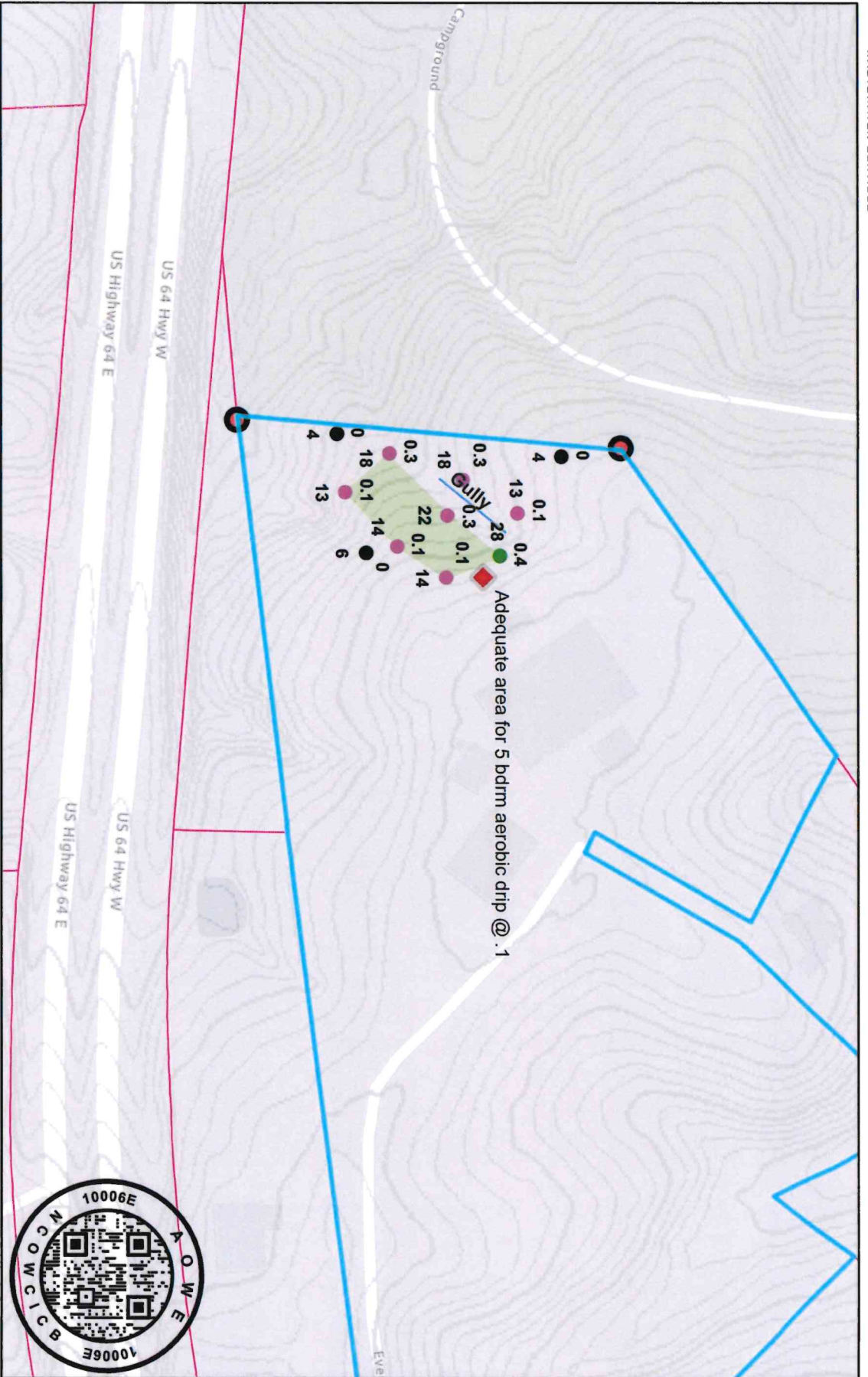
#	H3_Mineral	H3_Moist_C	H3_Plastic	H3_Stickin	H3_Structu	H3_Texture	Landscape_	LTAR
1	N/A	N/A	N/A	N/A	N/A	N/A	Linear	0.10
2	N/A	N/A	N/A	N/A	N/A	N/A	Linear	0.30
3	N/A	N/A	N/A	N/A	N/A	N/A	Linear	0.10
4	N/A	N/A	N/A	N/A	N/A	N/A	Linear	0.10
5	N/A	N/A	N/A	N/A	N/A	N/A	Linear	0.30
6	N/A	N/A	N/A	N/A	N/A	N/A	Linear	0.30
7	N/A	N/A	N/A	N/A	N/A	N/A	Linear	0.10
8	N/A	N/A	N/A	N/A	N/A	N/A	Linear	0.40
9	N/A	N/A	N/A	N/A	N/A	N/A	Linear	0.00
10	N/A	N/A	N/A	N/A	N/A	N/A	Linear	0.00
11	N/A	N/A	N/A	N/A	N/A	N/A	Linear	0.00

#	Notes	Saprolite	Slope	Soil_Wetne	Usable_Dep	Count
1	N/A	N/A	8-12%	14	14	1
2	N/A	N/A	8-12%	22	22	1
3	Exp @14	N/A	8-12%	N/A	14	1
4	Exp @13	N/A	8-12%	N/A	13	1
5	N/A	N/A	8-12%	18	18	1
6	N/A	N/A	8-12%	18	18	1
7	Exp @13	N/A	8-12%	13	13	1
8	N/A	N/A	8-12%	28	28	1
9	Exp @4	N/A	8-12%	N/A	4	1
10	Exp @4	N/A	8-12%	N/A	4	1
11	Exp @6	N/A	8-12%	N/A	6	1

Points

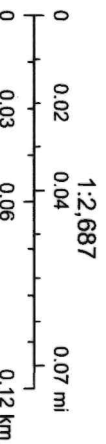
#	Point_Desc	Point_Type	Count
1	N/A	EIP	2
2	Adequate area for 5 bdrm aerobic drip @ .1	Point Generic	1

310 Ever After Ln. 2025



11/24/2025

- Points**
- EIP
- Borings
- Conventional
- Out
- Alternative
- ◆ Point Generic
- Usable Soils Area
- Line Generic
- North Carolina Parcels (Polygons) - Parcels (poly/s)
- 2' Contours
- 255
- 0



Sources: Esri, TomTom, Garmin, FAO, NOAA, USGS, (c) OpenStreetMap contributors, and the GIS User Community; Sources: Esri, TomTom, Garmin.