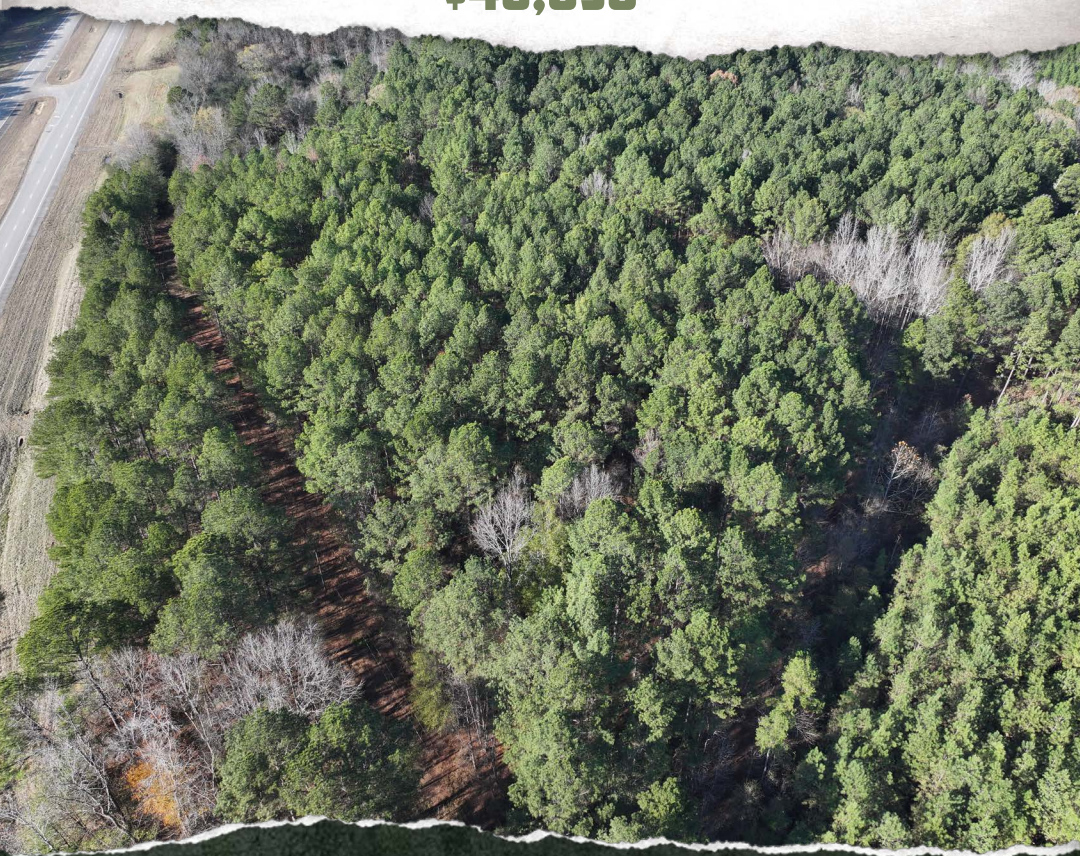




SMALLTOWN

HUNTING PROPERTIES
& REAL ESTATESM

6.14± ACRES
PICKENS COUNTY, AL
\$46,050



OFFICE (662) 338-2027 | WWW.SMALLTOWNPROPERTIES.COM

THE PICKENS 6.14

PROPERTY PROFILE

LOCATION:

- US-82
Ethelsville, AL 35461
- Pickens County
- 20± Miles SE of Columbus, MS
- 43± Miles NW of Tuscaloosa
- 45± Miles E of Starkville, MS
- 102± Miles W of Birmingham

COORDINATES:

- 33.4497, -88.2112

PROPERTY USE:

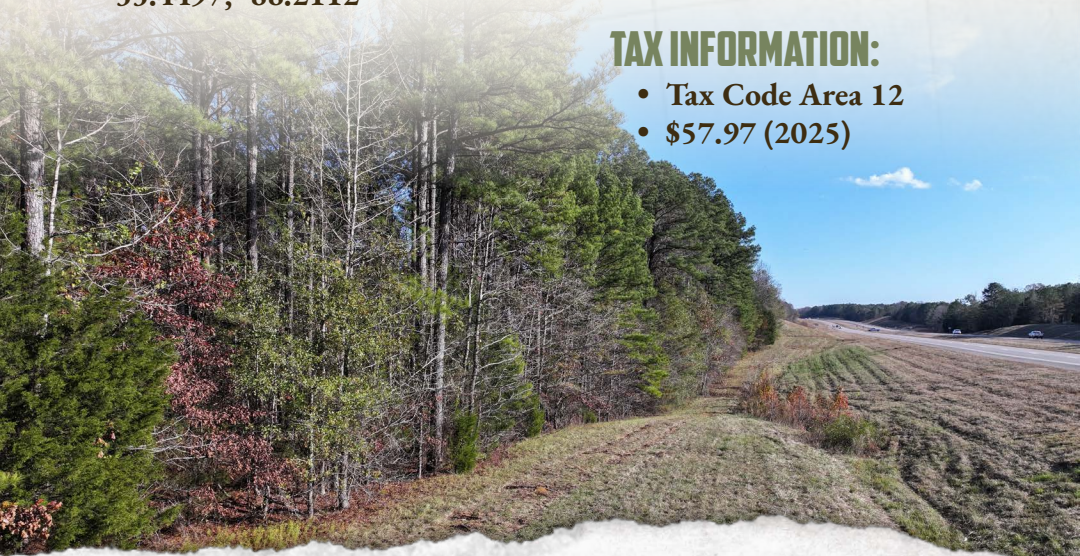
- Potential Home/Cabin Site
- Recreational

PROPERTY INFORMATION:

- 6.14± Acres
- Mature Timber
- Mostly Flat Terrain
- US-82 Frontage

TAX INFORMATION:

- Tax Code Area 12
- \$57.97 (2025)



SMALLTOWN
HUNTING PROPERTIES
& REAL ESTATESM

JACOB HANSON

LAND SPECIALIST

C: 662-386-3814

O: 662-338-2027

jacob@smalltownproperties.com

501 Hwy 12 W, Ste 150B - Starkville, MS 39759

smalltownproperties.com

Information is believed to be accurate but not guaranteed.

WELCOME TO THE PICKENS 6.14

WELCOME TO THE PICKENS 6.14. This beautiful 6.14± acre wooded property in Ethelsville, Alabama, offers the perfect blend of country Pickens County seclusion and everyday convenience. With excellent road frontage on US-82, the land provides easy access while still giving you the peaceful privacy of a rural setting.

The Pickens 6.14 features mature timber and mostly flat terrain, making it an ideal place for a custom home, a weekend cabin, or a quiet recreational retreat. Its location keeps you close to Columbus, Mississippi, for shopping, dining, and work, yet far enough away to enjoy the calm and quiet of the countryside.

The Pickens 6.14 is a wonderful opportunity to create your own space surrounded by nature in a desirable rural area.

Contact Jacob Hanson today to schedule a private showing and experience #TheSmallTownWay.



SMALLTOWN
HUNTING PROPERTIES
& REAL ESTATESM

JACOB HANSON

LAND SPECIALIST

C: 662-386-3814

O: 662-338-2027

jacob@smalltownproperties.com

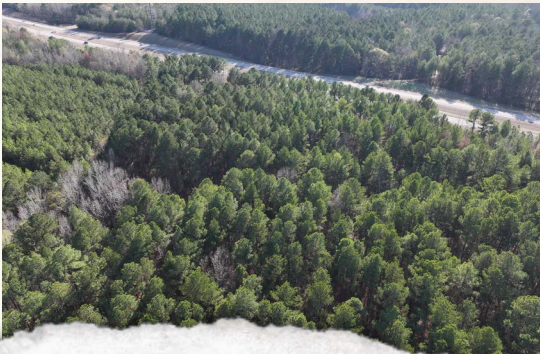
501 Hwy 12 W, Ste 150B - Starkville, MS 39759

smalltownproperties.com

Information is believed to be accurate but not guaranteed.

6.14± ACRES

PICKENS COUNTY, ALABAMA



SMALLTOWN
HUNTING PROPERTIES
& REAL ESTATESM

JACOB HANSON

LAND SPECIALIST

C: 662-386-3814

O: 662-338-2027

jacob@smalltownproperties.com

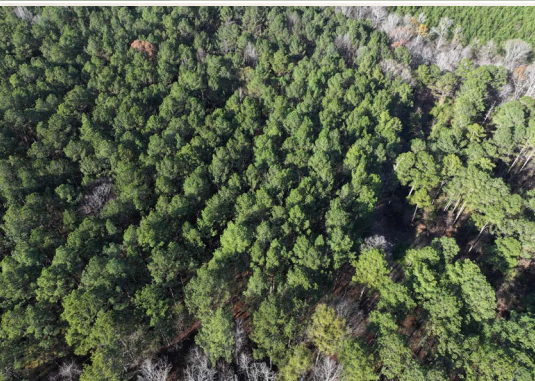
501 Hwy 12 W, Ste 150B - Starkville, MS 39759

smalltownproperties.com

Information is believed to be accurate but not guaranteed.

6.14± ACRES

PICKENS COUNTY, ALABAMA



SMALLTOWN
HUNTING PROPERTIES
& REAL ESTATESM

JACOB HANSON

LAND SPECIALIST

C: 662-386-3814

O: 662-338-2027

jacob@smalltownproperties.com

501 Hwy 12 W, Ste 150B - Starkville, MS 39759

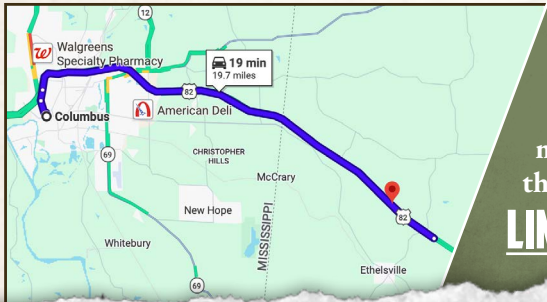
smalltownproperties.com

Information is believed to be accurate but not guaranteed.

6.14± ACRES

PICKENS COUNTY, ALABAMA

land id. LINK



Directions From Columbus, MS:
Travel on MS-50 W/MS-69 N for 0.5 miles and merge onto US-82 E to Tuscaloosa. Continue on US-82 E for 16.6 miles, entering Alabama, and then make a U-turn and travel for 2 miles to the destination on the right.

[LINK TO GOOGLE MAP DIRECTIONS](#)



SMALLTOWN
HUNTING PROPERTIES
& REAL ESTATESM

JACOB HANSON

LAND SPECIALIST

C: 662-386-3814

O: 662-338-2027

jacob@smalltownproperties.com

501 Hwy 12 W, Ste 150B - Starkville, MS 39759

smalltownproperties.com

Information is believed to be accurate but not guaranteed.