

208± ACRES
UNION COUNTY, MS
\$622,960



SMALLTOWN
HUNTING PROPERTIES
& REAL ESTATE™

OFFICE (769) 888-2522 | WWW.SMALLTOWNPROPERTIES.COM

THE UNION 208

PROPERTY PROFILE

LOCATION:

- MS-9 N
Blue Springs, MS 38828
- Union County
- 19± Miles NW of Tupelo

COORDINATES:

- 34.4125, -88.8655

PROPERTY USE:

- Hunting
- Recreational
- Investment
- Potential Home/Cabin Site

PROPERTY INFORMATION:

- 208± Acres
- Mixed Timber
- Deer & Turkey
- Established Food Plots
- Road Frontage
- Internal Road System
- Utilities Available Nearby

TAX INFORMATION:

- Parcel #1: 092R-03-008.00
- \$591.56 (2025)



MICHAEL OSWALT, ALC | PRINCIPAL BROKER
C: 662-719-3967 | michael@smalltownproperties.com

HARRISON EATON | LAND SPECIALIST
C: 662-401-9472 | harrison@smalltownproperties.com

4848 Main St. - Flora, MS 39071 | O: 769-888-2522

smalltownproperties.com

50 CR 401 - Oxford, MS 38655 | O: 662-238-4077

Information is believed to be accurate but not guaranteed.

WELCOME TO THE UNION 208

THIS 208± ACRE TRACT LOCATED ON MS-9 N IN THE BLUE SPRINGS AREA OF UNION COUNTY, MISSISSIPPI, OFFERS A GREAT COMBINATION OF RECREATIONAL USE AND TIMBER INVESTMENT POTENTIAL. The Union 208 features a healthy mix of hardwoods and pines, providing both natural beauty and long-term value.

Established food plots and abundant deer and turkey populations make the Union 208 an excellent hunting property. With convenient MS-9 N road frontage and an internal road system, the land is easily accessible and well laid out for navigating the entire tract.

The Union 208 is ideal for outdoor enthusiasts, investors, or anyone looking for a versatile piece of land, offering homesite potential with utilities provided by New Albany Light, Gas, and Water.

Contact Michael Oswalt or Harrison Eaton today to schedule a private showing and experience #TheSmallTownWay.



SMALLTOWN
HUNTING PROPERTIES
& REAL ESTATE™



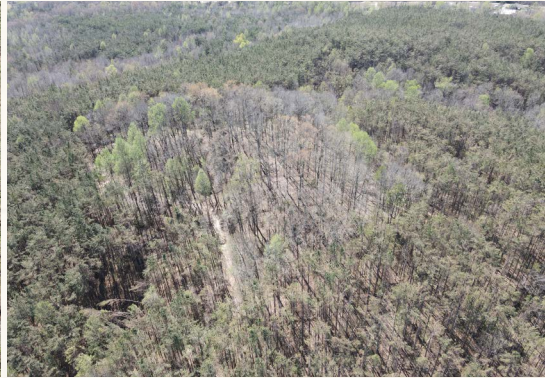
MICHAEL OSWALT, ALC | PRINCIPAL BROKER
C: 662-719-3967 | michael@smalltownproperties.com

HARRISON EATON | LAND SPECIALIST
C: 662-401-9472 | harrison@smalltownproperties.com

4848 Main St. - Flora, MS 39071 | O: 769-888-2522 smalltownproperties.com 50 CR 401 - Oxford, MS 38655 | O: 662-238-4077

208± ACRES

UNION COUNTY, MISSISSIPPI



MICHAEL OSWALT, ALC | PRINCIPAL BROKER
C: 662-719-3967 | michael@smalltownproperties.com

HARRISON EATON | LAND SPECIALIST
C: 662-401-9472 | harrison@smalltownproperties.com

4848 Main St. - Flora, MS 39071 | O: 769-888-2522

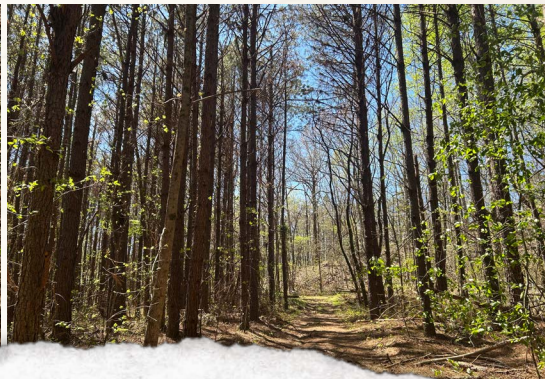
smalltownproperties.com

50 CR 401 - Oxford, MS 38655 | O: 662-238-4077

Information is believed to be accurate but not guaranteed.

208± ACRES

UNION COUNTY, MISSISSIPPI



MICHAEL OSWALT, ALC | PRINCIPAL BROKER
C: 662-719-3967 | michael@smalltownproperties.com

HARRISON EATON | LAND SPECIALIST
C: 662-401-9472 | harrison@smalltownproperties.com

Information is believed to be accurate but not guaranteed.

4848 Main St. - Flora, MS 39071 | O: 769-888-2522

smalltownproperties.com

50 CR 401 - Oxford, MS 38655 | O: 662-238-4077



MICHAEL OSWALT, ALC | PRINCIPAL BROKER
C: 662-719-3967 | michael@smalltownproperties.com

HARRISON EATON | LAND SPECIALIST
C: 662-401-9472 | harrison@smalltownproperties.com

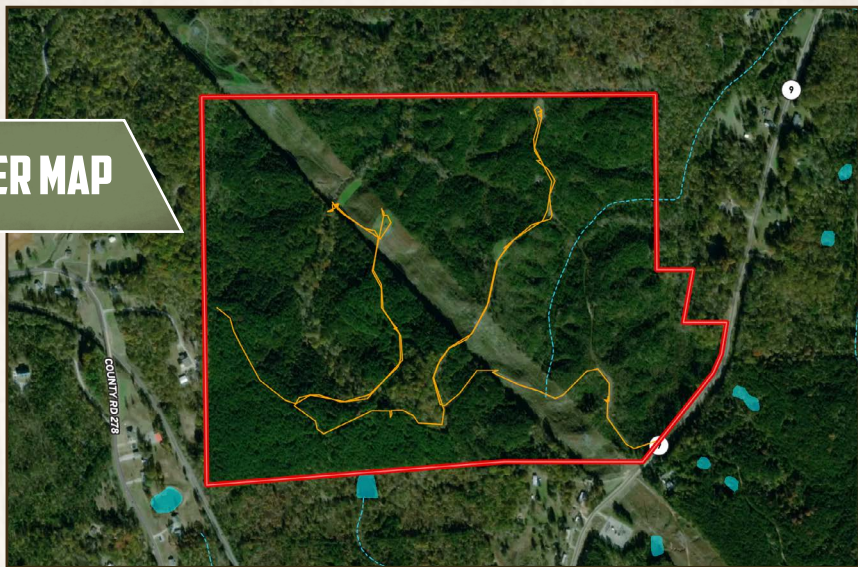
Information is believed to be accurate but not guaranteed.



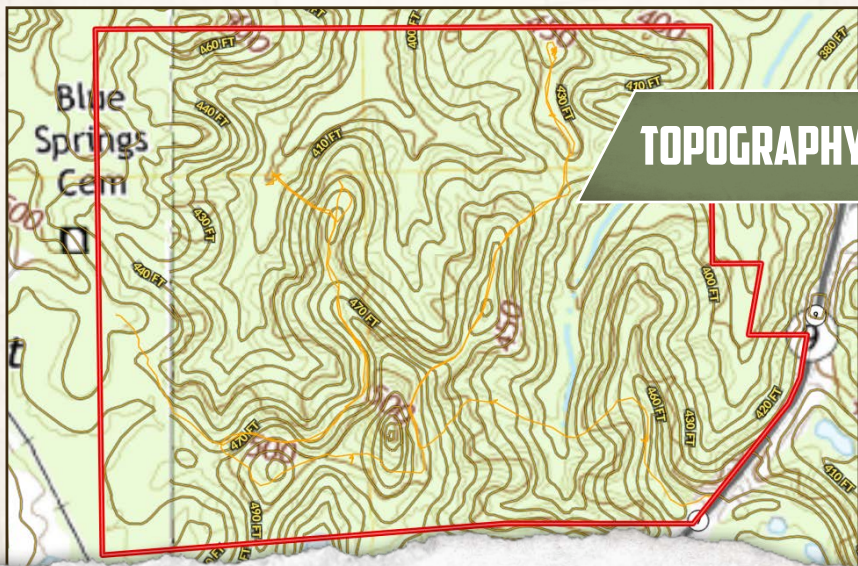
MICHAEL OSWALT, ALC | PRINCIPAL BROKER
 C: 662-719-3967 | michael@smalltownproperties.com

HARRISON EATON | LAND SPECIALIST
 C: 662-401-9472 | harrison@smalltownproperties.com

WATER MAP



TOPOGRAPHY MAP



SMALLTOWN
HUNTING PROPERTIES
& REAL ESTATE™



MICHAEL OSWALT, ALC | PRINCIPAL BROKER
C: 662-719-3967 | michael@smalltownproperties.com

HARRISON EATON | LAND SPECIALIST
C: 662-401-9472 | harrison@smalltownproperties.com

4848 Main St. - Flora, MS 39071 | O: 769-888-2522

smalltownproperties.com

50 CR 401 - Oxford, MS 38655 | O: 662-238-4077

Information is believed to be accurate but not guaranteed.



SOIL MAP

SOIL CODE	SOIL DESCRIPTION	ACRES	%	CPI	NCCPI	CAP
STF	Smithdale-Sweetman association hilly	181.9 1	87.05	0	25	7e
SHF	Smithdale association, hilly	27.08	12.96	0	17	7e
TOTALS		208.9 9(*)	100%	-	23.96	7.0



MICHAEL OSWALT, ALC | PRINCIPAL BROKER
C: 662-719-3967 | michael@smalltownproperties.com

HARRISON EATON | LAND SPECIALIST
C: 662-401-9472 | harrison@smalltownproperties.com

Information is believed to be accurate but not guaranteed.

208± ACRES

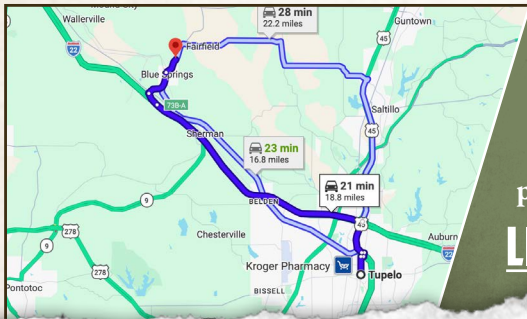
UNION COUNTY, MISSISSIPPI

land id. LINK



Directions From Tupelo, MS: Travel on US-45 for 1.7 miles. Take the exit onto I-22 towards Memphis and continue for 12.7 miles. Take exit 73B-A to merge onto MS-9 towards Blue Springs. Travel on MS-9 N for 1.6 miles, and then turn right to stay on MS-9 N. The property will be on the left in 0.8 miles.

LINK TO GOOGLE MAP DIRECTIONS



MICHAEL OSWALT, ALC | PRINCIPAL BROKER
C: 662-719-3967 | michael@smalltownproperties.com



SMALLTOWN
HUNTING PROPERTIES
& REAL ESTATE™



HARRISON EATON | LAND SPECIALIST
C: 662-401-9472 | harrison@smalltownproperties.com