

Stand 1 - 44 acres

Species	Pulp Tons	\$/ton pulp	Total \$ Pulp	Tie Tons	\$/ton ties	Total \$ Ties	Saw Doyle BF	\$/MBF	Total \$ Doyle BF
Ailanthus	24.2	\$ 2.88	\$ 69.75	-	\$ 20.66	\$ -	-		\$ -
Ash	34.9	\$ 2.88	\$ 100.56	79.2	\$ 20.66	\$ 1,636.30	1,034.6	\$ 248.00	\$ 256.57
Beech	129.5	\$ 2.88	\$ 373.06	247.1	\$ 20.66	\$ 5,105.12	19,776.3	\$ 186.00	\$ 3,678.39
Black Oak	-	\$ 2.88	\$ -	23.2	\$ 20.66	\$ 479.77	3,451.1	\$ 449.00	\$ 1,549.56
Butternut	-	\$ 2.88	\$ -	-	\$ 20.66	\$ -	1,676.5	\$ 419.00	\$ 702.47
Blackgum	7.9	\$ 2.88	\$ 22.82	-	\$ 20.66	\$ -	-		\$ -
Eastern Red Cedar	9.6	\$ 2.88	\$ 27.60	-	\$ 20.66	\$ -	-		\$ -
Elm	16.5	\$ 2.88	\$ 47.51	23.1	\$ 20.66	\$ 478.10	1,034.6	\$ 186.00	\$ 192.43
N. Red Oak		\$ 2.88	\$ -	29.0	\$ 20.66	\$ 600.14	4,282.2	\$ 449.00	\$ 1,922.70
Other Hickory	108.8	\$ 2.88	\$ 313.32	162.3	\$ 20.66	\$ 3,353.61	5,222.8	\$ 306.00	\$ 1,598.17
Persimmon	11.8	\$ 2.88	\$ 33.85	-	\$ 20.66	\$ -	-		\$ -
Red Maple	177.1	\$ 2.88	\$ 510.12	112.1	\$ 20.66	\$ 2,316.07	1,343.9	\$ 186.00	\$ 249.96
S. Red Oak	11.2	\$ 2.88	\$ 32.37	7.5	\$ 20.66	\$ 155.35	1,452.2	\$ 449.00	\$ 652.04
Sassafras	11.7	\$ 2.88	\$ 33.76	-	\$ 20.66	\$ -	-		\$ -
Scarlet Oak		\$ 2.88	\$ -	-	\$ 20.66	\$ -	4,266.2	\$ 449.00	\$ 1,915.52
Shagbark Hickory	17.8	\$ 2.88	\$ 51.38	27.1	\$ 20.66	\$ 559.43	-		\$ -
Sugar Maple	120.9	\$ 2.88	\$ 348.08	45.1	\$ 20.66	\$ 931.64	2,806.4	\$ 241.00	\$ 676.34
Sweetgum	48.1	\$ 2.88	\$ 138.42	37.0	\$ 20.66	\$ 763.80	3,259.4	\$ 186.00	\$ 606.25
Walnut	-	\$ 2.88	\$ -	18.0	\$ 20.66	\$ 371.77	-		\$ -
White Oak	40.2	\$ 2.88	\$ 115.64	71.3	\$ 20.66	\$ 1,472.62	13,412.1	\$ 482.00	\$ 6,464.63
Yellow Poplar	246.1	\$ 2.88	\$ 708.84	770.1	\$ 20.66	\$ 15,909.60	78,900.7	\$ 275.00	\$ 21,697.68
Total	1,016.3		\$ 2,927.06	1,652.1		\$ 34,133.31	141,918.9		\$ 42,162.70
Topwood	943.0	\$ 2.00	\$ 1,886.00						
\$/acre	\$ 1,843.39								

Stand 2 - 13.8									
Species	Pulp Tons	\$/ton pulp	Total \$ pulp	Tie Tons	\$/ton tie	Total \$ tie	Saw Doyle BF	\$/MBF Doyle	Total \$ Saw
Ash	-	2.88	\$ -	-	20.66	\$ -	1,243.05	\$ 248.00	\$ 308.28
Ailanthus	5.83	2.88	\$ 16.79	-	20.66	\$ -	-		\$ -
Black Cherry	24.72	2.88	\$ 71.18	-	20.66	\$ -	-		\$ -
Cottonwood	21.32	2.88	\$ 61.41	-	20.66	\$ -	-		\$ -
Elm	13.17	2.88	\$ 37.94	-	20.66	\$ -	-		\$ -
Hackberry	6.55	2.88	\$ 18.86	-	20.66	\$ -	-		\$ -
Red Maple	-	2.88	\$ -	3.26	20.66	\$ 67.29	798.12	\$ 186.00	\$ 148.45
S. Red Oak	14.29	2.88	\$ 41.15	20.41	20.66	\$ 421.62	-		\$ -
Scarlet Oak	-	2.88	\$ -	3.33	20.66	\$ 68.86	1,120.33	\$ 449.00	\$ 503.03
Sweetgum	46.21	2.88	\$ 133.08	37.91	20.66	\$ 783.27	1,185.85	\$ 186.00	\$ 220.57
Sycamore	18.08	2.88	\$ 52.06	29.91	20.66	\$ 617.86	-		\$ -
Walnut	5.80	2.88	\$ 16.70	-	20.66	\$ -	848.67	\$ 419.00	\$ 355.59
White Oak	7.31	2.88	\$ 21.05	-	20.66	\$ -	9,680.39	\$ 482.00	\$ 4,665.95
Yellow Poplar	96.45	2.88	\$ 277.77	41.10	20.66	\$ 849.04	-		\$ -
Total	259.72		\$ 748.00	135.91		\$ 2,807.95	14,876.41		\$ 6,201.86
Topwood	102.04	\$ 2.00	\$ 204.08						\$ 9,961.90
\$/acre	\$ 721.88								

Stand	Acres	Pulp Tons	\$ Pulp	Tie Tons	\$ Tie	Saw MBF	\$ Saw	
1	44	1,016.3	\$ 2,927.06	1,652.1	\$ 34,133.31	141,918.86	\$ 42,162.70	
2	13.8	259.7	\$ 748.00	135.9	\$ 2,807.95	14,876.41	\$ 6,201.86	
Total	57.8	1,276.1	\$ 3,675.06	1,788.1	\$ 36,941.26	156,795.26	\$ 48,364.57	\$ 88,980.89

Panther Creek Forestry

Making Your Forest Work For You

Tudor Tract

Clay Co., TN

-  Boundary
-  Stands

Map by: Panther Creek Forestry, LLC
8/21/2025



Id	Stand	Acres
1	Mixed HDWD	44
2	Edge HDWD	13.8
3	Fields	62.3
4	Ponds	3



Panther Creek Forestry

Making Your Forest Work For You

Tudor Tract

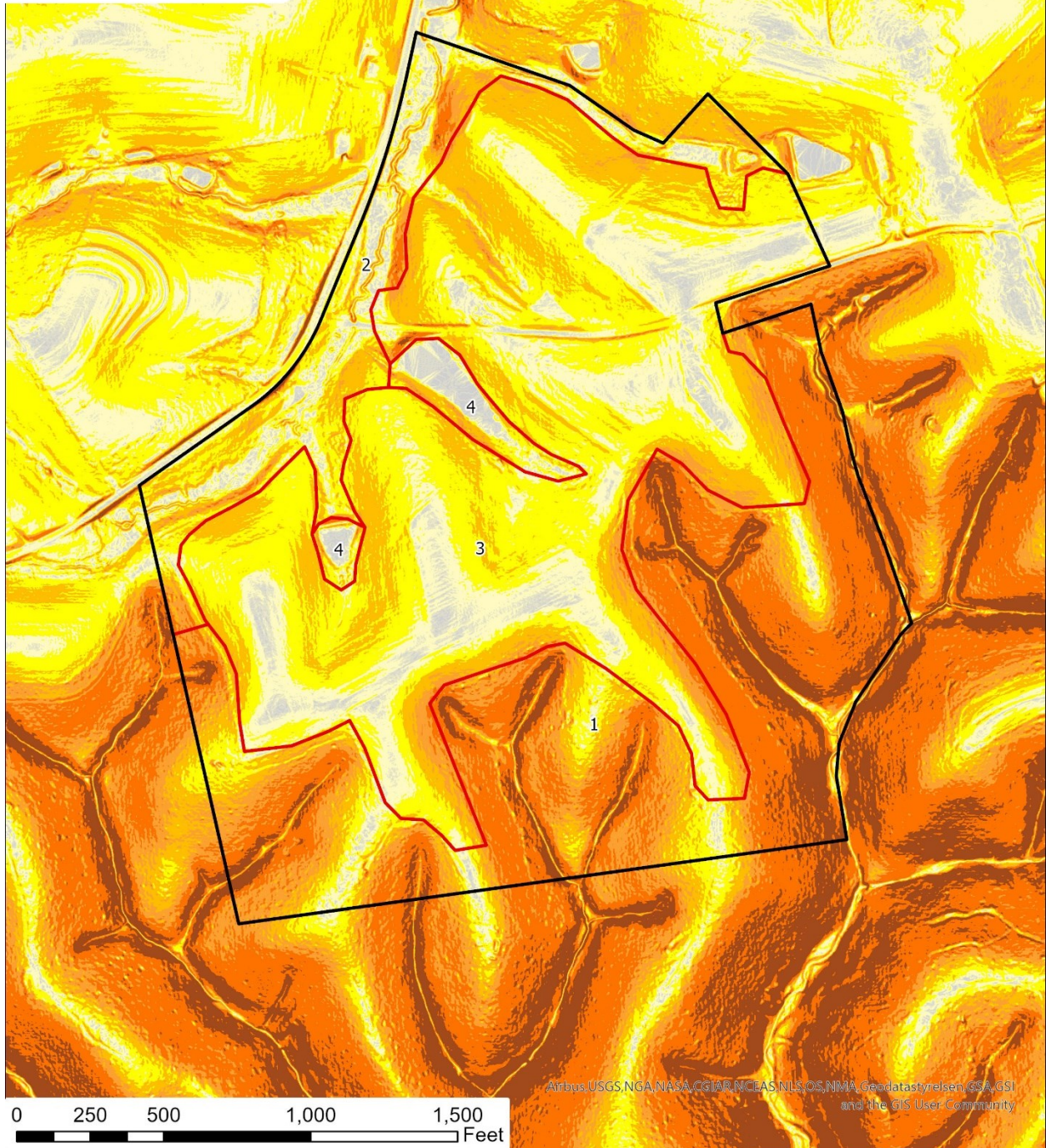
Clay Co., TN

-  Boundary
-  Stands

Map by: Panther Creek Forestry, LLC
8/21/2025



Id	Stand	Acres
1	Mixed HDWD	44
2	Edge HDWD	13.8
3	Fields	62.3
4	Ponds	3



Panther Creek Forestry

Making Your Forest Work For You

