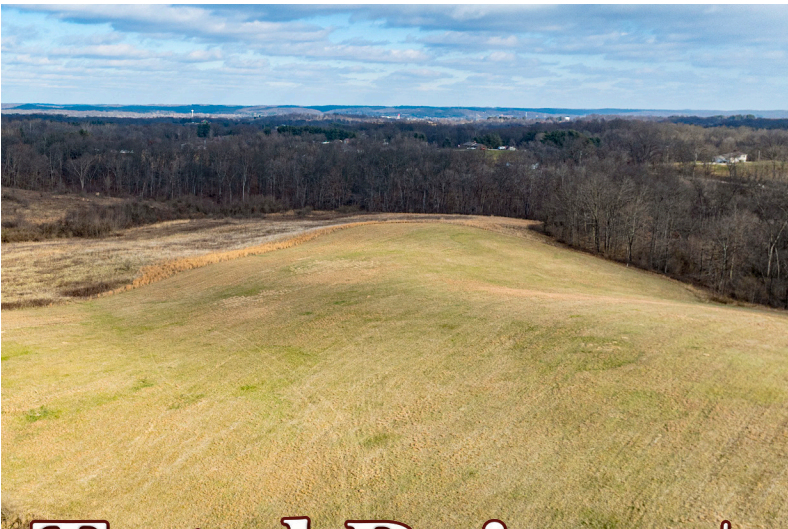
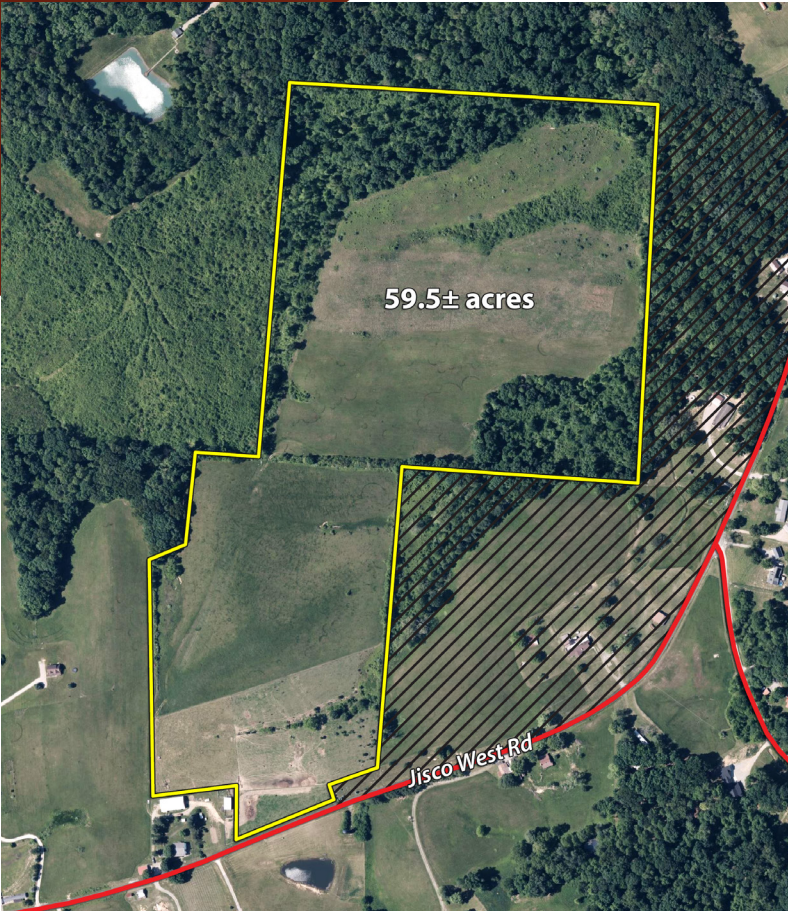


59.5± Acres

Diversified Jackson Area LAND FOR SALE

- Beautiful Settings • Potential Build Sites
- Excellent Hunting • Development Upside
- Quality Farm for Hay Production & Cattle

The Cottrill Farm offers 59.5± acres of productive and diverse land ideally suited for grazing, hay production, and recreation. Quality pasture ground with solid perimeter fencing and excellent road frontage along Jisco West Rd anchors the southern portion of the farm. Moving north, the land transitions to more secluded terrain featuring a mix of pasture, timber, and elevated topography – creating outstanding opportunities for cattle operations, potential build sites, and serious hunting. Trail camera photos tell the story on deer quality. This is a rare chance to acquire a versatile block of Jackson County land with great development upside due to its location!



Total Price: \$350,000

LISTING AGENT:

Tommy Brewster • 740.357.0325

Photos are for illustrative purposes only and are not of the auction property. The information on this sheet is subject to verification and no liability for errors or omissions is assumed by the Schrader Agency. COTTRILL - TBREW01J-OH

SCHRADER
Real Estate and Auction Company, Inc.



ONLINE BIDDING AVAILABLE

800.451.2709 • www.SchraderAuction.com

