

**Thomas County KS  
Farmland**

**Listing Price: \$611,475  
\$3,350 per acre**



**Township 8 South, Range 34 West  
S2 Section 18 Less Tracts**

**MLS # 1054585**

**LISTING # 26017K**



**Call Me Today!**

**VIRGIL GEORGE, EMPLOYING BROKER**

**VG@RXL.LAND**

Office: 719-346-5420 | Mobile: 719-349-1966

1510 Rose Avenue | Burlington, CO 80807

Licensed in Colorado &, Kansas



**Your Local Auction Time.com Representative**

**Call to List your Equipment Today!**

**[www.rockingxland.com](http://www.rockingxland.com)**

**Where a Handshake Still Means Something!**

NOTICE\* BROKER HAS GATHERED INFORMATION FROM SOURCES DEEMED RELIABLE. ALTHOUGH BROKER MAKES NO WARRANTIES EXPRESSED OR IMPLIED, BROKER SHALL BE REPRESENTING AS A TRANSACTION BROKER. **VIEW ADDITIONAL INFORMATION AND PROPERTIES AT [WWW.ROCKINGXLAND.COM](http://WWW.ROCKINGXLAND.COM).**

## Features:

**Premium Thomas County, KS**

**Cropland Opportunity**

**182.53+/- Farmland Acres**

**\*High quality income producing  
agriculture in Northwest Kansas**

**\*Available for spring planting**

**\*126.27 acres corn base, Yield 133bu**

**\*FSA designation at the time of listing**

**\*Primarily Class II soils**

**\*2025 Taxes: \$1,297.53**

Scan QR Code with mobile device



**Call Me Today!**

**VIRGIL GEORGE, EMPLOYING BROKER**

**VG@RXL.LAND**

Office: 719-346-5420 | Mobile: 719-349-1966

1510 Rose Avenue | Burlington, CO 80807

Licensed in Colorado & Kansas

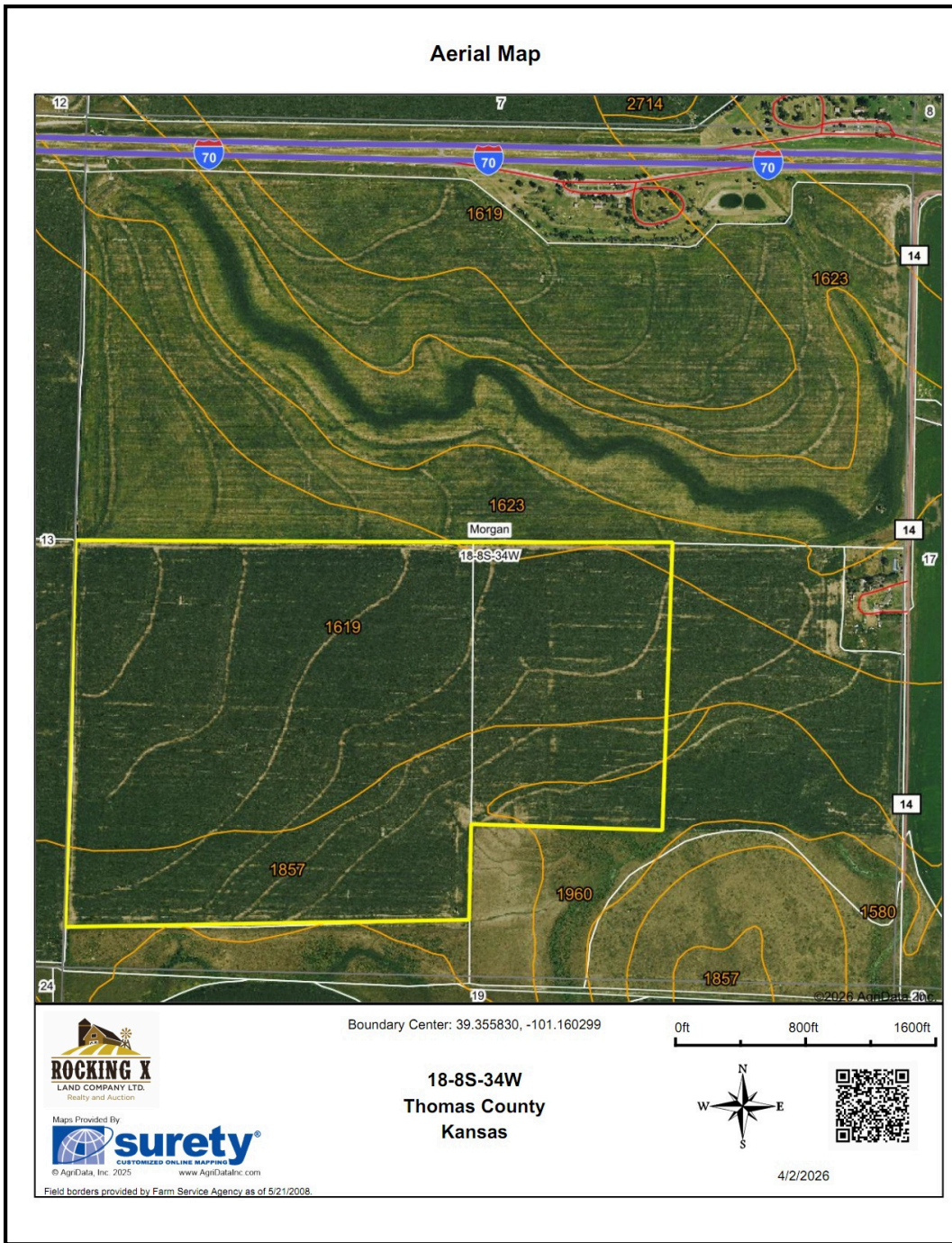


**Your Local Auction Time.com Representative**

**Call to List your Equipment Today!**

**www.rockingxland.com**

**Where a Handshake Still Means Something!**



Call Me Today!

**VIRGIL GEORGE, EMPLOYING BROKER**

**VG@RXL.LAND**

Office: 719-346.5420 | Mobile: 719-349-1966

1510 Rose Avenue | Burlington, CO 80807

**Licensed in Colorado & Kansas**

Your Local Auction Time.com Representative

Call to List your Equipment Today!

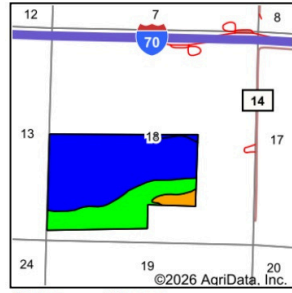
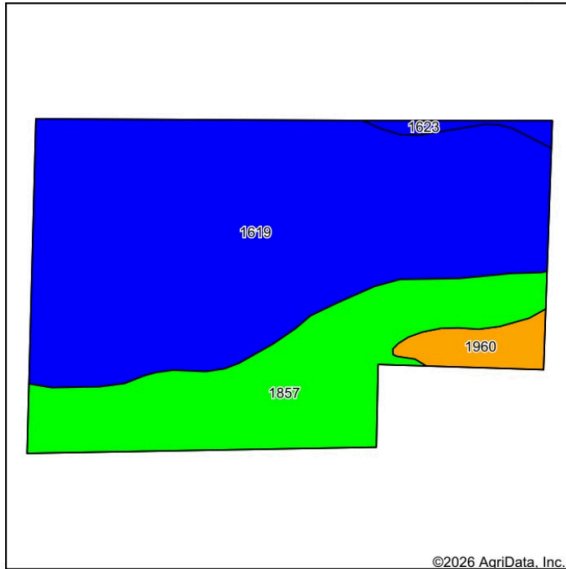


www.rockingxland.com

Where a Handshake Still Means Something!

NOTICE\* BROKER HAS GATHERED INFORMATION FROM SOURCES DEEMED RELIABLE. ALTHOUGH BROKER MAKES NO WARRANTIES EXPRESSED OR IMPLIED, BROKER SHALL BE REPRESENTING AS A TRANSACTION BROKER. **VIEW ADDITIONAL INFORMATION AND PROEPRITIES AT [WWW.ROCKINGXLAND.COM](http://WWW.ROCKINGXLAND.COM).**

### Soils Map



State: **Kansas**  
 County: **Thomas**  
 Location: **18-8S-34W**  
 Township: **Morgan**  
 Acres: **182.48**  
 Date: **4/2/2026**



Soils data provided by USDA and NRCS.

Area Symbol: KS193, Soil Area Version: 22

Code	Soil Description	Acres	Percent of field	Non-Irr Class Legend	Non-Irr Class *c	Irr Class *c	Corn Bu	Corn Irrigated Bu	Grain sorghum Bu	Grain sorghum Irrigated Bu	Winter wheat Bu	Winter wheat Irrigated Bu
1619	Keith silt loam, 0 to 1 percent slopes	124.12	68.0%		Ilc	Iw	52	171	38	109	38	67
1857	Ulysses silt loam, 1 to 3 percent slopes	49.25	27.0%		IIIe	Ile			23		99	20
1960	Buffalo Park silt loam, 3 to 6 percent slopes	6.75	3.7%		IVe	Ive			6			5
1623	Keith silt loam, 1 to 3 percent slopes, south	2.36	1.3%		Ile	Ile						
<b>Weighted Average</b>					<b>2.34</b>	<b>1.39</b>	<b>35.4</b>	<b>116.3</b>	<b>32.3</b>	<b>100.9</b>	<b>31.4</b>	<b>57.7</b>

\*c: Using Capabilities Class Dominant Condition Aggregation Method

Soils data provided by USDA and NRCS.



# Call Me Today!

**VIRGIL GEORGE, EMPLOYING BROKER**  
 VG@RXL.LAND  
 Office: 719-346.5420 | Mobile: 719-349-1966  
 1510 Rose Avenue | Burlington, CO 80807  
**Licensed in Colorado & Kansas**



**Your Local Auction Time.com Representative**  
**Call to List your Equipment Today!**

[www.rockingxland.com](http://www.rockingxland.com)

**Where a Handshake Still Means Something!**

NOTICE\* BROKER HAS GATHERED INFORMATION FROM SOURCES DEEMED RELIABLE. ALTHOUGH BROKER MAKES NO WARRANTIES EXPRESSED OR IMPLIED, BROKER SHALL BE REPRESENTING AS A TRANSACTION BROKER. **VIEW ADDITIONAL INFORMATION AND PROPERTIES AT [WWW.ROCKINGXLAND.COM](http://WWW.ROCKINGXLAND.COM).**