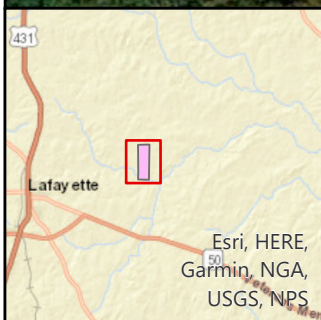


Microsoft, Vantor



Allen Creek Tract

200+- Acres Chambers County, AL
T22N R27E S9

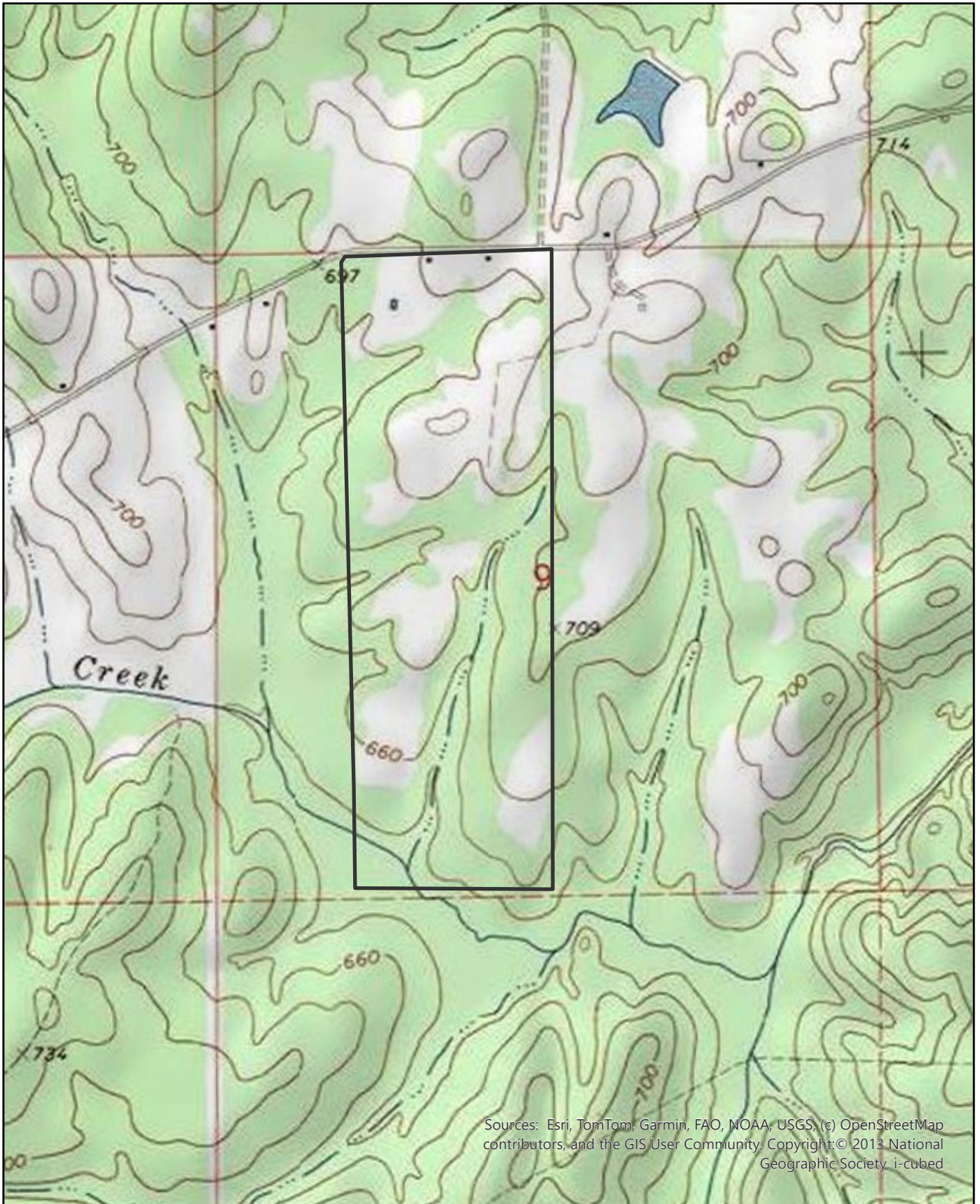
Larson &
McGowin
PROPERTIES

Coordinate System: WGS 1984 Web Mercator Auxiliary Sphere



0 0.07 0.15 Mi

0 0.15 0.3 Km



Sources: Esri, TomTom, Garmin, FAO, NOAA, USGS, (c) OpenStreetMap contributors, and the GIS User Community. Copyright: © 2013 National Geographic Society, i-cubed

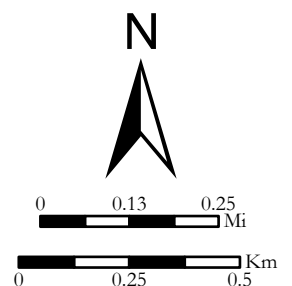


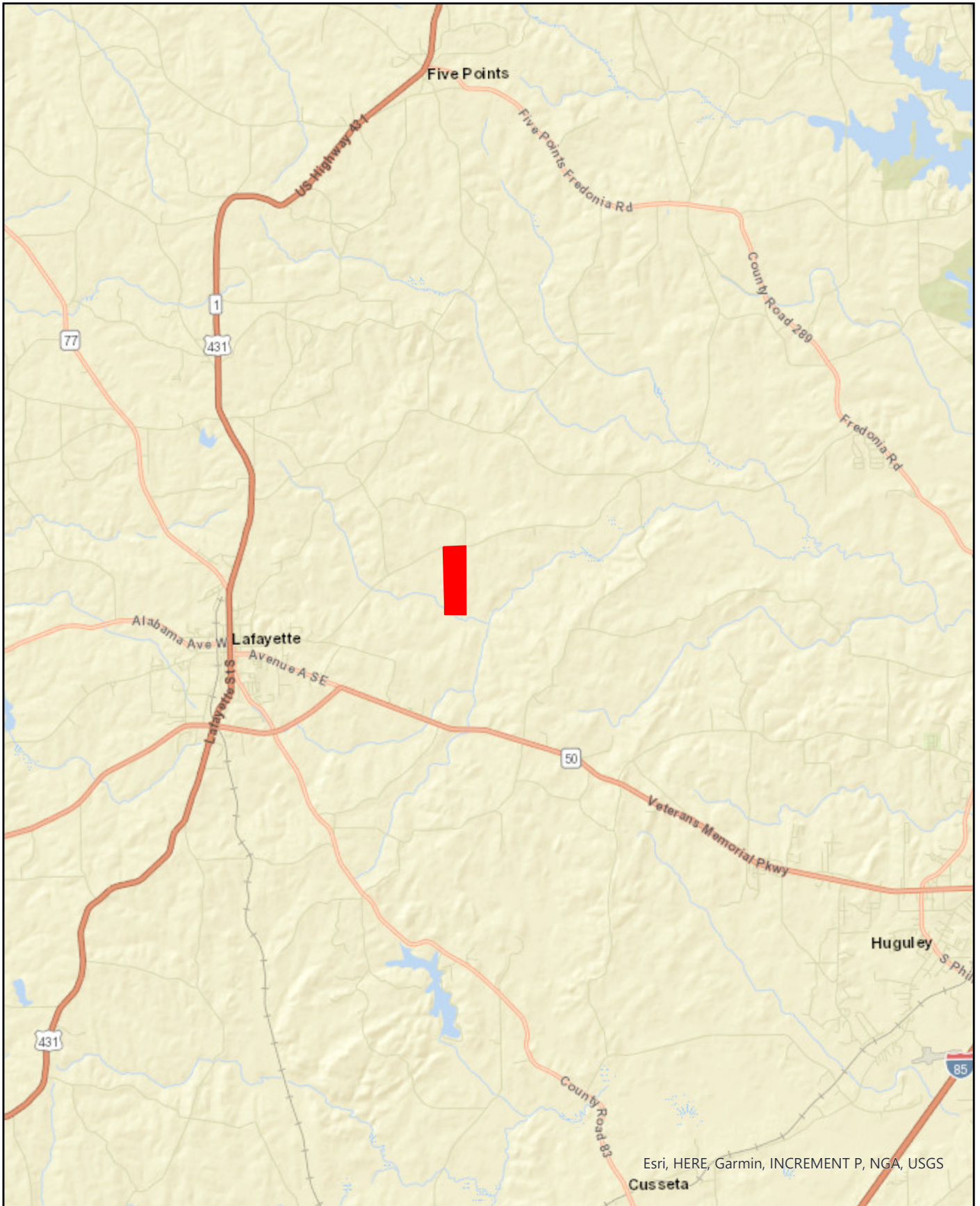
Allen Creek Tract

200+- Acres Chambers County, AL
T22N R27E S9

Larson & McGowin
PROPERTIES

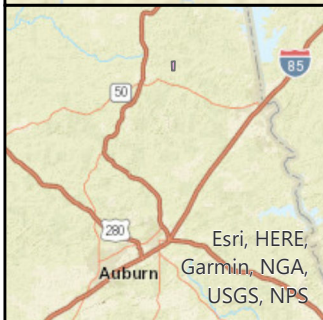
Coordinate System: WGS 1984 Web Mercator Auxiliary Sphere





Esri, HERE, Garmin, INCREMENT P, NGA, USGS

Cusseta



Esri, HERE,
Garmin, NGA,
USGS, NPS

Allen Creek Tract

200+- Acres Chambers County, AL
T22N R27E S9

Larson &
McGowin
PROPERTIES

Coordinate System: WGS 1984 Web Mercator Auxiliary Sphere



0 0.13 0.25 Mi

0 0.25 0.5 Km