

Balm Wimauma Organic Farm

16423 Sweat Loop Road, Wimauma, Florida 33547

Jerrod Parker
813-967-2862
jerrod@saundersrealestate.com

Ryan McGimsey
813-763-1004
ryanm@saundersrealestate.com

PROPERTY OVERVIEW



Lease Rate \$1,200 Acre/yr (Ground)

Offering Summary

| | |
|------------------------|--------------------|
| Total Acreage: | 220 ± Acres |
| Farmable Acres: | 108 ± Acres |
| State: | Florida |
| City: | Wimauma |
| County: | Hillsborough |
| Property Type: | Farms and Cropland |

Property Overview

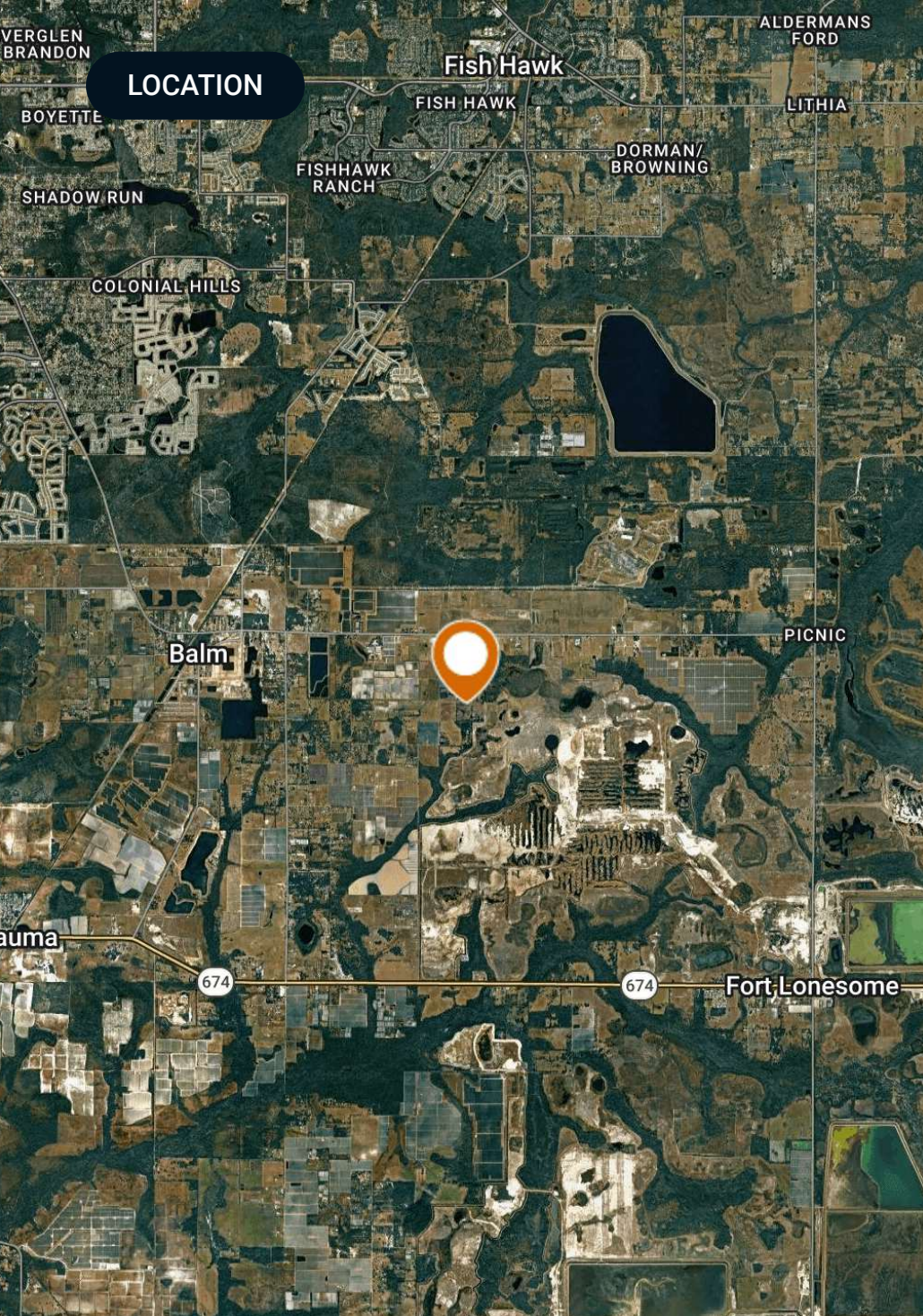
Uncover the ideal space for expanding organic strawberry production, strategically positioned for growers seeking proximity to the University of Florida IFAS Gulf Coast Research Facility. This property offers thoughtfully designed acreage tailored to accommodate agricultural ventures, with ample room for customizing layouts to support organic farming operations. The prime location provides seamless access to the research facility, offering growers the opportunity to leverage cutting-edge agricultural resources. Embrace this dynamic environment, purposefully designed to facilitate successful expansion and innovation in organic strawberry production. Elevate your agricultural business in a space that harmonizes functionality, adaptability, and strategic proximity to essential agricultural research resources.

SPECIFICATIONS & FEATURES



Specifications & Features

| | |
|--------------------------------------|---|
| Uplands / Wetlands: | 113 Upland / 107 Wetland |
| Zoning / FLU: | Agricultural |
| Water Source & Utilities: | 10" Irrigation Well |
| Current Use: | Organic Strawberry and Vegetable Production |
| Structures & Year Built: | Concrete pad with docking bay and fertigation infrastructure. |



LOCATION

Location & Driving Directions

Parcel: U-28-31-21-ZZZ-000004-47560.0

GPS: 27.758265, -82.211298

Driving Directions: Contact advisors

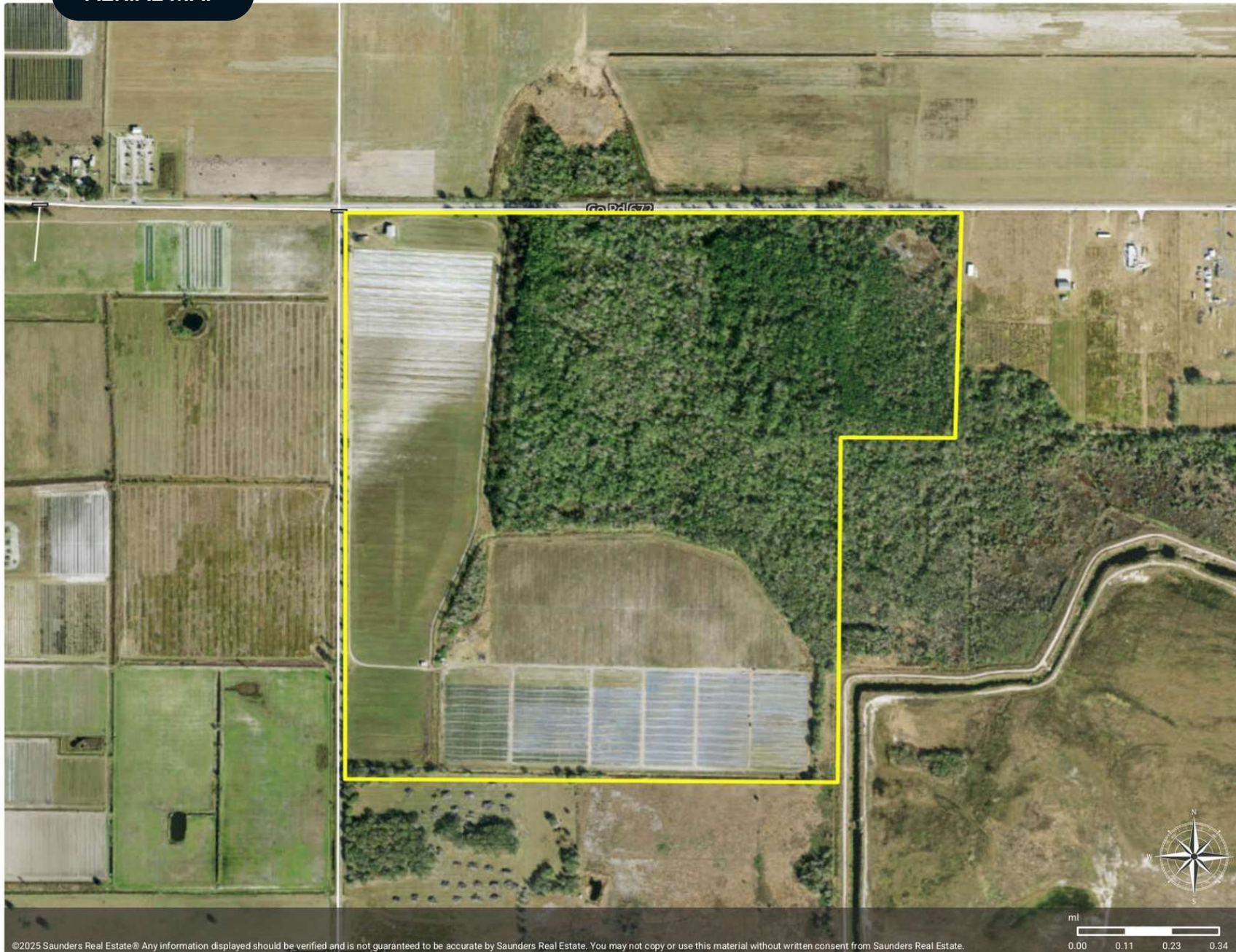
Showing Instructions: Contact advisors

AERIAL MAP

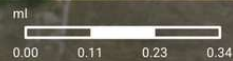


Balm Wimauma Organic Farm

- Polygon
- Census Roadways TIGER



©2025 Saunders Real Estate® Any information displayed should be verified and is not guaranteed to be accurate by Saunders Real Estate. You may not copy or use this material without written consent from Saunders Real Estate.



PROXIMITY TO IFAS

UF IFAS
UNIVERSITY of FLORIDA

672

Hillsborough County Rd 672

Sweat Loop Rd

Sweat Loop Rd



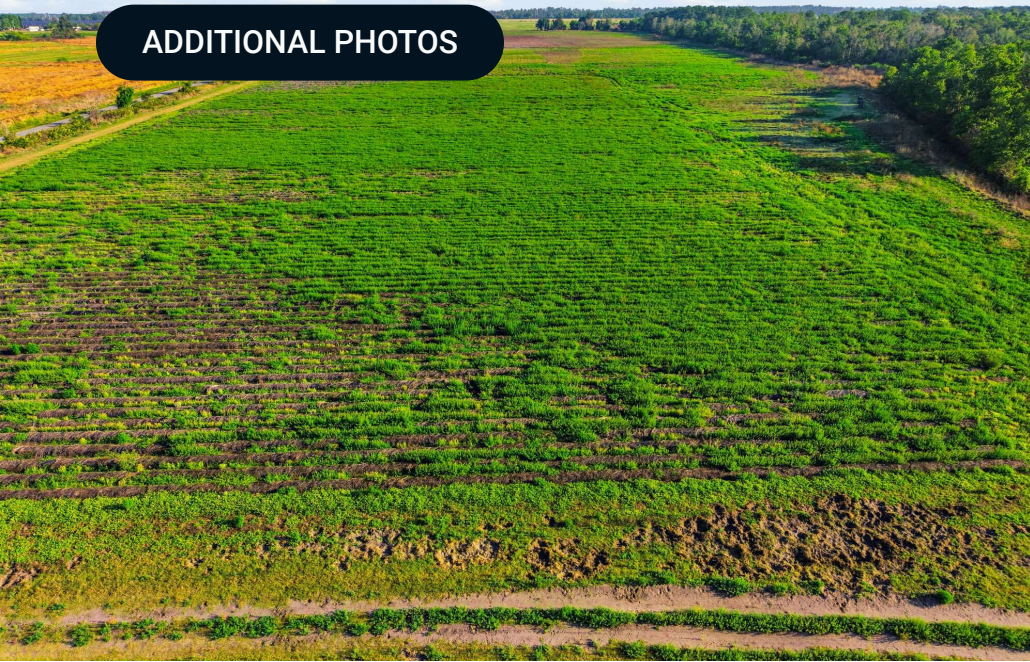
Map data ©2026 Google Imagery ©2026 Airbus,
Maxar Technologies

Google

ADDITIONAL PHOTOS



ADDITIONAL PHOTOS



ADVISOR BIOGRAPHY



Jerrod Parker

Advisor

jerrod@saundersrealestate.com

Direct: **877-518-5263 x392** | Cell: **813-967-2862**

Professional Background

Jerrod Parker is an Advisor at Saunders Real Estate, operating out of the firm's Lakeland headquarters while specializing in development land and investment properties throughout Central Florida.

A 7th-generation Floridian, Jerrod comes from a family deeply rooted in the region's agricultural and civic communities. His family is well known throughout Central Florida. Jerrod's father serves as the Director of the Florida Strawberry Growers Association, and his grandfather served on the Hillsborough County School Board for more than twenty years. Members of his immediate family are also active board members for the Florida Strawberry Festival, reflecting a long-standing connection to Florida agriculture and community leadership.

After earning his bachelor's degree from Florida Southern College, Jerrod began his professional career in Hillsborough County's public education system. He later transitioned into the agricultural industry, where he worked as a Certified Crop Advisor providing consulting services to farmers and ranchers throughout Central Florida. This experience gave him firsthand knowledge of the region's agricultural operations, land use considerations, and the economic factors shaping rural property ownership.

Today, Jerrod focuses on commercial development land, public infrastructure sites, and investment properties positioned within Central Florida's fastest-growing corridors. His work frequently involves identifying and marketing land opportunities near expanding residential communities, major transportation routes, and institutional anchors such as hospitals, schools, and municipal facilities.

With active development occurring along the Tampa-to-Orlando corridor, Jerrod works with landowners, developers, and investors to position properties for uses including medical offices, commercial projects, residential communities, and public infrastructure facilities. His background in agriculture, combined with his understanding of regional growth patterns and development entitlements, allows him to accurately evaluate both current land use and future development potential.

Living in Polk County, Jerrod remains actively engaged in the local business and development community. In his free time, he enjoys hosting dinners with family and friends, serving his local church, and outdoor activities.

Jerrod specializes in:

- Commercial Development
- Residential Development
- Transitional Development
- Farms and Cropland

ADVISOR BIOGRAPHY



Ryan McGimsey

Advisor

ryanm@saundersrealestate.com

Direct: **877-518-5263 x469** | Cell: **813-763-1004**

Professional Background

Ryan McGimsey serves as an Advisor at Saunders Real Estate. He is a Florida native who was raised in Plant City.

Prior to joining Saunders, Ryan navigated the diverse world of real estate, wearing multiple hats as an active mortgage loan originator for residential properties, while negotiating clients' needs in commercial real estate transactions. In his earlier professional life, he served as a freight broker, collaborating with companies nationwide in the intricate web of shipping and closely working with warehousing and 3PL companies.

Ryan's passion for real estate was further fostered when he embarked on a transformative project during the pandemic: purchasing and refurbishing a historic commercial building from the 1920s in Downtown Plant City.

A graduate of the University of South Florida, Ryan received his degree in Finance. Outside of work, he holds dear the moments spent with his wife and two children, whether on or off the ball field.

Ryan specializes in:

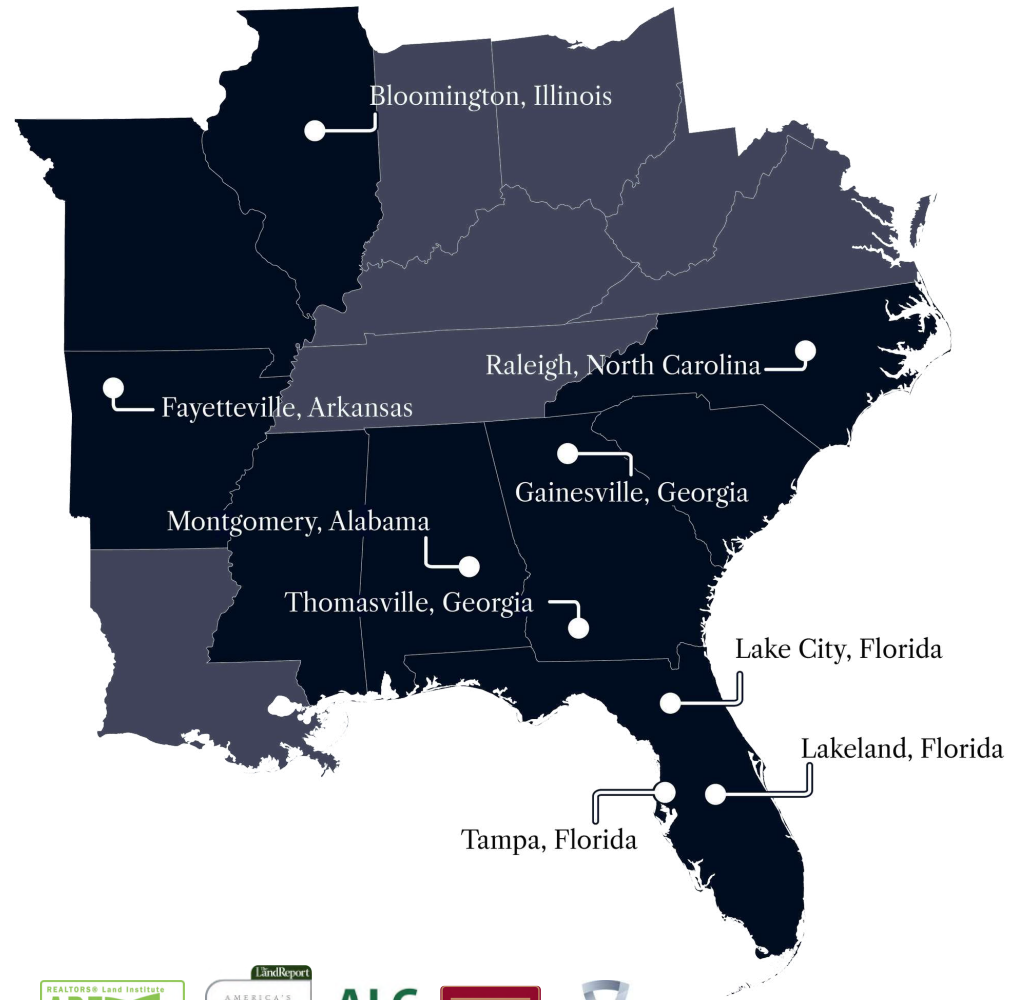
- Commercial Development
- Industrial
- Medical
- Office

Education

- Q3 CoStar Power Broker Recipient (2025)



At Saunders Real Estate, we deliver full-service real estate solutions, built on more than 30 years of trusted experience. Our dedicated teams offer tailored guidance backed by deep regional insight and a proven track record. We believe that successful outcomes start with strong relationships built on trust and a shared commitment to your goals.



877-518-5263 • info@saundersrealestate.com



©2026 Saunders Real Estate, LLC. All rights reserved. The information contained in this communication is strictly confidential. This information has been obtained from sources believed to be reliable but has not been verified. NO WARRANTY OR REPRESENTATION, EXPRESS OR IMPLIED, IS MADE AS TO THE CONDITION OF THE PROPERTY (OR PROPERTIES) REFERENCED HEREIN OR AS TO THE ACCURACY OR COMPLETENESS OF THE INFORMATION CONTAINED HEREIN, AND SAME IS SUBMITTED SUBJECT TO ERRORS, OMISSIONS, CHANGE OF PRICE, RENTAL OR OTHER CONDITIONS, WITHDRAWAL WITHOUT NOTICE, AND TO ANY SPECIAL LISTING CONDITIONS IMPOSED BY THE PROPERTY OWNER(S). ANY PROJECTIONS, OPINIONS OR ESTIMATES ARE SUBJECT TO UNCERTAINTY AND DO NOT SIGNIFY CURRENT OR FUTURE PROPERTY PERFORMANCE.