

# Lewis Timber Tracts

Sykes Town Road, Currie, North Carolina 28435

---

Kenneth Chesson  
252-809-3896  
kenneth@saundersrealestate.com

Robin Fleming  
919-215-5621  
rfleming@flemingpropinc.com

## PROPERTY OVERVIEW



### Sale Price

\$1,100,000

### Offering Summary

Acreage:	382 Acres
Price / Acre:	\$2,880
State:	North Carolina
City:	Currie
County:	Pender
Property Type:	Timberland

### Property Overview

Spanning 382 ± acres in the Currie area of Pender County, this timberland offering presents a strong opportunity for long-term investment and forest management. The property consists of two separate parcels totaling the full acreage, with one tract of 122 ± acres and a second tract of 260 ± acres, offering flexibility for acquisition, management, or future division. Stocked with approximately 12-year-old pine plantations, the land provides an established growth cycle with future income potential through thinning and harvest, making it well-suited for investors seeking a scalable and productive forestry asset.



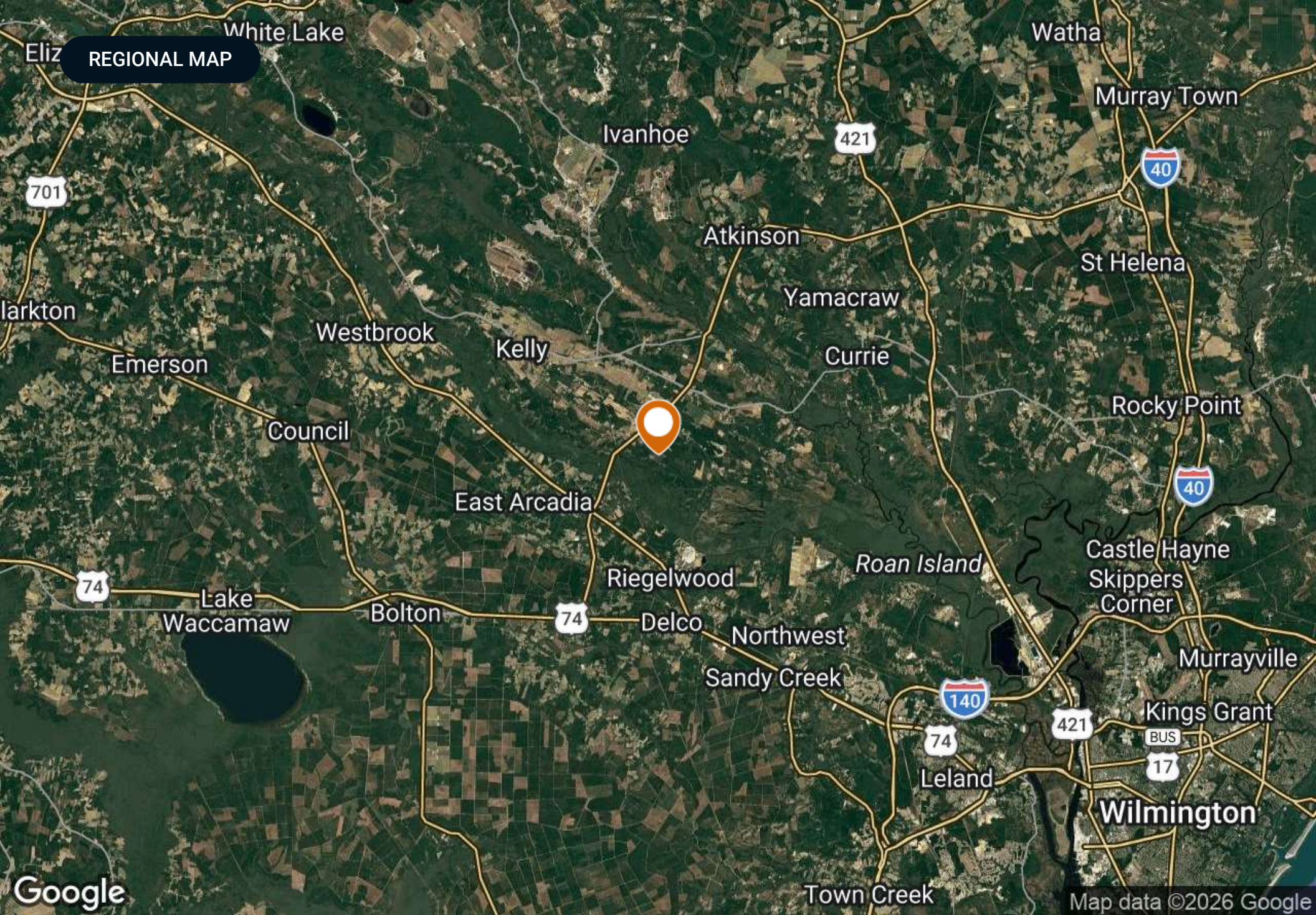
## Location Description

Currie offers a strategic vantage point for timber and land investment within Pender County's thriving forestry corridor. The area benefits from exceptional proximity to vital logistics routes, including US-421 and I-40, providing seamless access to regional mills and the Port of Wilmington. Beyond its industrial utility, the location is anchored by notable landmarks such as Moores Creek National Battlefield and the scenic Black River, known for its ancient cypress trees and recreational appeal.

Situated just minutes from the professional hubs of Burgaw and the Pender Commerce Park, this region represents a premier opportunity for long-term resource management. For the savvy investor, the area perfectly balances rural stability with rapid North Carolina growth.

## Property Highlights

- 382 ± total acres across two separate parcels
- 122 ± acre tract and 260 ± acre tract
- Located in the Currie area of Pender County
- Established ±12-year-old pine plantation
- Positioned for upcoming thinning and long-term harvest income
- Acreage supports efficient timber management
- Multiple parcels offer flexibility for phased investment or resale
- Strong candidate for sustainable forestry practices
- Scalable asset suitable for institutional or private investors
- Proven timber-producing region with consistent growth potential

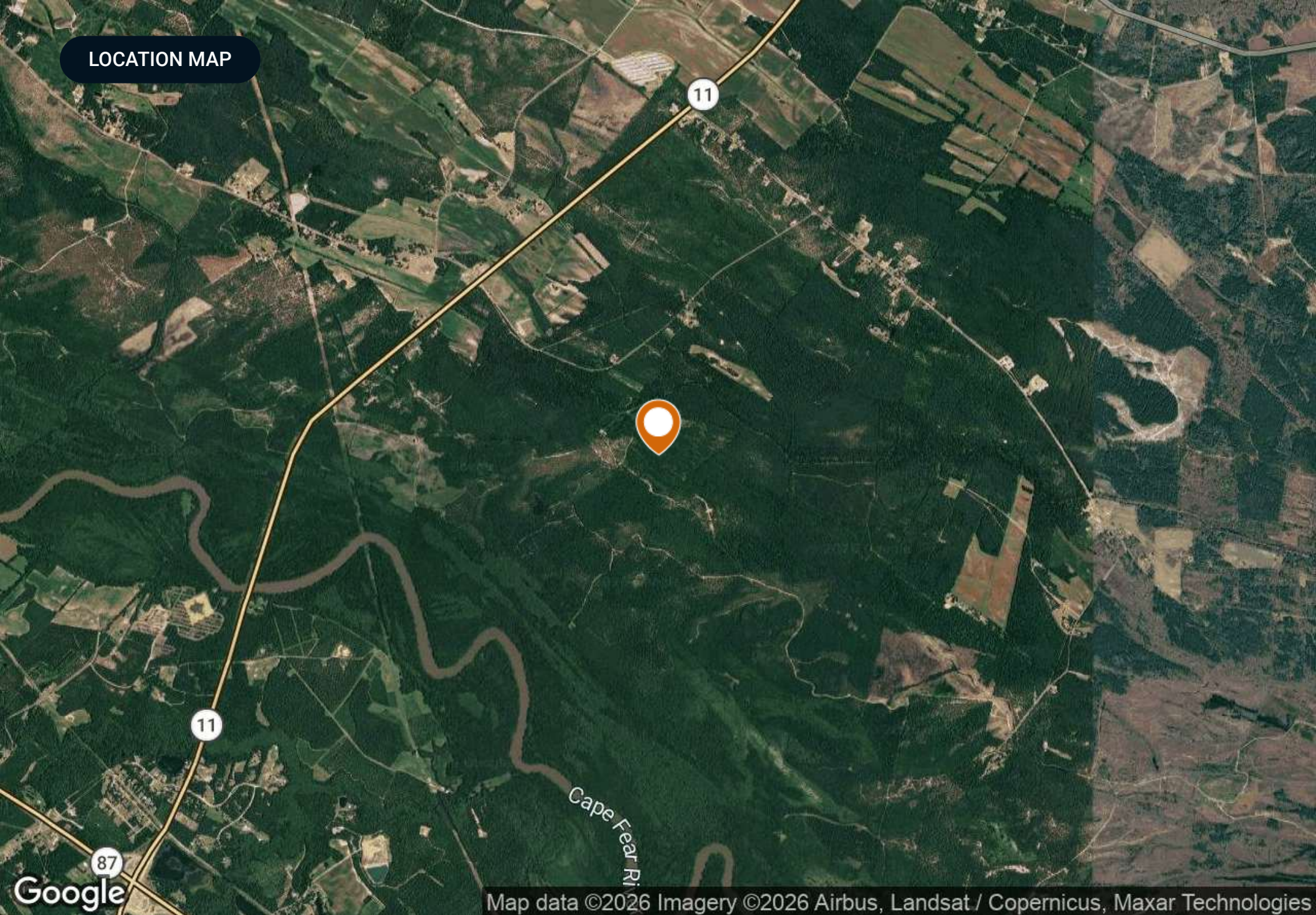


REGIONAL MAP

Google

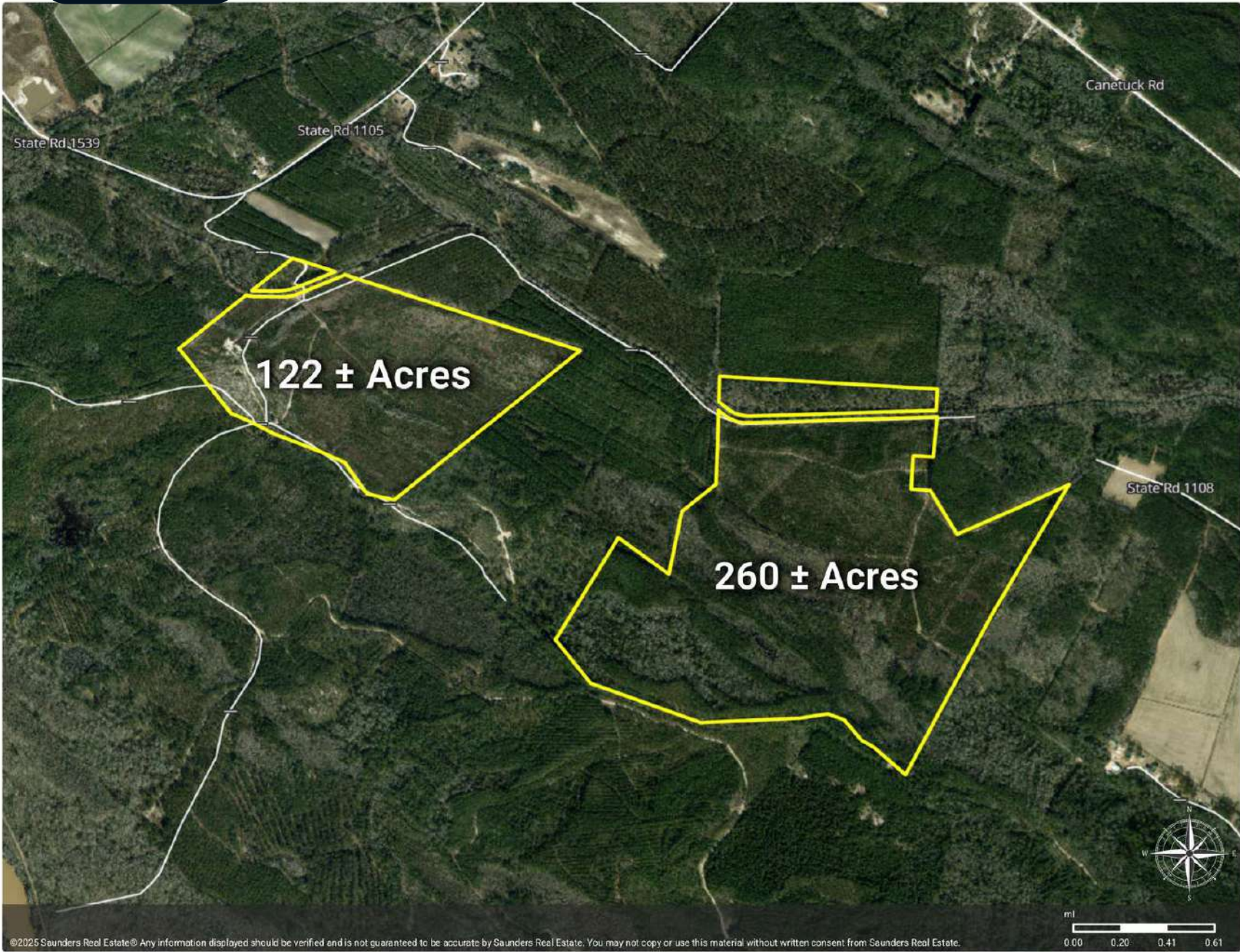
Map data ©2026 Google

LOCATION MAP



Map data ©2026 Imagery ©2026 Airbus, Landsat / Copernicus, Maxar Technologies

**AERIAL MAP**

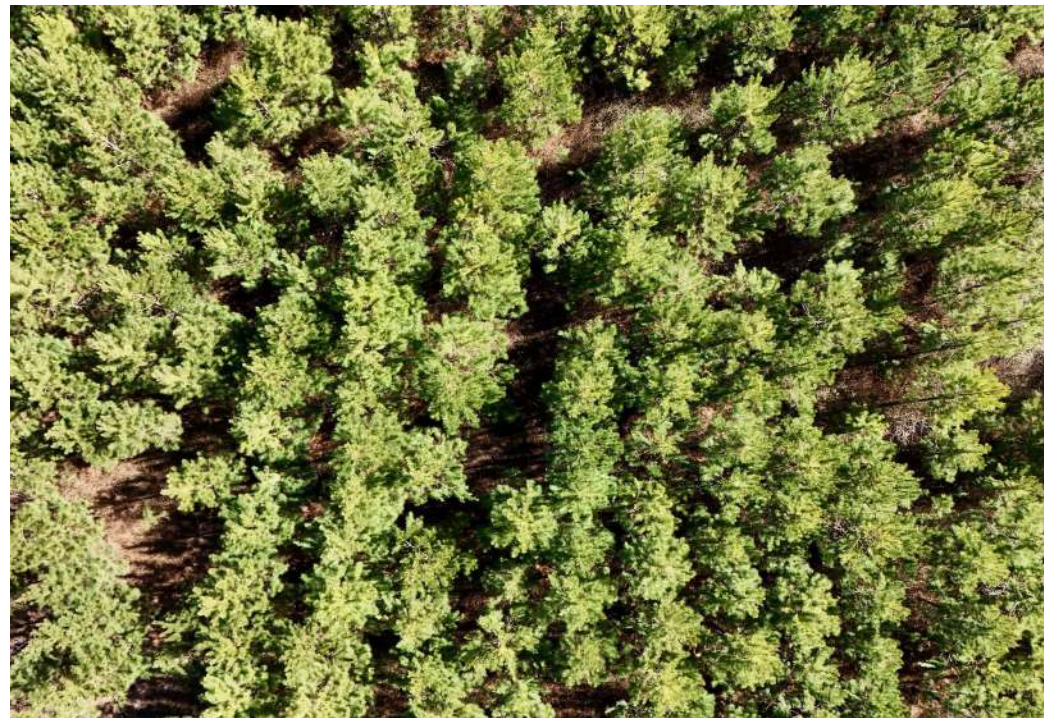


**Lewis Timber Tracts**

- Polygon
- Census Roadways TIGER



ADDITIONAL PHOTOS



ADDITIONAL PHOTOS



## ADVISOR BIOGRAPHY



### Kenneth Chesson

Senior Advisor

kenneth@saundersrealestate.com

Direct: **877-518-5263 x378** | Cell: **252-809-3896**

## Professional Background

Kenneth Chesson is a Lead Broker and a Senior Advisor at Saunders Real Estate.

Kenneth was born and raised in eastern North Carolina. A lifelong resident of Williamston, he has always had a passion for the outdoors and land. At a very early age, Kenneth began hanging around his family's farm equipment dealership. He started out mowing the grass and stocking the shelves, eventually working his way up to the sales department.

Kenneth is a proud veteran of the United States Marine Corps and a graduate of East Carolina University.

Since 2000, Kenneth has been a part of the outdoor industry working as a freelance outdoor videographer. His travels have taken him from New Zealand to Africa and from the North Pole down into Mexico, working side-by-side with professional hunters, country music artists, NASCAR drivers, and professional athletes. Kenneth's work has been broadcast on such networks as ESPN Outdoors, Discovery, Outdoor Channel, and Sportsman Channel.

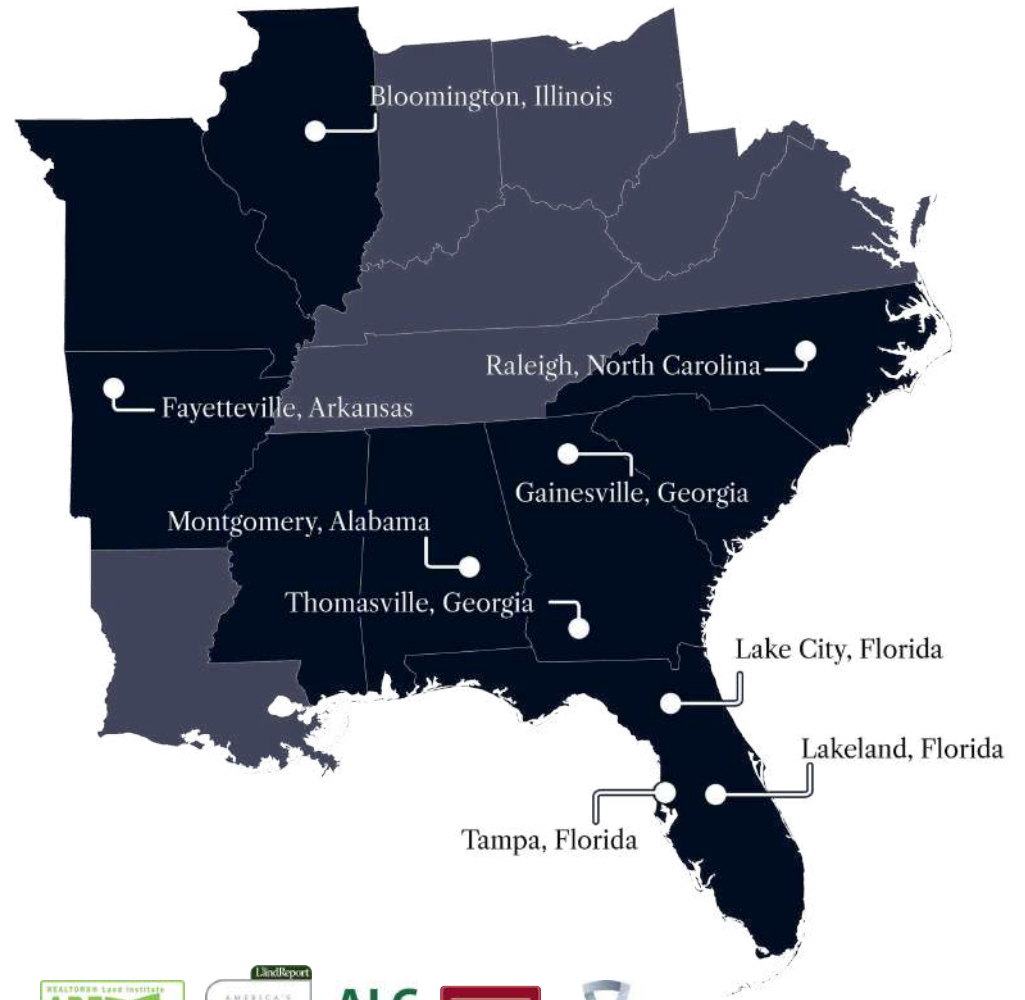
With over 30 years of experience working with farmers and more than two decades in the outdoor industry, Kenneth brings his passion for selling and the outdoors to every transaction. He helps clients buy and sell property that fits their long-term goals, whether it's for hunting, farming, or land investment.

Kenneth specializes in:

- Hunting & Recreation
- Farming & Agriculture



At Saunders Real Estate, we deliver full-service real estate solutions, built on more than 30 years of trusted experience. Our dedicated teams offer tailored guidance backed by deep regional insight and a proven track record. We believe that successful outcomes start with strong relationships built on trust and a shared commitment to your goals.



877-518-5263 • [info@saundersrealestate.com](mailto:info@saundersrealestate.com)