



Fischbach
LAND COMPANY

**S COUNTY ROAD 39
ACREAGE HOMESITES**

3 Lots Available 5 - 15.35± Acres

Property Overview

THREE ADJOINING ACREAGE HOMESITES IN LITHIA! These homesites offer a blank canvas for your rural homestead! With 5 acres in the country, you'll have room for animals, a garden and plenty of room for a spectacular outside living space! The property is directly across the street from Alafia River Corridor Nature Preserve which is a 4,000 acre park with over 9 miles of public equestrian and hiking trails. Each lot has large, statement oaks on the property and wide-open, thriving pastures.

Enjoy the breathtaking sunrises and sunsets with the uninhibited views that come with country-living! Less than 15 minutes to Fishhawk, you'll be conveniently located to schools, shopping and dining! With Alafia River State Park, Chito Branch Preserve and Alderman's Ford, there are ample opportunities less than 10 minutes away to enjoy the outdoors!



www.FischbachLandCompany.com/SCountyRoad39AcreageHomesites

Property Highlights



Beautiful Oak Trees



Picturesque Homesite



Close to State Parks



Property Address	0 S County Road 39, Lithia, FL 33547	Future Land Use	AR
Property Type	Acreage Homesites	Price	\$1,135,000
Size	15.35 ± Acres	County	Hillsborough
Zoning	AR	STR	31-30-22

Lot 1



LOT 1

Acres: 5.33 Acres

Price: \$385,000

Lot 2



LOT 2

Acreage: 5.01 Acres

Price: \$385,000

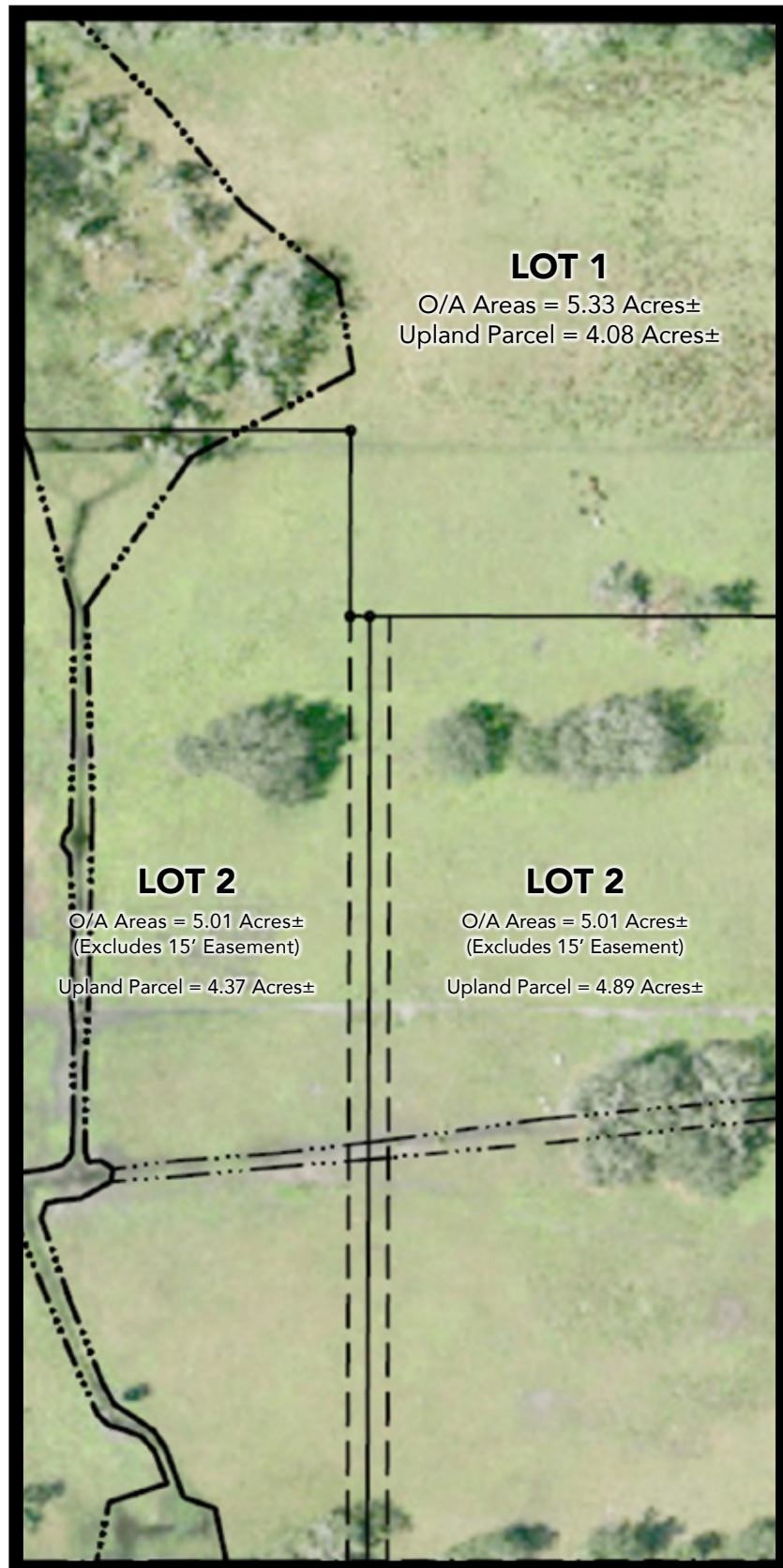
Lot 3



LOT 3

Acreeage: 5.01 Acres

Price: \$365,000





Advent Health

WATSON CLINIC LP
Quality Healthcare for Every Generation

Tampa International Airport

FlyLakeland
Lakeland Linder International Airport

LAKELAND

FLORIDA TECHNICAL COLLEGE
CONTINUING EDUCATION

HILLSBOROUGH
Community College

Southern
TECHNICAL COLLEGE

Walmart
 Harbor Freight Tools
 KFC
 Sprinkles
 Wawa
 Kwik Trip
 Starbucks
 Fresh Market
 Wendy's
 Chick-fil-A
 Auto Zone

0 S County Road 39
Click here for directions

DOLLAR GENERAL
FAMILY DOLLAR
by Family Dollar

MARATHON
SUNOCO
Race Trac
MURPHY USA

Shell
MARATHON
Chevron
bp

Publix
DUNKIN'
McDonald's
AutoZone
SONIC
OUTBACK

- HOSPITALS
- COLLEGES
- AIRPORTS
- RETAILERS

Fischbach **LAND COMPANY**

FISCHBACH LAND COMPANY

917 S PARSONS AVENUE, BRANDON, FL 33511

PHONE: 813-540-1000



REED FISCHBACH | Broker
reed@fischbachlandcompany.com



MELISSA HINTON | Agent
melissa@fischbachlandcompany.com