

201± Acre Hunting/Recreational Tract

County Road 2277

McCool, Attala County, MS



\$591,442



Expect More. Get More.

Property Information

Location:

- Attala County, MS
- County Road 2277

Coordinates:

- 33.21635, -89.47738

Property Use:

- Hunting
- Recreation
- Timber

Property Highlights

- 201± acres
- 4,267± ft of Gravel Road Frontage
- Internal Road System
- Timber Investment
- 3 Food Plots
- Power and Water Available



Expect More. Get More.

**A Real Estate Expert
You Can Trust!**

**KADERO
EDLEY**
REALTOR®

Office: 601.898.2772

Cell: 601.488.7000

Kadero@TomSmithLand.com

The Estate

201± Acres

Located just 16 miles north of Kosciusko, MS, this 201± acre tract in Attala County offers a well-rounded combination of hunting, recreation, and investment potential. The property features over 4,200± feet of gravel road frontage on County Road 2277 along with an internal road system that provides easy accessibility. With power and water available, it's well-equipped for future improvements or a hunting camp. The land includes three established food plots and supports a strong population of deer and turkey, making it ideal for outdoor enthusiasts. Mature pines and hardwoods add long-term value, creating an excellent timber investment opportunity as well. Give Kadero a call today for your private showing.



**KADERO
EDLEY**
REALTOR®

Office: 601.898.2772
Cell: 601.488.7000

Kadero@TomSmithLand.com



Expect More. Get More.

Aerial Photos



**KADERO
EDLEY**
REALTOR®

Office: 601.898.2772
Cell: 601.488.7000

Kadero@TomSmithLand.com



Expect More. Get More.

Additional Photos



**KADERO
EDLEY**
REALTOR®

Office: 601.898.2772
Cell: 601.488.7000

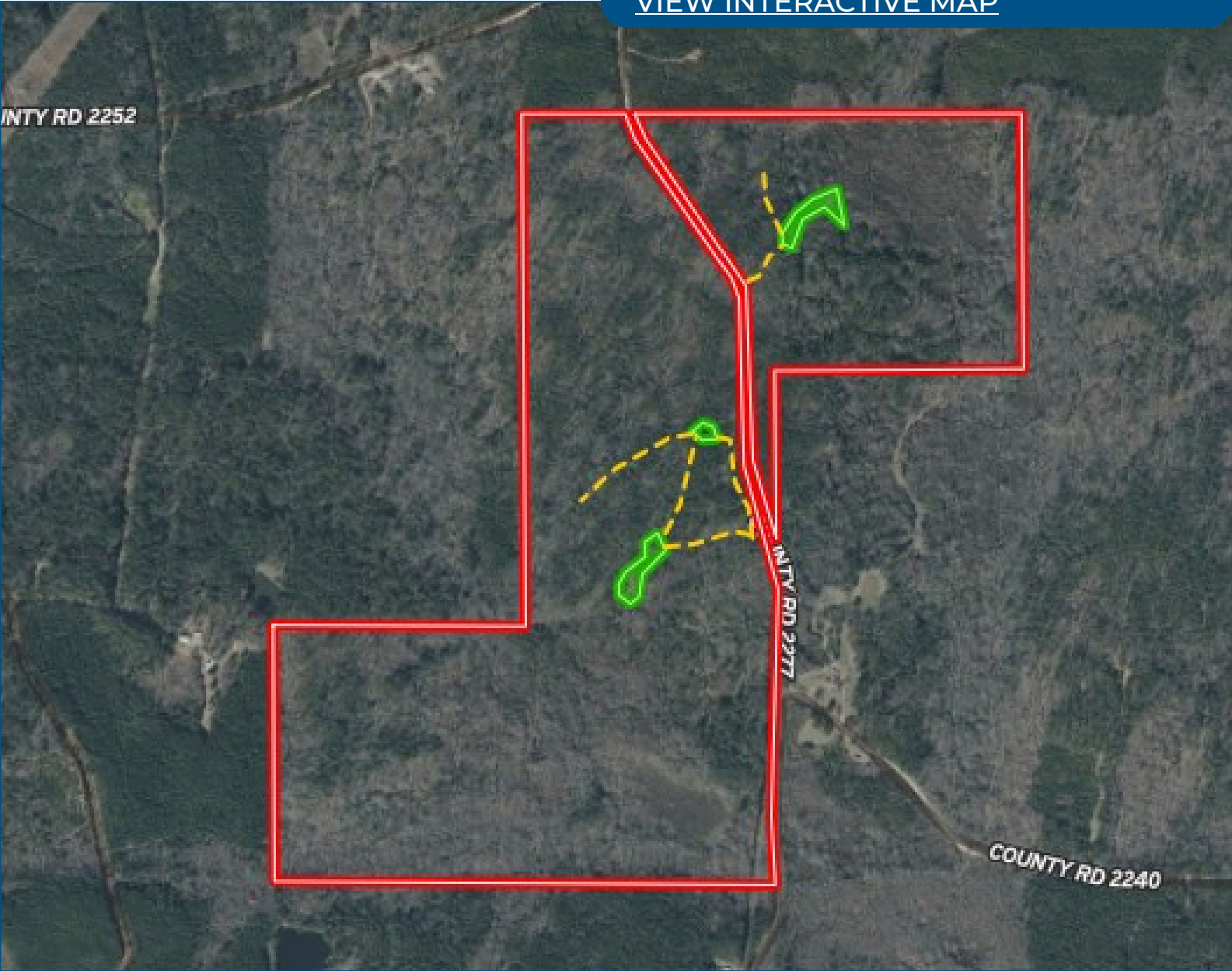
Kadero@TomSmithLand.com



Expect More. Get More.

Aerial Map

[VIEW INTERACTIVE MAP](#)



**KADERO
EDLEY**
REALTOR®

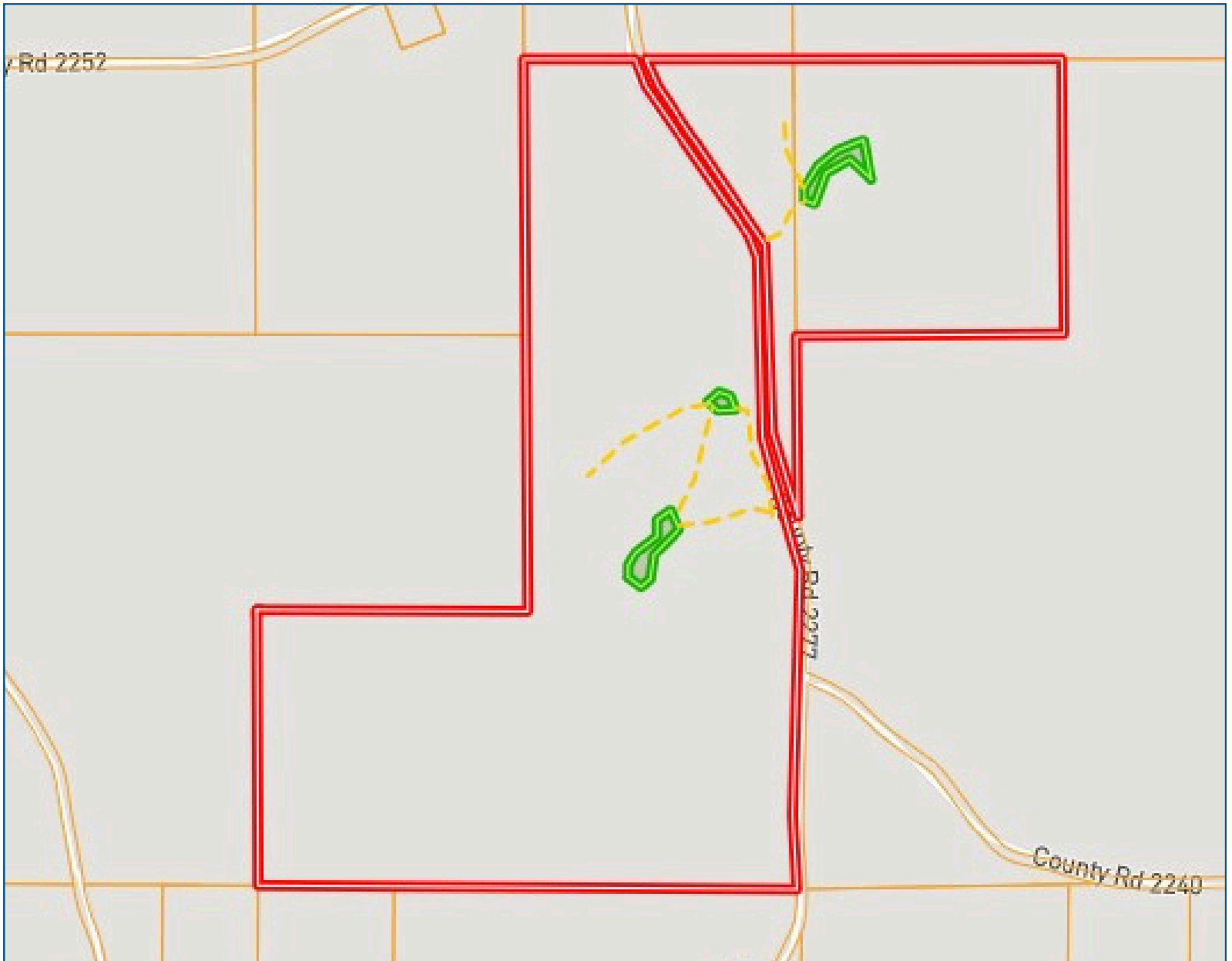
Office: 601.898.2772
Cell: 601.488.7000

Kadero@TomSmithLand.com



Expect More. Get More.

Ownership Map



**KADERO
EDLEY**

REALTOR®

Office: 601.898.2772

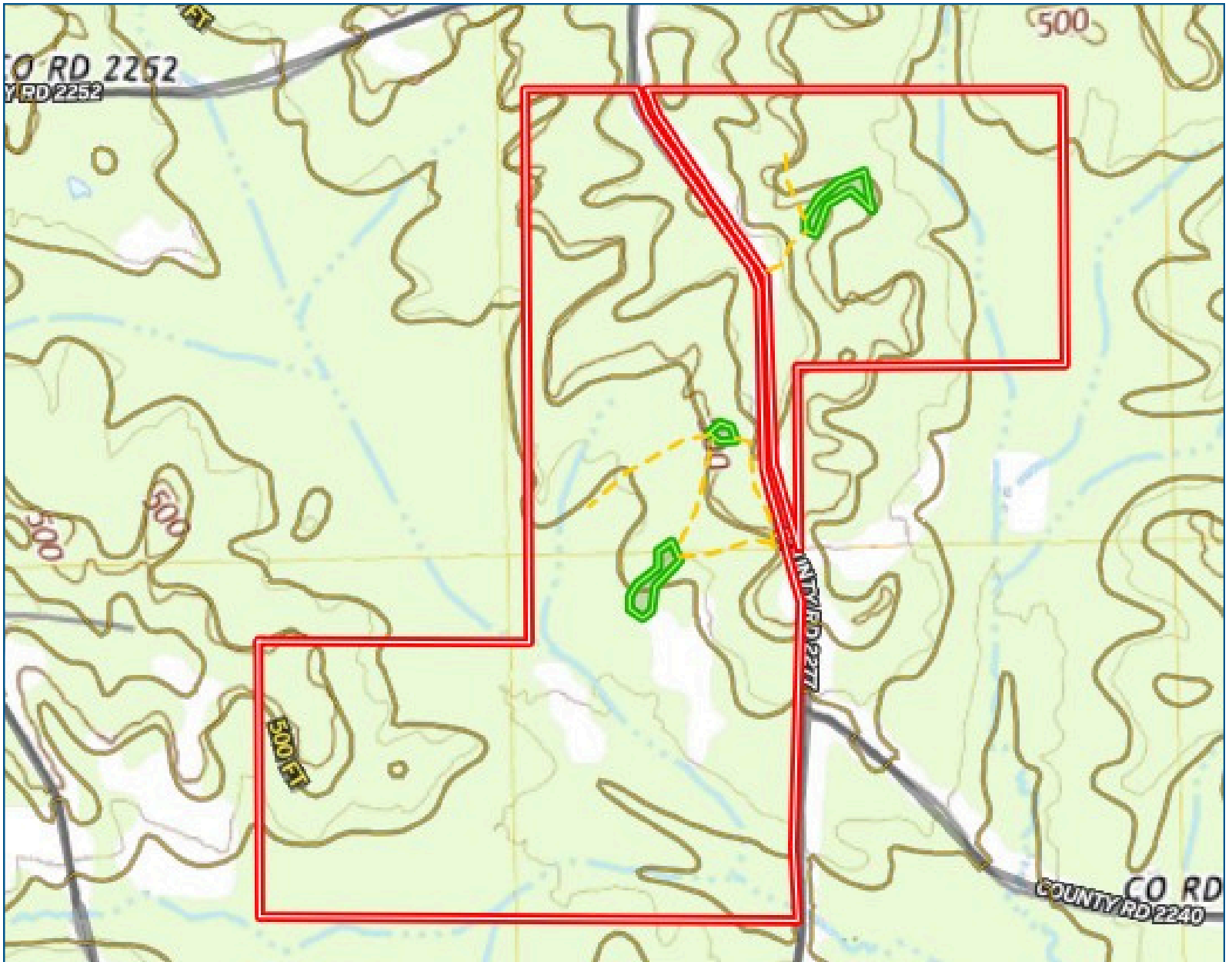
Cell: 601.488.7000

Kadero@TomSmithLand.com



Expect More. Get More.

Topo Map



**KADERO
EDLEY**

REALTOR®

Office: 601.898.2772

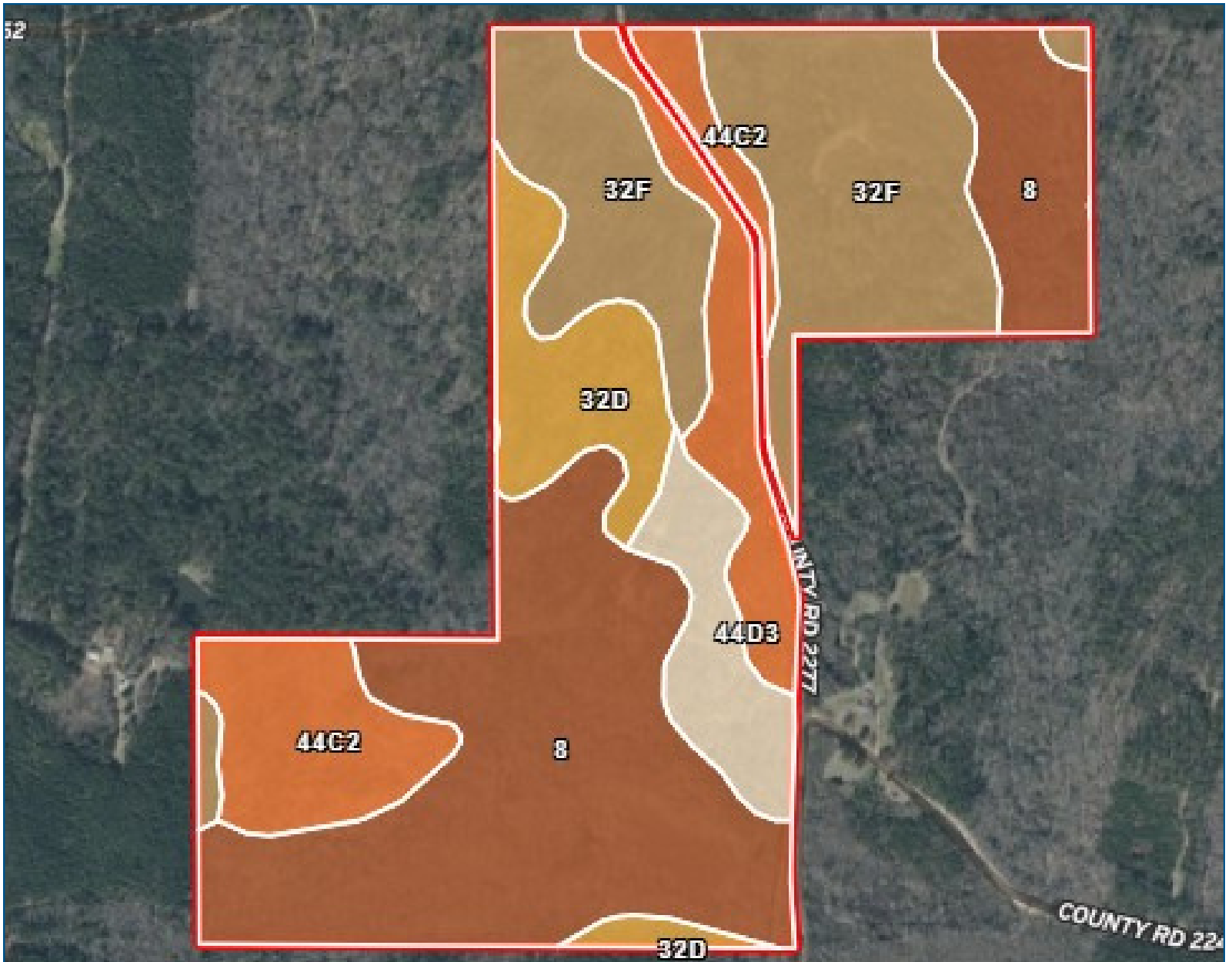
Cell: 601.488.7000

Kadero@TomSmithLand.com



Expect More. Get More.

Soil Map



**KADERO
EDLEY**

REALTOR®

Office: 601.898.2772

Cell: 601.488.7000

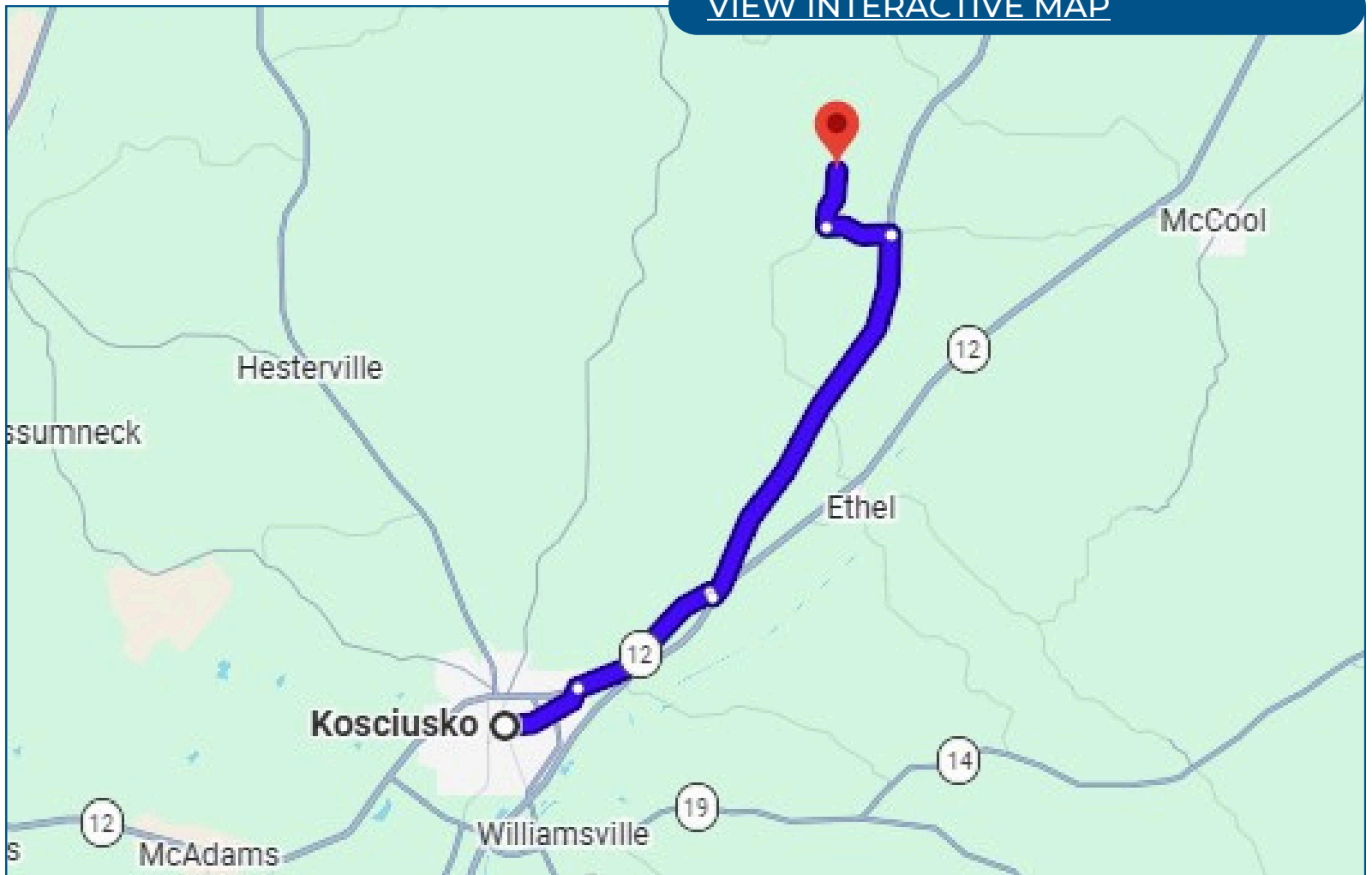
Kadero@TomSmithLand.com



Expect More. Get More.

Directional Map

[VIEW INTERACTIVE MAP](#)



From E Jefferson St in Kosciusko, MS: Head east on E Jefferson St 1.7 miles. Turn right onto MS-12 E for 3.3 miles. Turn right toward Natchez Trace Pkwy for 0.1 miles. Take a sharp left onto Natchez Trace Pkwy for 8.2 miles. Turn left onto Rock Port Rd for 1.3 miles. Turn right onto Co Rd 2277 for 1.2 miles and the property will be on your left.

**KADERO
EDLEY**
REALTOR®

Office: 601.898.2772
Cell: 601.488.7000

Kadero@TomSmithLand.com

