

**8.22± ACRES**  
**HAMILTON COUNTY, TN**  
**\$205,000**



**SMALLTOWN**  
HUNTING PROPERTIES  
& REAL ESTATE<sup>SM</sup>

OFFICE (423) 568-8339 | [WWW.SMALLTOWNPROPERTIES.COM](http://WWW.SMALLTOWNPROPERTIES.COM)

# THE HAMILTON 8.22

## PROPERTY PROFILE

### LOCATION:

- 12315 Endless View  
Soddy Daisy, TN 37379
- Hamilton County
- 12.9± Miles N of Soddy Daisy
- 17± Miles E of Dunlap
- 22.4± Miles SW of Dayton
- 28.3± Miles NE of Chattanooga

### COORDINATES:

- 35.34359, -85.15737

### PROPERTY USE:

- Potential Home/Cabin Site
- Recreational

### TAX INFORMATION:

- Tax ID – 025 036.16
- 2024 – \$308.75

### PROPERTY INFORMATION:

- 8.22± Surveyed Acres
- Access to Cumberland  
Trail State Park
- Small Creek



**SMALLTOWN**  
HUNTING PROPERTIES  
& REAL ESTATE<sup>SM</sup>

**WILLIAM SMITH**

LAND SPECIALIST

C: 662-647-4788

O: 423-568-8339

[william@smalltownproperties.com](mailto:william@smalltownproperties.com)

P.O. Box 9 - Birchwood, TN 37308

[smalltownproperties.com](http://smalltownproperties.com)

Information is believed to be accurate but not guaranteed.



# WELCOME TO THE HAMILTON 8.22

WELCOME TO THE HAMILTON 8.22, A PEACEFUL PROPERTY SITTING RIGHT NEXT TO THE CUMBERLAND TRAIL STATE PARK, GIVING YOU DIRECT ACCESS TO MILES OF HIKING, NATURE, AND OUTDOOR FUN. Whether you're looking for a private getaway or land to build your dream home, this 8.22± acre Hamilton County, TN, spot has so much to offer.

There's great potential for a future home site, whether it be a cabin, full-time home, or weekend retreat. From there, you can enjoy amazing views of the surrounding hills and forest. Local wildlife is all around, with deer and turkeys often seen on the property. Additionally, you will find a small creek meandering about. If you enjoy hunting, watching animals, or just being in nature, this tract is an ideal fit. With direct access to the state park, you'll have even more land to explore right out your back door.

The Hamilton 8.22 offers privacy, space, and access to some of Tennessee's best outdoor areas—the options are endless!

**Contact William Smith today to learn more  
and schedule a private tour.**



**SMALLTOWN**  
HUNTING PROPERTIES  
& REAL ESTATE<sup>SM</sup>

**WILLIAM SMITH**

LAND SPECIALIST

C: 662-647-4788

O: 423-568-8339

[william@smalltownproperties.com](mailto:william@smalltownproperties.com)

P.O. Box 9 - Birchwood, TN 37308

[smalltownproperties.com](http://smalltownproperties.com)

Information is believed to be accurate but not guaranteed.



8.22± ACRES

HAMILTON COUNTY, TENNESSEE



# SMALLTOWN

HUNTING PROPERTIES  
& REAL ESTATE<sup>SM</sup>

**WILLIAM SMITH**

LAND SPECIALIST

C: 662-647-4788

O: 423-568-8339

[william@smalltownproperties.com](mailto:william@smalltownproperties.com)

P.O. Box 9 - Birchwood, TN 37308

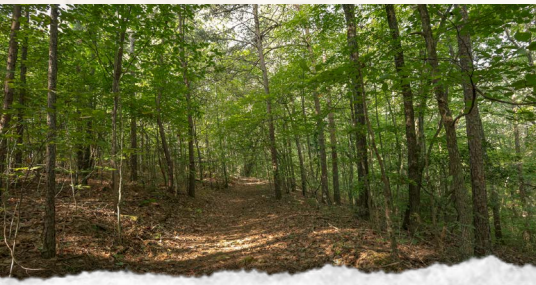
[smalltownproperties.com](http://smalltownproperties.com)

Information is believed to be accurate but not guaranteed.



8.22± ACRES

HAMILTON COUNTY, TENNESSEE



# SMALLTOWN

HUNTING PROPERTIES  
& REAL ESTATE<sup>SM</sup>

**WILLIAM SMITH**

LAND SPECIALIST

C: 662-647-4788

O: 423-568-8339

[william@smalltownproperties.com](mailto:william@smalltownproperties.com)

P.O. Box 9 - Birchwood, TN 37308

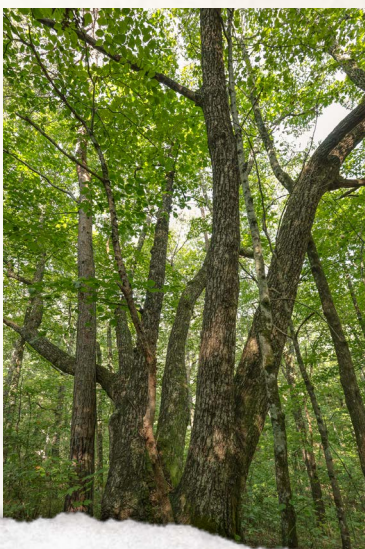
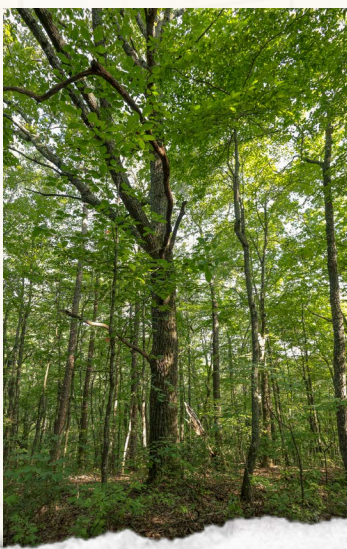
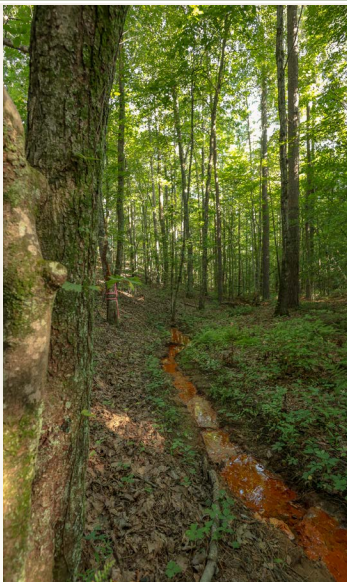
[smalltownproperties.com](http://smalltownproperties.com)

Information is believed to be accurate but not guaranteed.



8.22± ACRES

HAMILTON COUNTY, TENNESSEE



# SMALLTOWN

HUNTING PROPERTIES  
& REAL ESTATE<sup>SM</sup>

**WILLIAM SMITH**

LAND SPECIALIST

C: 662-647-4788

O: 423-568-8339

[william@smalltownproperties.com](mailto:william@smalltownproperties.com)

P.O. Box 9 - Birchwood, TN 37308

[smalltownproperties.com](http://smalltownproperties.com)

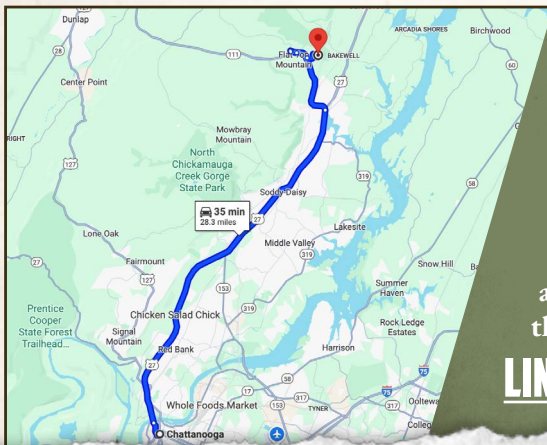
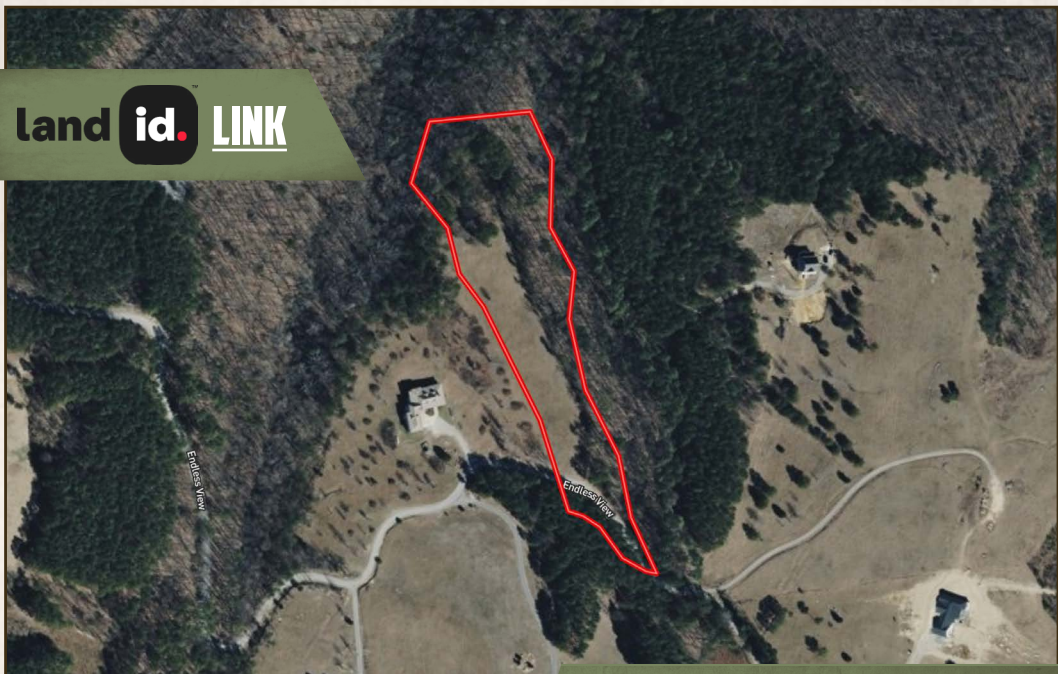
Information is believed to be accurate but not guaranteed.



8.22± ACRES

HAMILTON COUNTY, TENNESSEE

land id. LINK



Directions From Downtown Chattanooga, TN: Travel 20.9 miles north on US-27 N. Continue onto TN-111 N for 4.2 miles. Take the Jones Gap Road Exit and continue 0.3 miles. Make an immediate right on Heiss Mountain Road and proceed 1.1 miles. Turn left on Endless View and in 1 mile, the property will be on the left at a private gravel road.

[LINK TO GOOGLE MAP DIRECTIONS](#)



**SMALLTOWN**  
HUNTING PROPERTIES  
& REAL ESTATE<sup>SM</sup>



**WILLIAM SMITH**

LAND SPECIALIST

C: 662-647-4788

O: 423-568-8339

[william@smalltownproperties.com](mailto:william@smalltownproperties.com)

P.O. Box 9 - Birchwood, TN 37308

[smalltownproperties.com](http://smalltownproperties.com)

Information is believed to be accurate but not guaranteed.