



"Your One Stop Real Estate Shop"

LAND & TIMBER | RESIDENTIAL | COMMERCIAL | OIL & GAS

* ONLY \$720,000.00

* 200 acres +/-

* \$3,600/ac

Swamp Donkey Heaven

200 acres with Live Creek on Large Bass/Crappie Lake

- Abundant Wildlife
- All Utilities
- Mature Hardwoods & Pine
- Great interior road system
- 35 ac plus Lake (Big Bass)
- Rolling Terrian
- Address: 157 Eulogy Rd, Lexington, MS 39095



Clint B. Stewart

MOBILE: 601-757-8787

cbstewart@4cornerprop.com



Office: 601-952-2828

Fax: 601-510-9446

www.4cplandandhomes.com



Holmes County Finest

- Big Buck Country
- Big Bass Lake

Highly Maintained

- Great Interior Roads
- Big Live Creek



Large Lake

- Big Hardwoods
- Pine Ridges



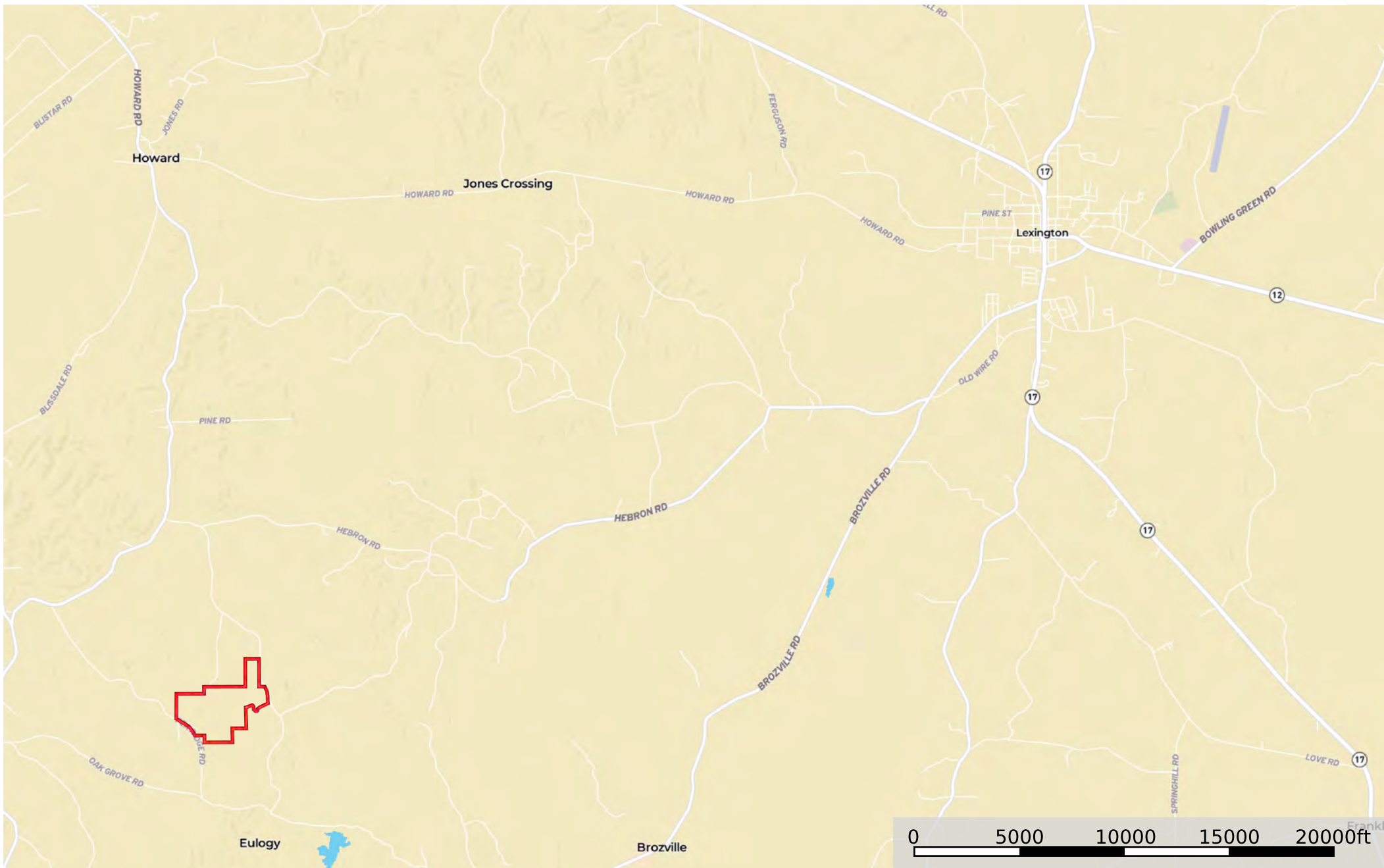
Clear Water Creek

- Fishing (Bass & Crappie)
- Year Around Opportunities



Holmes King Tract

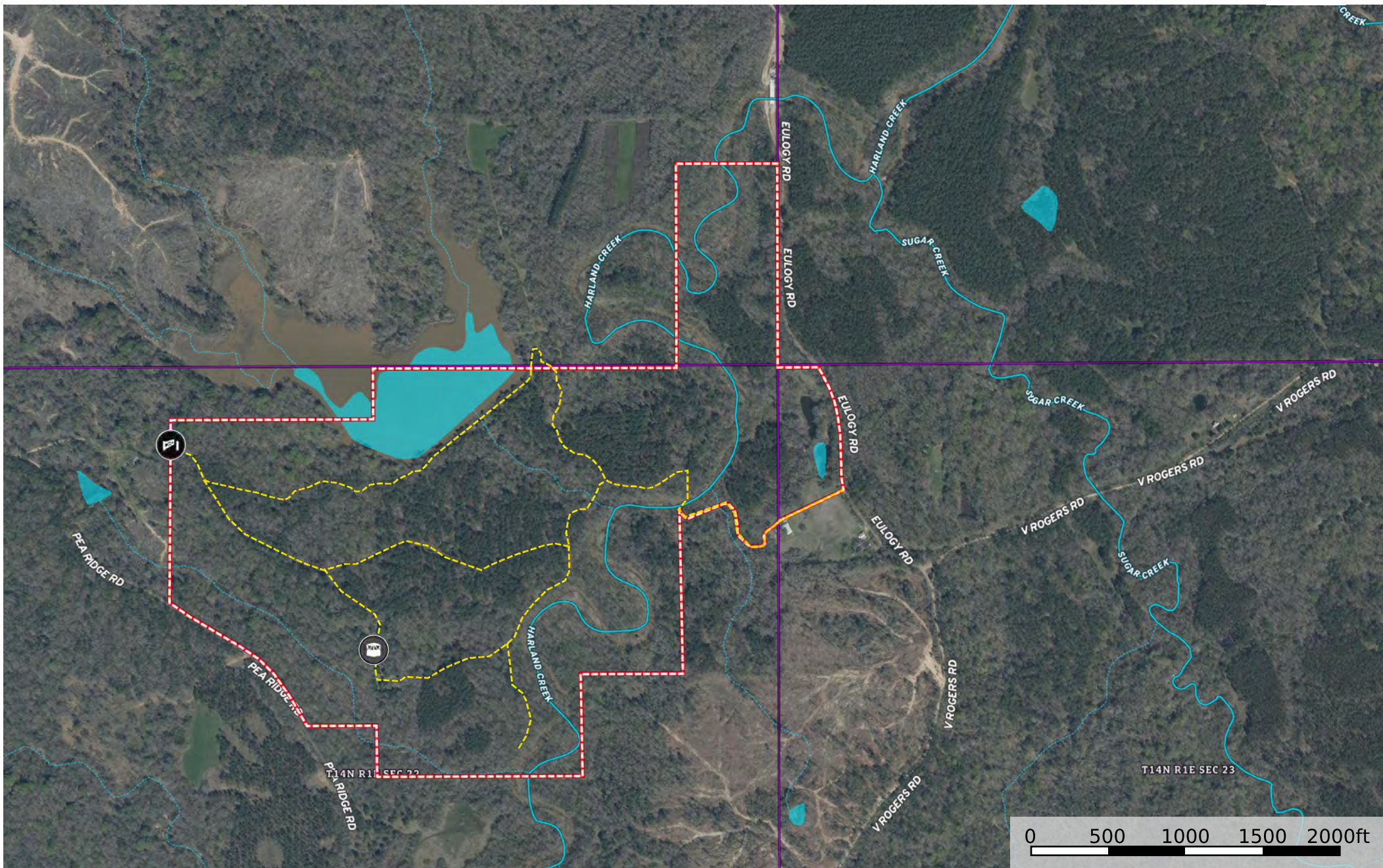
Mississippi, AC +/-



 Boundary

Holmes King Tract

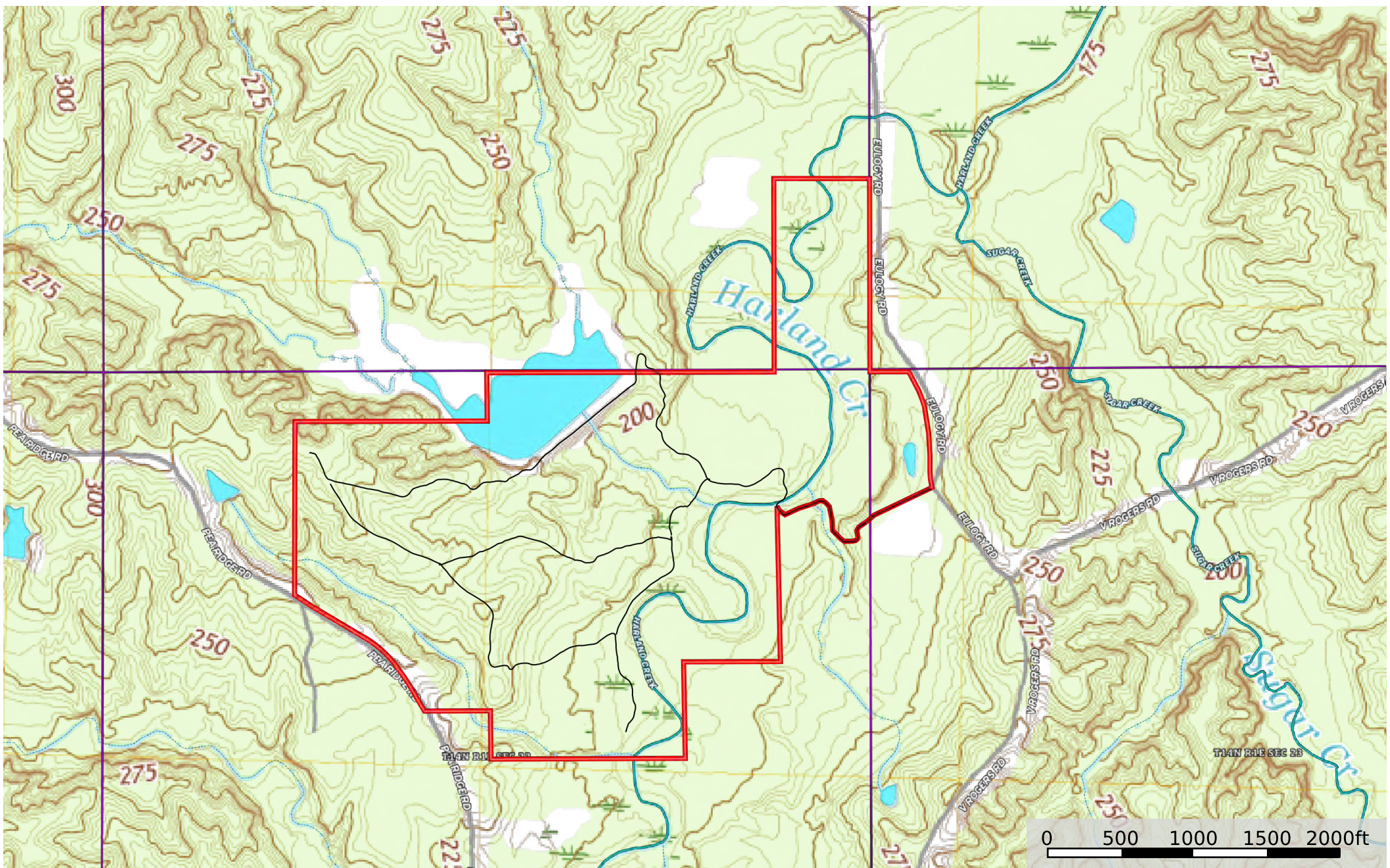
Mississippi, AC +/-



- Blind
- Gate
- Road / Trail
- Boundary
- Stream, Intermittent
- River/Creek
- Water Body

Holmes King Tract

Mississippi, AC +/-



- Track
- Boundary
- Stream, Intermittent
- River/Creek
- Water Body