

# Rare 29± Acre Farmstead with a Beautiful Country Home

Jones County

1837 Highway 588, Ellisville, MS 39437



**\$599,900**



David Belden



Dale Wilds



**DAVID BELDEN** ASSOCIATE BROKER, ALC®

O: 601.898.2772 | C: 601.415.3884  
DBelden@TomSmithLand.com

**DALE WILDS** REALTOR®

O: 601.898.2772 | C: 662.715.7109  
Dale@TomSmithLand.com

**Expect More. Get More.**

*The Real Estate Experts You Can Trust!*



[TomSmithLandandHomes.com](http://TomSmithLandandHomes.com)

Office: 601.898.2772

# Property Information

## Coordinates:

- 31.618, -89.269

## Property Use:

- Mini Farm
- Farmstead
- Gardening

# Property Highlights

- 29± Private Acres
- No Restrictions
- 3 Bedroom, 3 Bathroom Home
- 3,200 sq. ft. Home
- 1,500 sq. ft. Workshop
- Storage Shed
- 3,500 sq. ft. Covered Pole Barn
- 2± Acre Pond

[CLICK TO VIEW YOUTUBE VIDEO](#)



**DAVID BELDEN** ASSOCIATE BROKER, ALC®  
O: 601.898.2772 | C: 601.415.3884  
DBelden@TomSmithLand.com



**DALE WILDS** REALTOR®  
O: 601.898.2772 | C: 662.715.7109  
Dale@TomSmithLand.com

**Expect More. Get More.**

*The Real Estate Experts You Can Trust!*



[TomSmithLandandHomes.com](http://TomSmithLandandHomes.com)

Information is believed to be accurate but not guaranteed.

# The Estate

29± Acres

Situated on 29± acres of private, unrestricted land, this property offers the ideal setup for a mini farm, farmstead, or anyone seeking true country living. With a blend of open pastureland and scenic space to roam, the possibilities here are wide open—whether you're raising livestock, gardening, or simply enjoying the peace and privacy of your own acreage.

The land features a beautiful 2± acre pond, perfect for fishing, relaxing, or enhancing your homestead lifestyle. Existing improvements make this property especially functional, including a 3,500± square foot covered pole barn for equipment or livestock, a 1,500± square foot workshop, and an additional storage shed—ready to support your farm, hobbies, or outdoor lifestyle from day one.

The 3,200± square foot home offers 3 bedrooms and 3 full bathrooms with a comfortable, functional layout. Inside, you'll find a spacious living room, large kitchen with an oversized island, breakfast nook, and open dining area—ideal for gathering after a day on the land. Fresh paint throughout provides an updated feel, while a dedicated office offers workspace flexibility. The primary suite includes a recently updated bath, and a full bath near the rear entrance is perfectly suited for cleaning up after time outdoors.

Enjoy views of your private acreage from the front porch, rear patio, or sunroom—bringing the outdoors in and making the most of this peaceful setting.

If you've been searching for land with no restrictions and the freedom to create your own homestead, this property is a rare opportunity to live the country lifestyle your way.



**DAVID BELDEN**  
ASSOCIATE BROKER, ALC®  
O: 601.898.2772 | C: 601.415.3884  
DBelden@TomSmithLand.com



**DALE WILDS**  
REALTOR®  
O: 601.898.2772 | C: 662.715.7109  
Dale@TomSmithLand.com

**Expect More. Get More.**

*The Real Estate Experts You Can Trust!*

**TomSmithLandandHomes.com**

Information is believed to be accurate but not guaranteed.



# The Residence

3,200± Square Feet



**DAVID BELDEN**  
ASSOCIATE BROKER, ALC®  
O: 601.898.2772 | C: 601.415.3884  
DBelden@TomSmithLand.com

**DALE WILDS**  
REALTOR®  
O: 601.898.2772 | C: 662.715.7109  
Dale@TomSmithLand.com

**Expect More. Get More.**

*The Real Estate Experts You Can Trust!*

[TomSmithLandandHomes.com](http://TomSmithLandandHomes.com)

Information is believed to be accurate but not guaranteed.





**DAVID BELDEN**  
ASSOCIATE BROKER, ALC®  
O: 601.898.2772 | C: 601.415.3884  
DBelden@TomSmithLand.com

**DALE WILDS**  
REALTOR®  
O: 601.898.2772 | C: 662.715.7109  
Dale@TomSmithLand.com

**Expect More. Get More.**

*The Real Estate Experts You Can Trust!*

**TomSmithLandandHomes.com**

Information is believed to be accurate but not guaranteed.





**DAVID BELDEN**  
 ASSOCIATE BROKER, ALC®  
 O: 601.898.2772 | C: 601.415.3884  
 DBelden@TomSmithLand.com

**DALE WILDS**  
 REALTOR®  
 O: 601.898.2772 | C: 662.715.7109  
 Dale@TomSmithLand.com

**Expect More. Get More.**

*The Real Estate Experts You Can Trust!*

[TomSmithLandandHomes.com](http://TomSmithLandandHomes.com)

Information is believed to be accurate but not guaranteed.





**DAVID BELDEN**  
 ASSOCIATE BROKER, ALC®  
 O: 601.898.2772 | C: 601.415.3884  
 DBelden@TomSmithLand.com



**DALE WILDS**  
 REALTOR®  
 O: 601.898.2772 | C: 662.715.7109  
 Dale@TomSmithLand.com

**Expect More. Get More.**

*The Real Estate Experts You Can Trust!*

**TomSmithLandandHomes.com**

Information is believed to be accurate but not guaranteed.



# Aerial Photos



**DAVID BELDEN**  
ASSOCIATE BROKER, ALC®  
O: 601.898.2772 | C: 601.415.3884  
DBelden@TomSmithLand.com

**DALE WILDS**  
REALTOR®  
O: 601.898.2772 | C: 662.715.7109  
Dale@TomSmithLand.com

**Expect More. Get More.**

*The Real Estate Experts You Can Trust!*

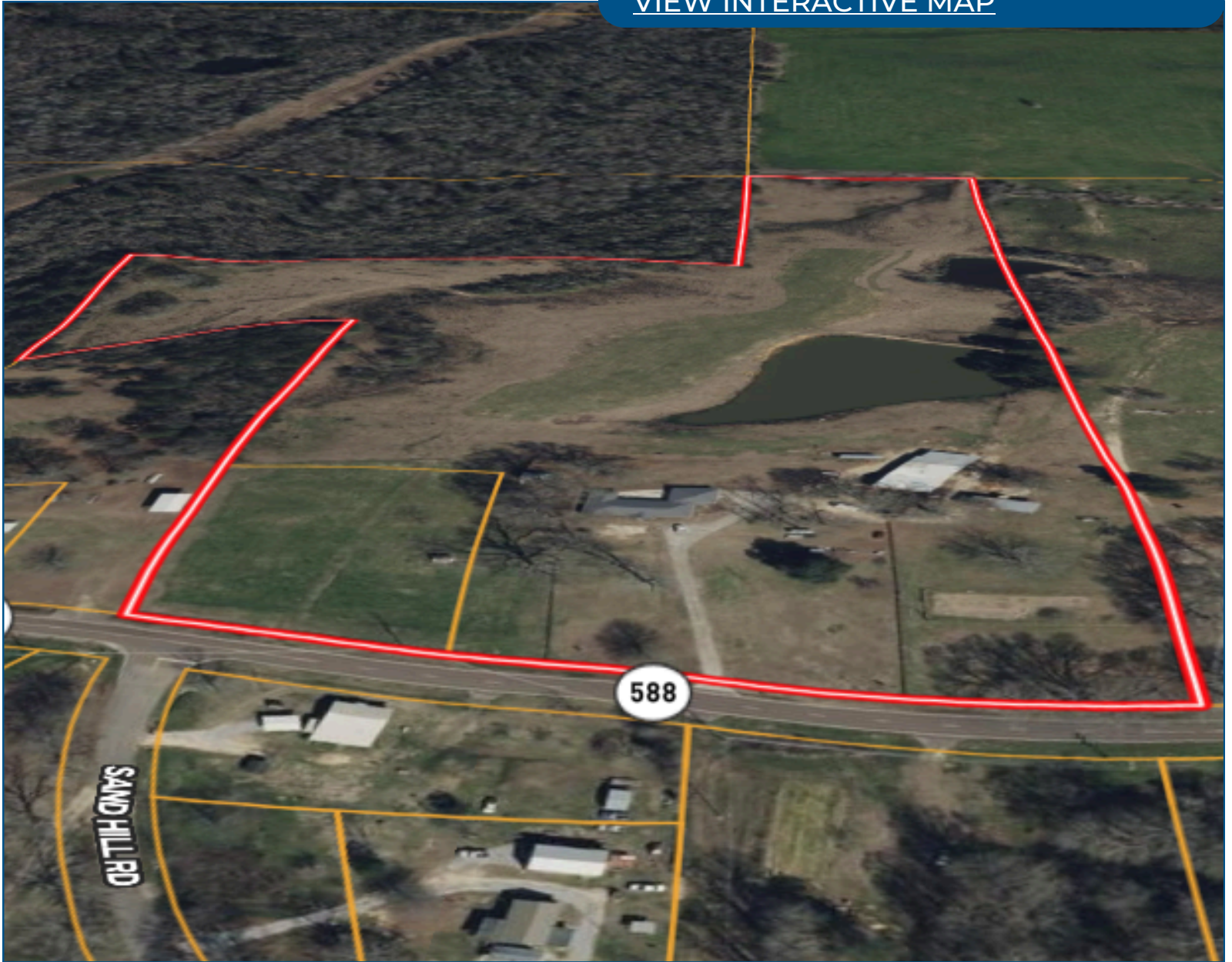
[TomSmithLandandHomes.com](http://TomSmithLandandHomes.com)

Information is believed to be accurate but not guaranteed.



# Aerial Map

[VIEW INTERACTIVE MAP](#)



**DAVID BELDEN**  
ASSOCIATE BROKER, ALC®  
O: 601.898.2772 | C: 601.415.3884  
DBelden@TomSmithLand.com



**DALE WILDS**  
REALTOR®  
O: 601.898.2772 | C: 662.715.7109  
Dale@TomSmithLand.com

**Expect More. Get More.**

*The Real Estate Experts You Can Trust!*

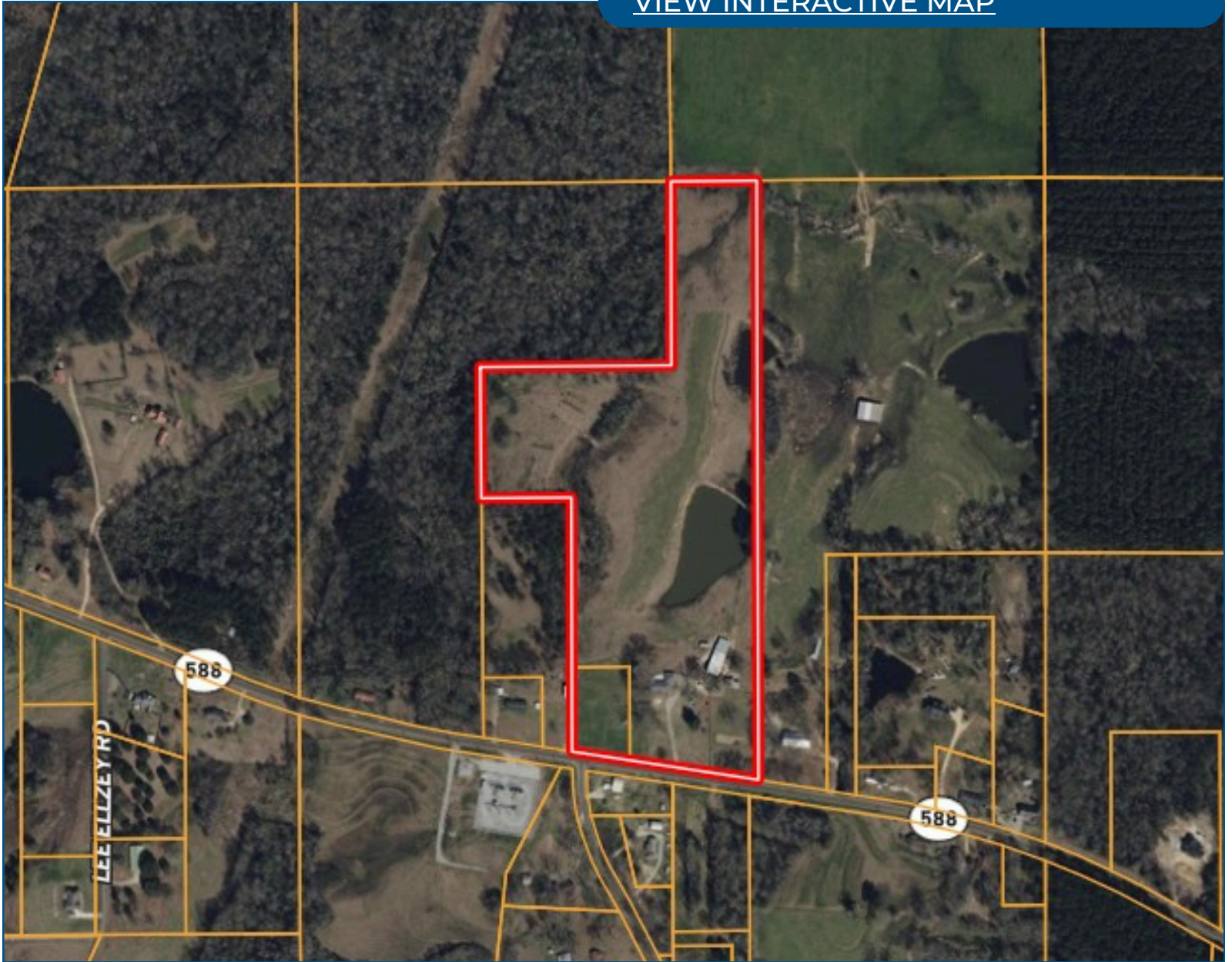
[TomSmithLandandHomes.com](http://TomSmithLandandHomes.com)

Information is believed to be accurate but not guaranteed.



# Ownership Map

[VIEW INTERACTIVE MAP](#)



**DAVID BELDEN**  
ASSOCIATE BROKER, ALC®  
O: 601.898.2772 | C: 601.415.3884  
DBelden@TomSmithLand.com

**DALE WILDS**  
REALTOR®  
O: 601.898.2772 | C: 662.715.7109  
Dale@TomSmithLand.com

**Expect More. Get More.**

*The Real Estate Experts You Can Trust!*

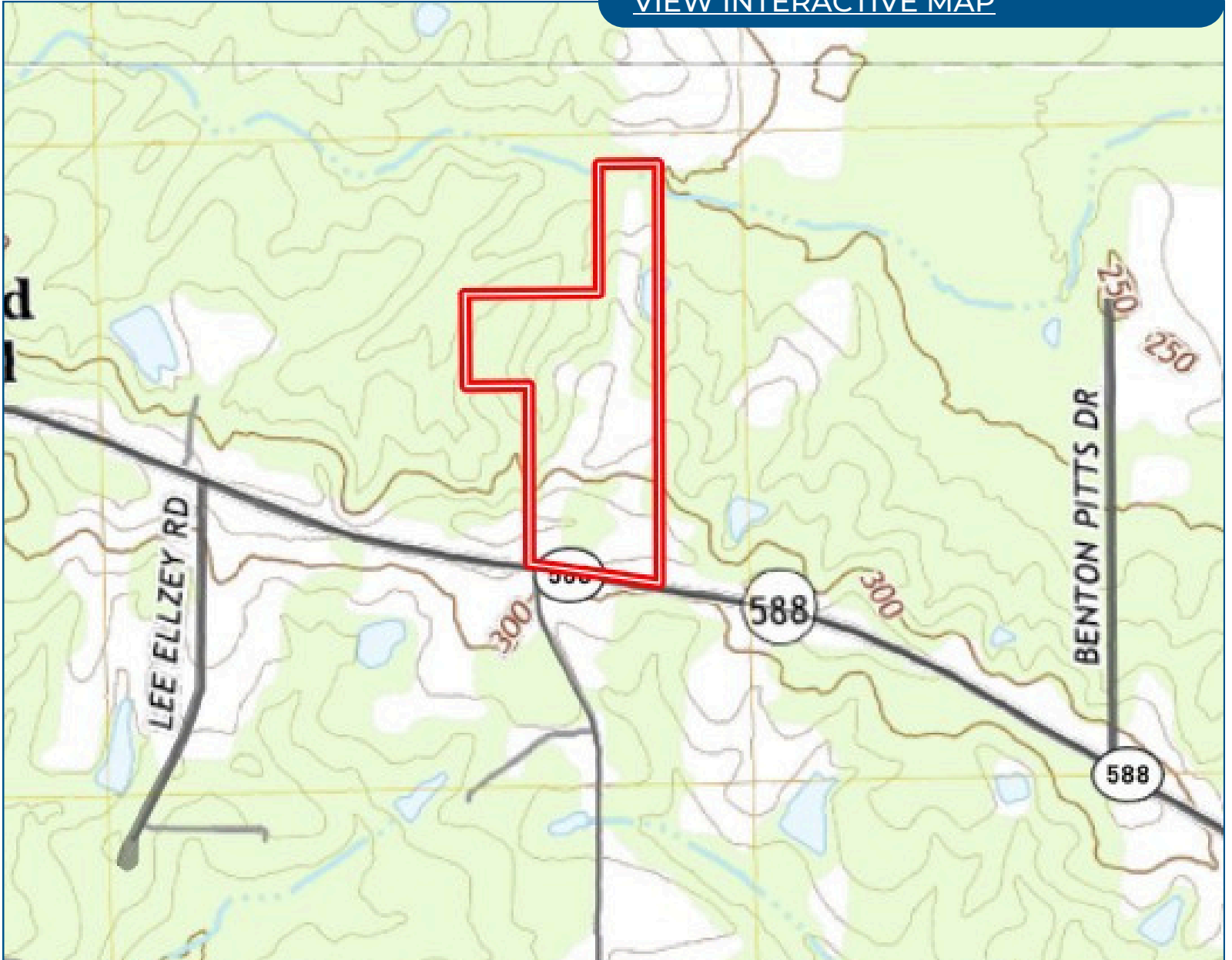


[TomSmithLandandHomes.com](http://TomSmithLandandHomes.com)

Information is believed to be accurate but not guaranteed.

# Topo Map

[VIEW INTERACTIVE MAP](#)



**DAVID BELDEN**  
ASSOCIATE BROKER, ALC®  
O: 601.898.2772 | C: 601.415.3884  
DBelden@TomSmithLand.com

**DALE WILDS**  
REALTOR®  
O: 601.898.2772 | C: 662.715.7109  
Dale@TomSmithLand.com

**Expect More. Get More.**

*The Real Estate Experts You Can Trust!*

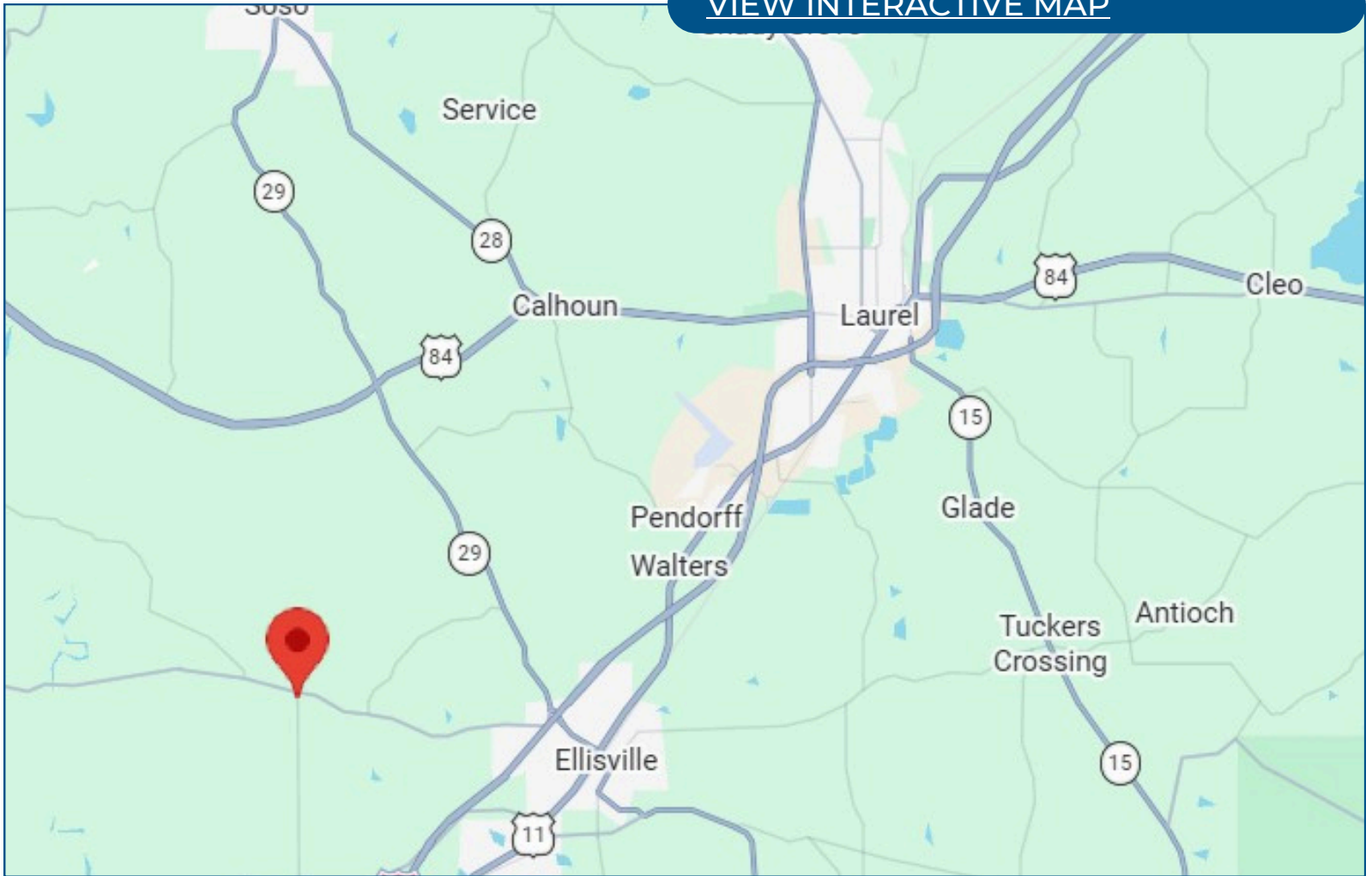
[TomSmithLandandHomes.com](http://TomSmithLandandHomes.com)

Information is believed to be accurate but not guaranteed.



# Directional Map

[VIEW INTERACTIVE MAP](#)



From the I-59/US-11 intersection, head south on I-59 for 4.5 miles, take exit 88 for MS-29 towards MS-588/Ellisville. Turn right onto MS-29 N/Hill St, then a slight left onto MS-29N. Then turn left onto MS-588 and after 3.8 miles the property will be on your right.

**DAVID BELDEN**  
ASSOCIATE BROKER, ALC®  
O: 601.898.2772 | C: 601.415.3884  
DBelden@TomSmithLand.com



**DALE WILDS**  
REALTOR®  
O: 601.898.2772 | C: 662.715.7109  
Dale@TomSmithLand.com

**Expect More. Get More.**

*The Real Estate Experts You Can Trust!*

[TomSmithLandandHomes.com](http://TomSmithLandandHomes.com)

Information is believed to be accurate but not guaranteed.

