

Chambers Co., AL

SEE PHOTOS
www.cypruspartners.com

Reference # 570

More info at
334-321-1865
Agent: Lisa Love

Land For Sale

80+- acres

\$220,000

Exclusive Agent For Owner

CYPRUS
PARTNERS

- Great Hunting and Timber Opportunity in Chambers County, AL
- ACCESSIBLE AND PRIVATE: Surrounding land is ALL in timber
- Food Plots and close to a mile of interior roads/trails make hunting and recreation easy
- Over 40 acres of improved pines planted in 2023; natural seedlings on 30+ acres; Boundary lines are painted
- Hardwoods border stream; topography looks promising for a pond site
- The same great hunting club has leased this land for decades. The lease can be retained or cancelled prior to Sale
- 1600+- feet of frontage on County Road 78. This is a public dirt road; paved Co Rd 83 is 2.6 miles to the north or 3.4 miles to the south
- Power runs through the property; The back side of Chambers County Fishing Lake is less than half mile through the woods; 4+- miles via the public roads
- In the Buckalew Mountain community, elevation gets over 860' with beautiful, long views toward the Chattahoochee River
- Buckalew Mt is famously home to Joe Louis, one of the greatest heavyweight boxing champions of all time. The city of LaFayette (6 miles to north) has an 8' tall bronze statue of Joe Louis, who grew up in a share cropping family very near this land
- About 11 miles or 20 minutes to I-85 Exit 70, Cusseta, with easy access to Atlanta, GA, LaGrange, GA, Auburn, AL; About 19 miles or 29 minutes to Exit 62 in Opelika

All distances, acres & boundary line flagging are estimates and should be independently verified

Driving Instructions

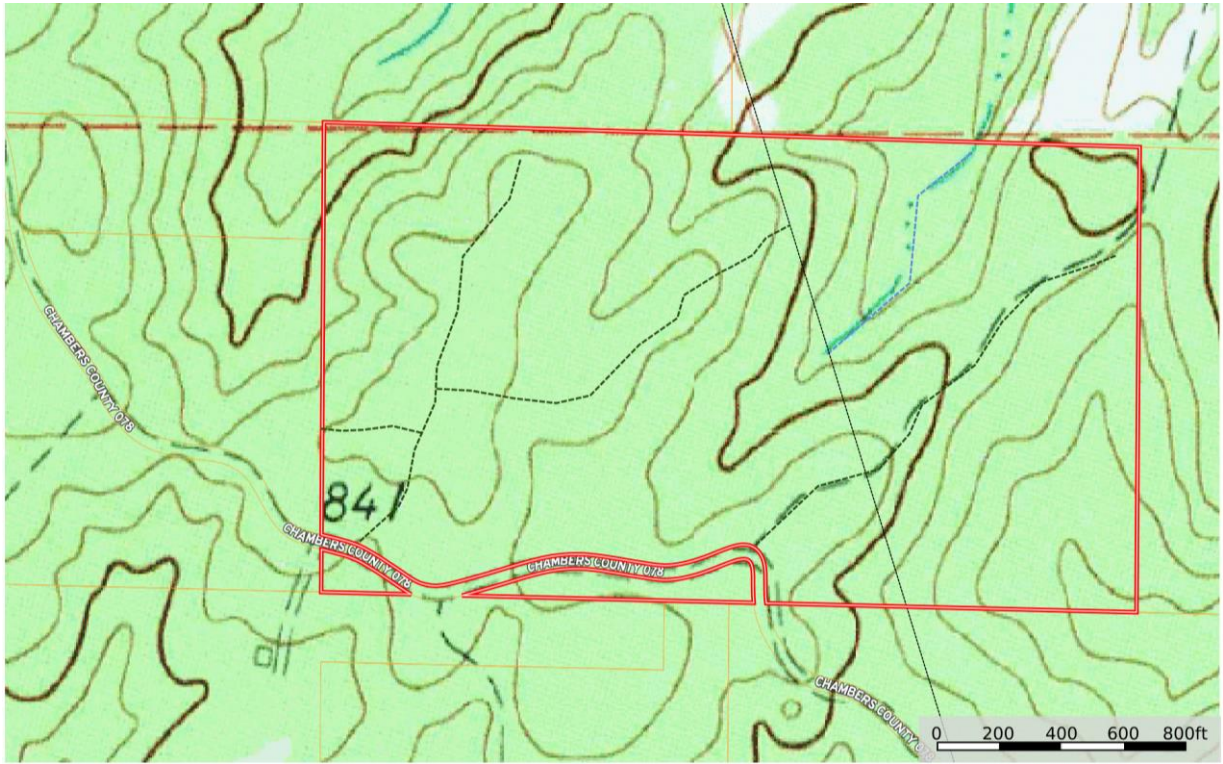
From I-85 Exit 70 at Cusseta – (11 miles or 20 minutes to the property) GPS 32.8143, -85.3614

From Exit 70, take CO Rd 388 west for 1.2 miles; slight right onto Co Rd 83 for 6 miles. Turn left onto Co Rd 174 (public dirt road) and go 1.7 miles. Turn right onto Co Rd 078 (public dirt road) and the property will be 1.9 miles on the right. Pink flagging on property lines and gates. Both gates are locked. Contact the agent, Lisa Love, 334-321-1865, to tour or for more info.

From Jack's in LaFayette – (6 miles or 13 minutes to the property)) GPS 32.8143, -85.3614

Turn left out of Jack's parking lot and cross intersection onto AL- 50. Go 0.9 miles and turn right onto Co Rd 83. Travel 2.7 miles and turn right onto Co Rd 78 (public dirt road). Immediately bear left and go 2.7 miles on Co Rd 78. You will pass CR488 on left, CR437 on right, and a house on the left. The property will be on the left. Pink flagging on property lines and gates. Both gates are locked. Contact the agent, Lisa Love, 334-321-1865, to tour or for more information.

Topographic Map



--- Transmissior Line --- Stream --- Road / Trail □ Boundary

Melisa Love

id The information contained herein was obtained from sources deemed to be reliable. Land ID® Services makes no warranties or guarantees as to the completeness or accuracy thereof.

Aerial Photo

