

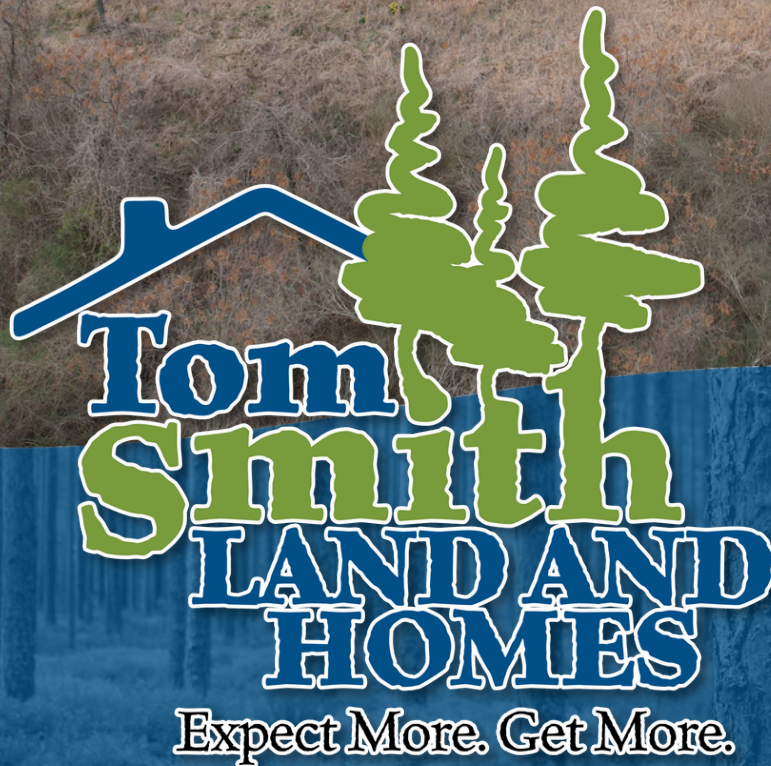
# 14.4± Acre Hunting Tract

Gordon Road

Duck Hill, Montgomery County, MS



**\$55,000**



# Property Information

## Location:

- Gordon Road, Duck Hill, MS

## Property Use:

- Hunting Tract
- Campsite

## Coordinates:

- 33.66724, -89.59607

# Property Highlights

- 14.4± Acres
- 2 food small food plots
- Gravel Road frontage
- Utilities available
- Deer signs noted



Expect More. Get More.

**A Real Estate Expert  
You Can Trust!**

**KADERO  
EDLEY**  
REALTOR®

Office: 601.898.2772

Cell: 601.488.7000

Kadero@TomSmithLand.com



# The Property

# 14.4± Acres

If you've been looking for an affordable small acreage hunting tract or campsite this may be the one for you! This 14.4± surveyed acre tract in Montgomery County, MS is roughly 24 miles southeast of Grenada, MS. This tract offers 2 small food plots, gravel road frontage, and available utilities. For the avid outdoorsman this tract would be a useful campsite for your camper on your weekend hunting or fishing trips. The timber make-up is mainly hardwoods with scattered pine pockets. If you're ready to own your own small acreage hunting tract or campsite, give Kadero Edley a call today for your private viewing.



**KADERO  
EDLEY**  
REALTOR®

Office: 601.898.2772  
Cell: 601.488.7000

Kadero@TomSmithLand.com



Expect More. Get More.

# The Property



**KADERO  
EDLEY**  
REALTOR®

Office: 601.898.2772  
Cell: 601.488.7000

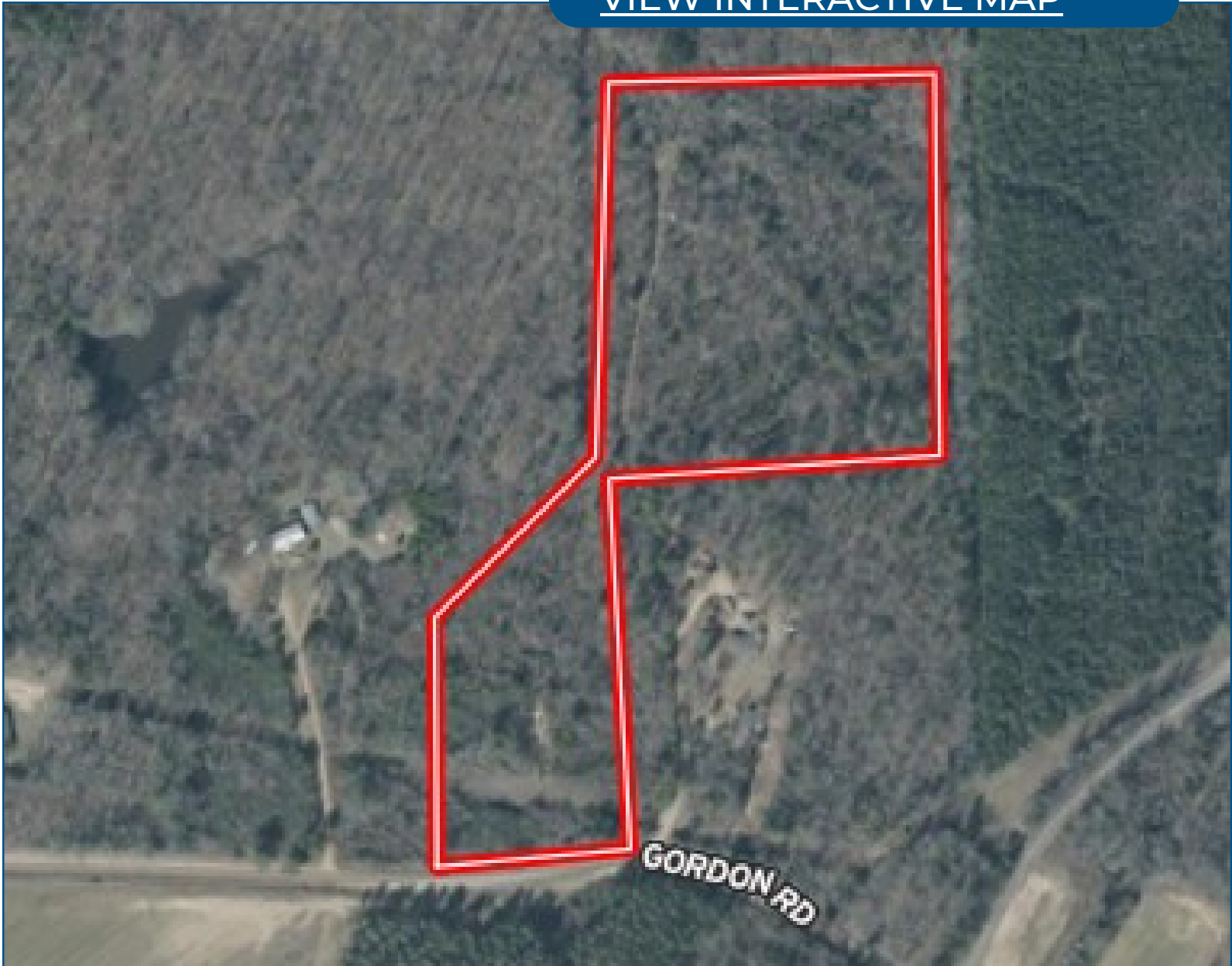
Kadero@TomSmithLand.com



Expect More. Get More.

# Aerial Map

[VIEW INTERACTIVE MAP](#)



**KADERO  
EDLEY**

REALTOR®

Office: 601.898.2772

Cell: 601.488.7000

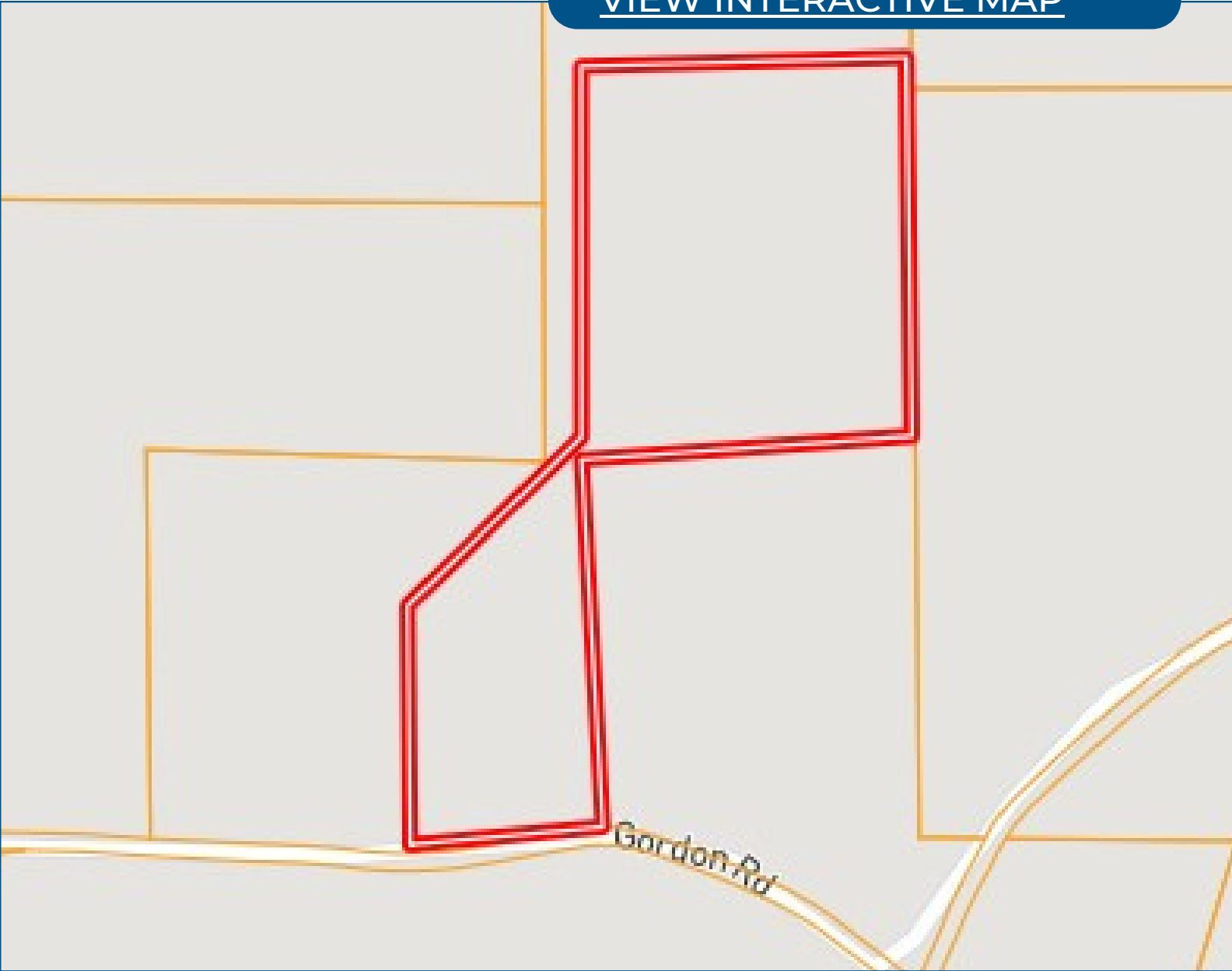
Kadero@TomSmithLand.com



Expect More. Get More.

# Ownership Map

[VIEW INTERACTIVE MAP](#)



**KADERO  
EDLEY**

REALTOR®

Office: 601.898.2772

Cell: 601.488.7000

Kadero@TomSmithLand.com



Expect More. Get More.

# Topo Map

[VIEW INTERACTIVE MAP](#)



**KADERO  
EDLEY**

REALTOR®

Office: 601.898.2772

Cell: 601.488.7000

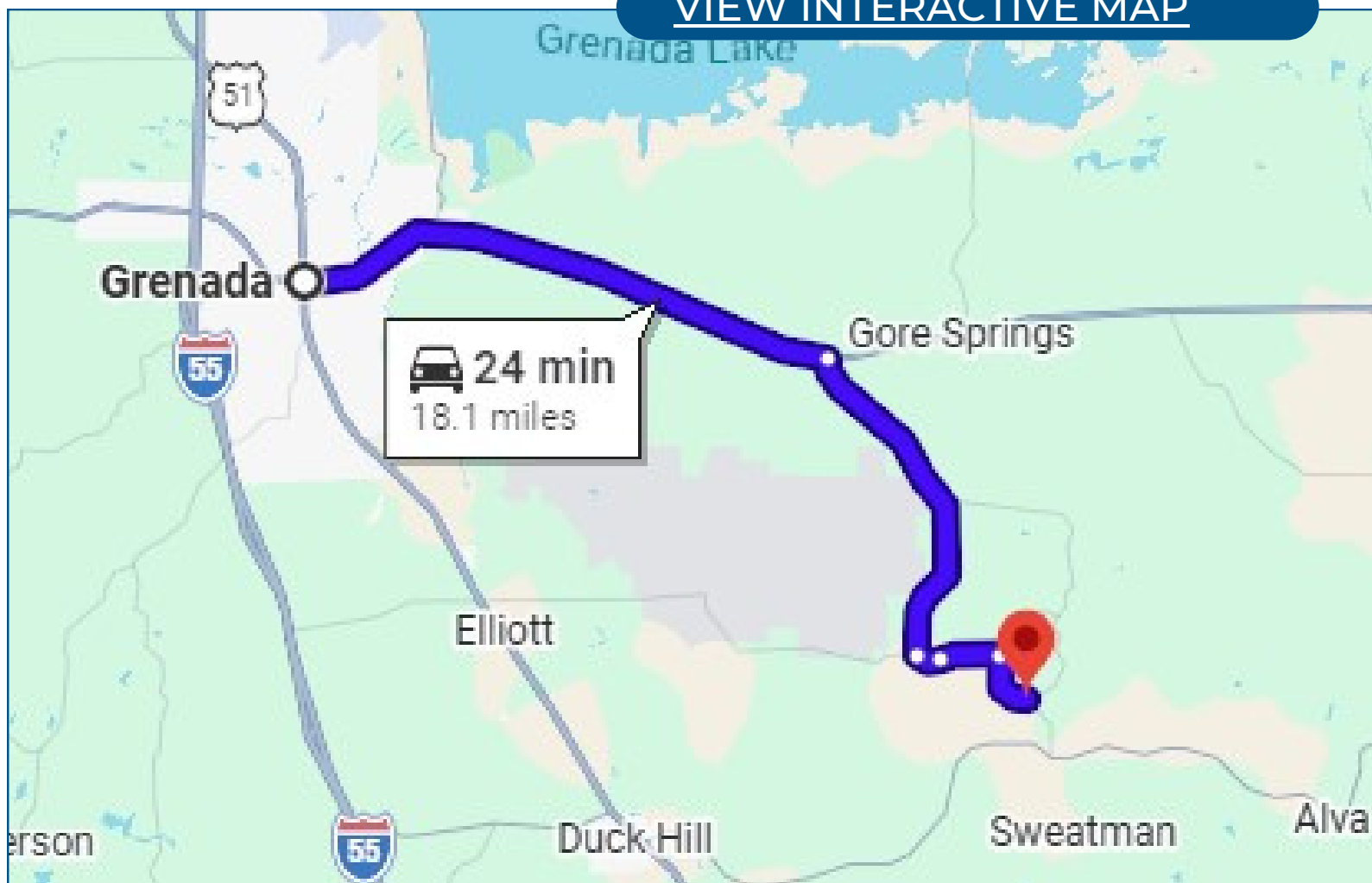
Kadero@TomSmithLand.com



Expect More. Get More.

# Directional Map

[VIEW INTERACTIVE MAP](#)



Directions from Grenada, MS: Travel east on MS-8 for 9.2 miles. Turn right on Providence Rd for 6 miles. Turn left on Greensboro Rd for 0.5 miles. Turn right onto Gordon Rd for 1.1 miles and the property will be on your left.

**KADERO  
EDLEY**  
REALTOR®

Office: 601.898.2772  
Cell: 601.488.7000

Kadero@TomSmithLand.com



Expect More. Get More.