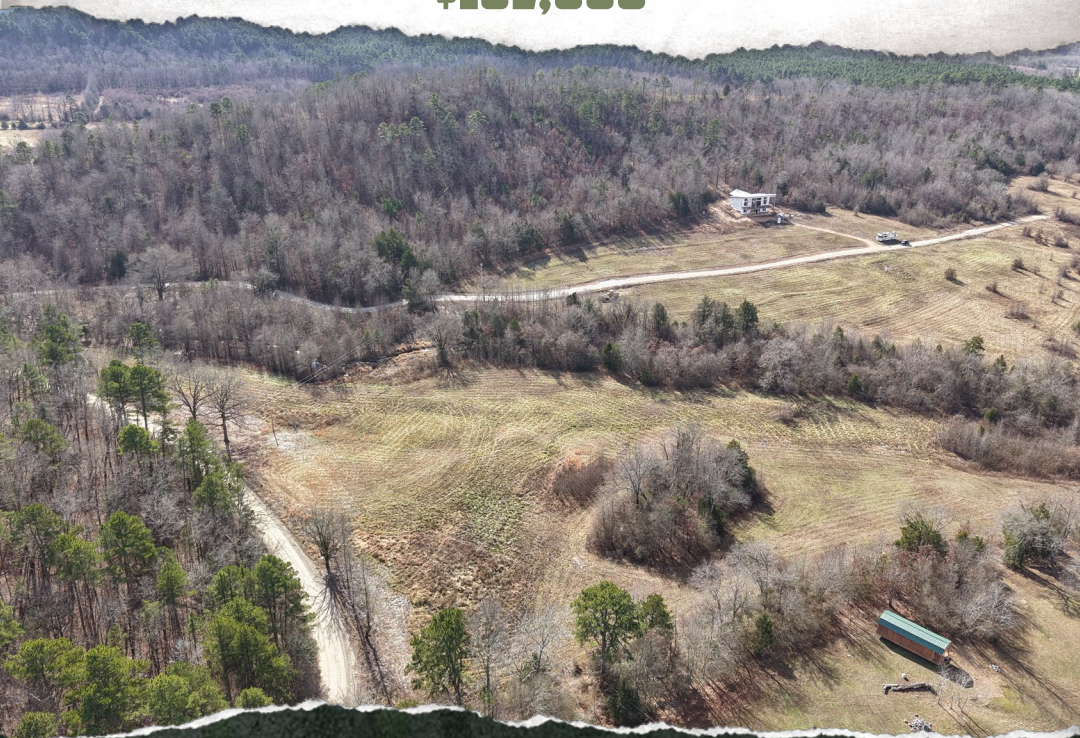




SMALLTOWN

HUNTING PROPERTIES
& REAL ESTATESM

17± ACRES
MONTGOMERY COUNTY, AR
\$102,000



OFFICE (479) 588-1034 | WWW.SMALLTOWNPROPERTIES.COM

THE MONTGOMERY 17

PROPERTY PROFILE

LOCATION:

- Jaymeson Road
Oden, AR 71961
- Montgomery County
- Across from the Ouachita
National Forest
- 3± Miles SE of the Ouachita River
- 4± Miles SE of Pine Ridge
- 11± Miles SW of Oden
- 24± Miles E of Mena
- 49± Miles W of Lake Ouachita
- 59± Miles W of Hot Springs

COORDINATES:

- 34.5564, -93.89645

TAX INFORMATION:

- TBD

PROPERTY USE:

- Hunting & Fishing
- Recreational
- Potential Home/Cabin Site
- Investment

PROPERTY INFORMATION:

- 17± Acres
- Dual County Road Frontage
- Mountain Views
- Pastureland
- Year-Round Spring
- Access to the Ouachita River
- Access to Several
Year-Round Creeks
- Electricity Available
- Additional Acreage Available



SMALLTOWN
HUNTING PROPERTIES
& REAL ESTATESM

LUKE ALSTON, ALC

EXECUTIVE BROKER - AR

MANAGING BROKER - OK

ASSOCIATE BROKER - LA

C: 479-234-1376 | O: 479-588-1034

lukealston@smalltownproperties.com

5607 Highway 71 South - Cove, AR 71937

smalltownproperties.com

Information is believed to be accurate but not guaranteed.

WELCOME TO THE MONTGOMERY 17

WELCOME TO THE MONTGOMERY 17, LOCATED NEAR THE COMMUNITY OF PINE RIDGE IN MONTGOMERY COUNTY, ARKANSAS! This 17± acre tract offers a variety of features with an affordable price point for the person looking to live the rural Arkansas lifestyle without breaking the bank. The land is predominantly pasture with scattered mature trees and a heavily wooded area where a year-round spring meanders the width of the property.

The Montgomery 17 has electricity established on the perimeter of the property for easy access for the next owner, and two sides of the tract have county road frontage for unencumbered entry and exit. Across Ryan Road is the Ouachita National Forest for all of your outdoor activities such as hunting, hiking, and exploring. The Ouachita River is a short distance away for unlimited fishing, swimming, and floating opportunities.



SMALLTOWN HUNTING PROPERTIES & REAL ESTATESM

LUKE ALSTON, ALC
EXECUTIVE BROKER - AR
MANAGING BROKER - OK
ASSOCIATE BROKER - LA
C: 479-234-1376 | O: 479-588-1034
lukealston@smalltownproperties.com
5607 Highway 71 South - Cove, AR 71937
smalltownproperties.com

Information is believed to be accurate but not guaranteed.

MORE ABOUT THE MONTGOMERY 17

Located in Pine Ridge is the world renowned Lum & Adner Museum inside the Jot 'Em Down Store where you can step back in time. If you get hungry or need supplies, you can stop in at Big T's General Store in Oden, AR, just a few minutes east, and find a dab of everything! The Montgomery 17 is ready for someone to take it to the next level, whether that be building your dream home, raising livestock, or using it as a recreational hub. Additional acreage is available.

**Disclaimer: The exact acreage will be determined by a survey.*

Contact Luke Alston today to schedule a private showing and experience #TheSmallTownWay.



SMALLTOWN
HUNTING PROPERTIES
& REAL ESTATESM

LUKE ALSTON, ALC

EXECUTIVE BROKER - AR

MANAGING BROKER - OK

ASSOCIATE BROKER - LA

C: 479-234-1376 | O: 479-588-1034

lukealston@smalltownproperties.com

5607 Highway 71 South - Cove, AR 71937

smalltownproperties.com

Information is believed to be accurate but not guaranteed.

17± ACRES

MONTGOMERY COUNTY, ARKANSAS



PROPERTY LINES ARE APPROXIMATE



SMALLTOWN
HUNTING PROPERTIES
& REAL ESTATESM

LUKE ALSTON, ALC

EXECUTIVE BROKER - AR

MANAGING BROKER - OK

ASSOCIATE BROKER - LA

C: 479-234-1376 | O: 479-588-1034

lukealston@smalltownproperties.com

5607 Highway 71 South - Cove, AR 71937

smalltownproperties.com

Information is believed to be accurate but not guaranteed.

17± ACRES

MONTGOMERY COUNTY, ARKANSAS



SMALLTOWN

HUNTING PROPERTIES
& REAL ESTATESM

LUKE ALSTON, ALC

EXECUTIVE BROKER - AR

MANAGING BROKER - OK

ASSOCIATE BROKER - LA

C: 479-234-1376 | O: 479-588-1034

lukealston@smalltownproperties.com

5607 Highway 71 South - Cove, AR 71937

smalltownproperties.com

Information is believed to be accurate but not guaranteed.

17± ACRES

MONTGOMERY COUNTY, ARKANSAS



SMALLTOWN
HUNTING PROPERTIES
& REAL ESTATESM

LUKE ALSTON, ALC

EXECUTIVE BROKER - AR

MANAGING BROKER - OK

ASSOCIATE BROKER - LA

C: 479-234-1376 | O: 479-588-1034

lukealston@smalltownproperties.com

5607 Highway 71 South - Cove, AR 71937

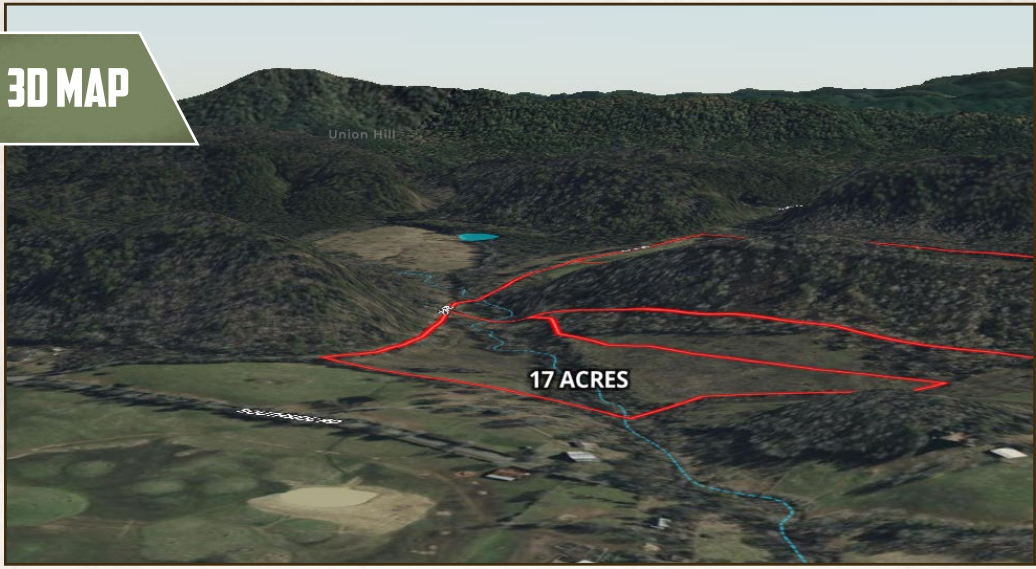
smalltownproperties.com

Information is believed to be accurate but not guaranteed.

17± ACRES

MONTGOMERY COUNTY, ARKANSAS

3D MAP



TOPOGRAPHY MAP



SMALLTOWN
HUNTING PROPERTIES
& REAL ESTATESM

LUKE ALSTON, ALC

EXECUTIVE BROKER - AR

MANAGING BROKER - OK

ASSOCIATE BROKER - LA

C: 479-234-1376 | O: 479-588-1034

lukealston@smalltownproperties.com

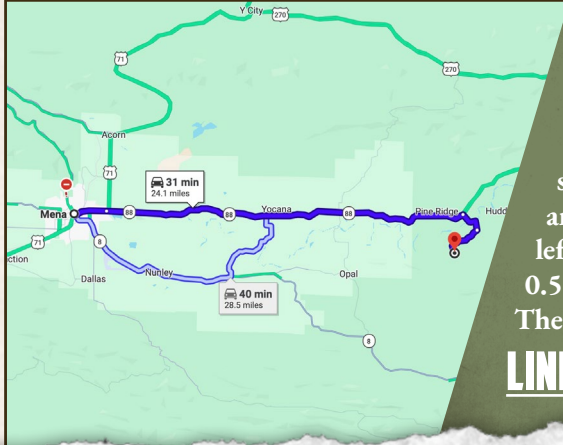
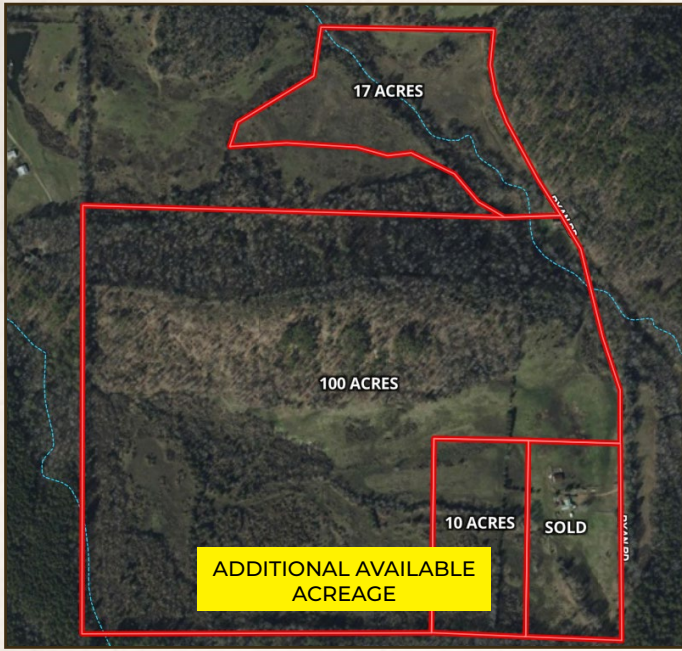
5607 Highway 71 South - Cove, AR 71937

smalltownproperties.com

Information is believed to be accurate but not guaranteed.

17± ACRES

MONTGOMERY COUNTY, ARKANSAS



Directions From Mena, AR: Travel on Highway 88 East for 19 miles. Turn right onto Little Hope Road and continue for 1.3 miles. Take a slight right turn onto Southside Road and proceed for 1.5 miles. Take a slight left turn onto Ryan Road and then after 0.5 miles, turn right onto Jaymeson Road. The destination will be on the right.

[LINK TO GOOGLE MAP DIRECTIONS](#)



SMALLTOWN
HUNTING PROPERTIES
& REAL ESTATESM

LUKE ALSTON, ALC
EXECUTIVE BROKER - AR
MANAGING BROKER - OK
ASSOCIATE BROKER - LA
C: 479-234-1376 | O: 479-588-1034
lukealston@smalltownproperties.com

5607 Highway 71 South - Cove, AR 71937

smalltownproperties.com

Information is believed to be accurate but not guaranteed.