

The Edisto River Tract | ±100 Acres

Repose Drive | Orangeburg, South Carolina



REDUCED PRICE: \$490,000

~~**SALES PRICE: \$525,000**~~

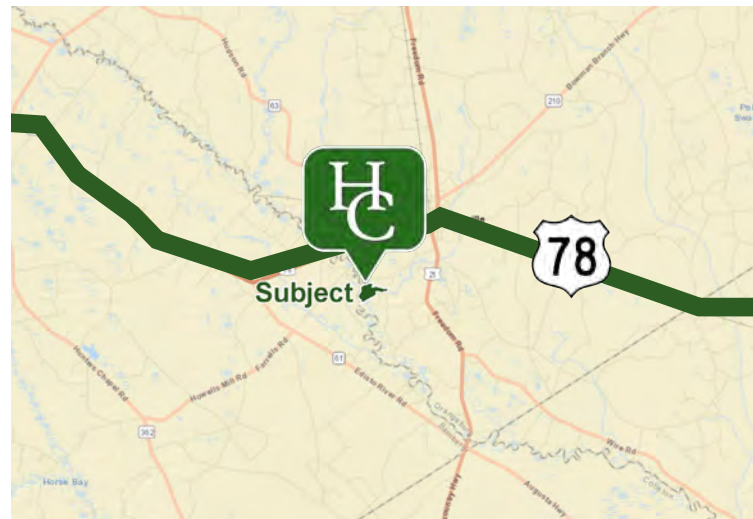


Property Features

- Orangeburg County TM# 0163-00-00-016.000
- Asking Price: \$4,900/Acre
- ±2.2 miles of total frontage on the Edisto River and interior oxbows
- ±533' frontage on Repose Drive
- ±15 acres of 10 - 12-year-old loblolly pines
- Power is available
- The Edisto is the longest free-flowing blackwater river in America
- Excellent hunting opportunities for deer, turkey, and waterfowl
- Excellent fishing opportunities for largemouth, striped bass, catfish, and black crappie

Property Distance

TOWN / CITY	DISTANCE
BRANCHVILLE	5 Minutes
COLUMBIA	1 Hour 15 Minutes
CHARLESTON	1 Hour 20 Minutes



Rusty Hamrick

+1 864 232 9040

rhamrick@naiearlefurman.com

John Etheridge

+1 864 232 9040

jetheridge@naiearlefurman.com

101 E Washington St

Greenville, SC 29601

huffcreekproperties.com

Property Description

Repose Drive | Orangeburg, South Carolina



The Edisto River tract consists of +-100 acres and offers a rare amount of water frontage that includes +-2.2 miles along the Edisto and its interior oxbows. Road frontage on Repose Dr (533') and an existing logging road provide convenient access to the property. Approximately 15 acres are 10-12 year old loblolly pines, with the rest of the land made up of bottomland and swamp.

Located just five minutes from the town of Branchville, the property is an easy drive from both Columbia (about an hour and 15 minutes) and Charleston (about 1 hour and 20 minutes). There are great hunting opportunities for deer, turkey, and waterfowl, along with excellent fishing for largemouth bass, striped bass, catfish, and black crappie. Whether you enjoy hunting, fishing, or just spending time on the river, this property offers plenty of ways to enjoy the outdoors.

Rusty Hamrick
+1 864 232 9040
rhamrick@naiearlefurman.com

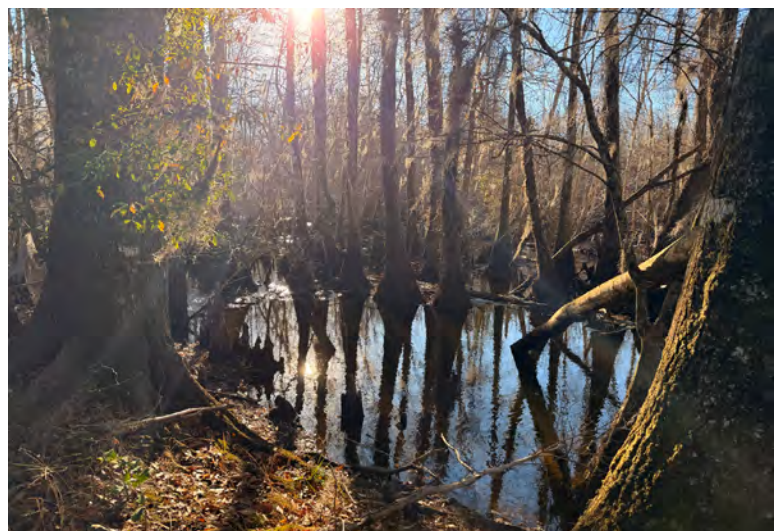
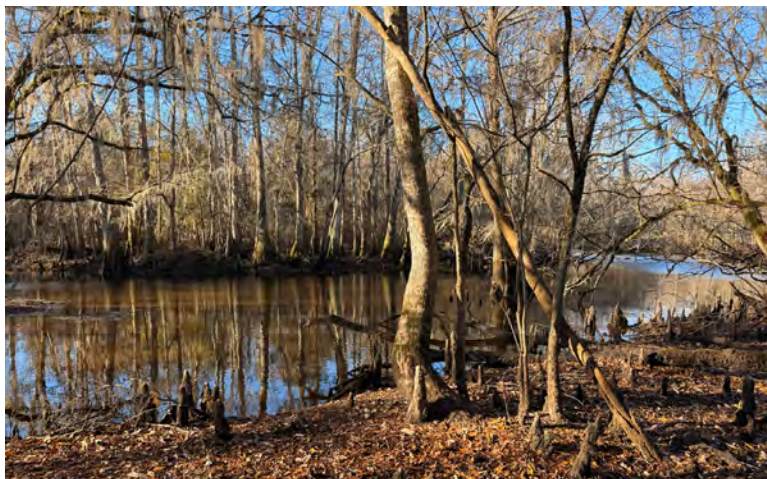
John Etheridge
+1 864 232 9040
jetheridge@naiearlefurman.com

No Warranty Or Representation, Express Or Implied, Is Made As To The Accuracy Of The Information Contained Herein, And The Same Is Submitted Subject To Errors, Omissions, Change Of Price, Rental Or Other Conditions, Prior Sale, Lease Or Financing, Or Withdrawal Without Notice, And Of Any Special Listing Conditions Imposed By Our Principals No Warranties Or Rep- resentations Are Made As To The Condition Of The Property Or Any Hazards Contained Therein Are Any To Be Implied.

The Timber and Recreational Land Division of NAI Earle Furman

Property Photos

Repose Drive | Orangeburg, South Carolina



Rusty Hamrick
+1 864 232 9040
rhamrick@naiearlefurman.com

John Etheridge
+1 864 232 9040
jetheridge@naiearlefurman.com

No Warranty Or Representation, Express Or Implied, Is Made As To The Accuracy Of The Information Contained Herein, And The Same Is Submitted Subject To Errors, Omissions, Change Of Price, Rental Or Other Conditions, Prior Sale, Lease Or Financing, Or Withdrawal Without Notice, And Of Any Special Listing Conditions Imposed By Our Principals No Warranties Or Representations Are Made As To The Condition Of The Property Or Any Hazards Contained Therein Are Any To Be Implied.

The Timber and Recreational Land Division of NAI Earle Furman

Property Photos

Repose Drive | Orangeburg, South Carolina



Rusty Hamrick
+1 864 232 9040
rhamrick@naiearlefurman.com

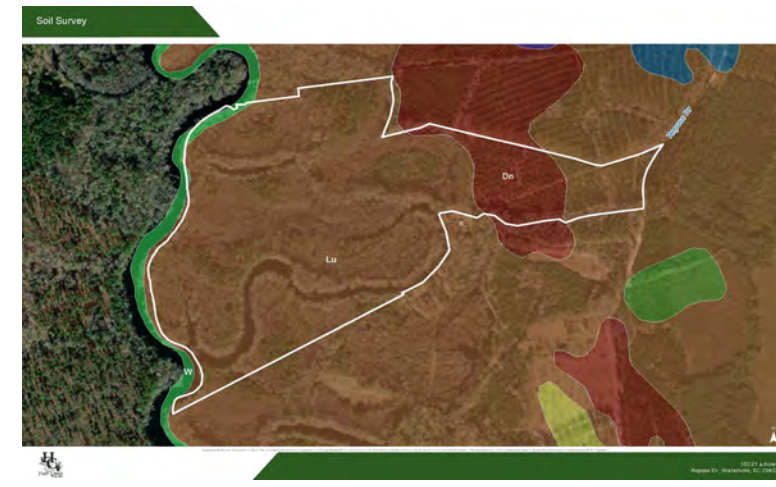
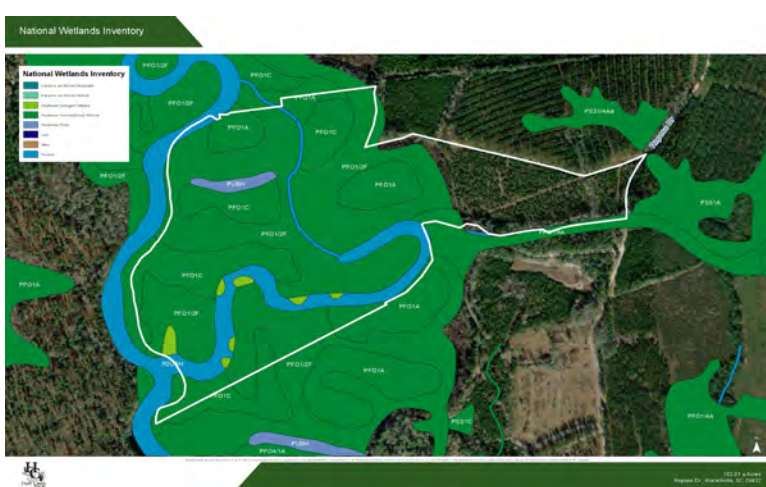
John Etheridge
+1 864 232 9040
jetheridge@naiearlefurman.com

No Warranty Or Representation, Express Or Implied, Is Made As To The Accuracy Of The Information Contained Herein, And The Same Is Submitted Subject To Errors, Omissions, Change Of Price, Rental Or Other Conditions, Prior Sale, Lease Or Financing, Or Withdrawal Without Notice, And Of Any Special Listing Conditions Imposed By Our Principals No Warranties Or Rep- resentations Are Made As To The Condition Of The Property Or Any Hazards Contained Therein Are Any To Be Implied.

The Timber and Recreational Land Division of NAI Earle Furman

Map Set

Repose Drive | Orangeburg, South Carolina



Rusty Hamrick
+1 864 232 9040
rhamrick@naiearlefurman.com

John Etheridge
+1 864 232 9040
jetheridge@naiearlefurman.com

No Warranty Or Representation, Express Or Implied, Is Made As To The Accuracy Of The Information Contained Herein, And The Same Is Submitted Subject To Errors, Omissions, Change Of Price, Rental Or Other Conditions, Prior Sale, Lease Or Financing, Or Withdrawal Without Notice, And Of Any Special Listing Conditions Imposed By Our Principals No Warranties Or Representations Are Made As To The Condition Of The Property Or Any Hazards Contained Therein Are Any To Be Implied.

The Timber and Recreational Land Division of NAI Earle Furman