

94-504

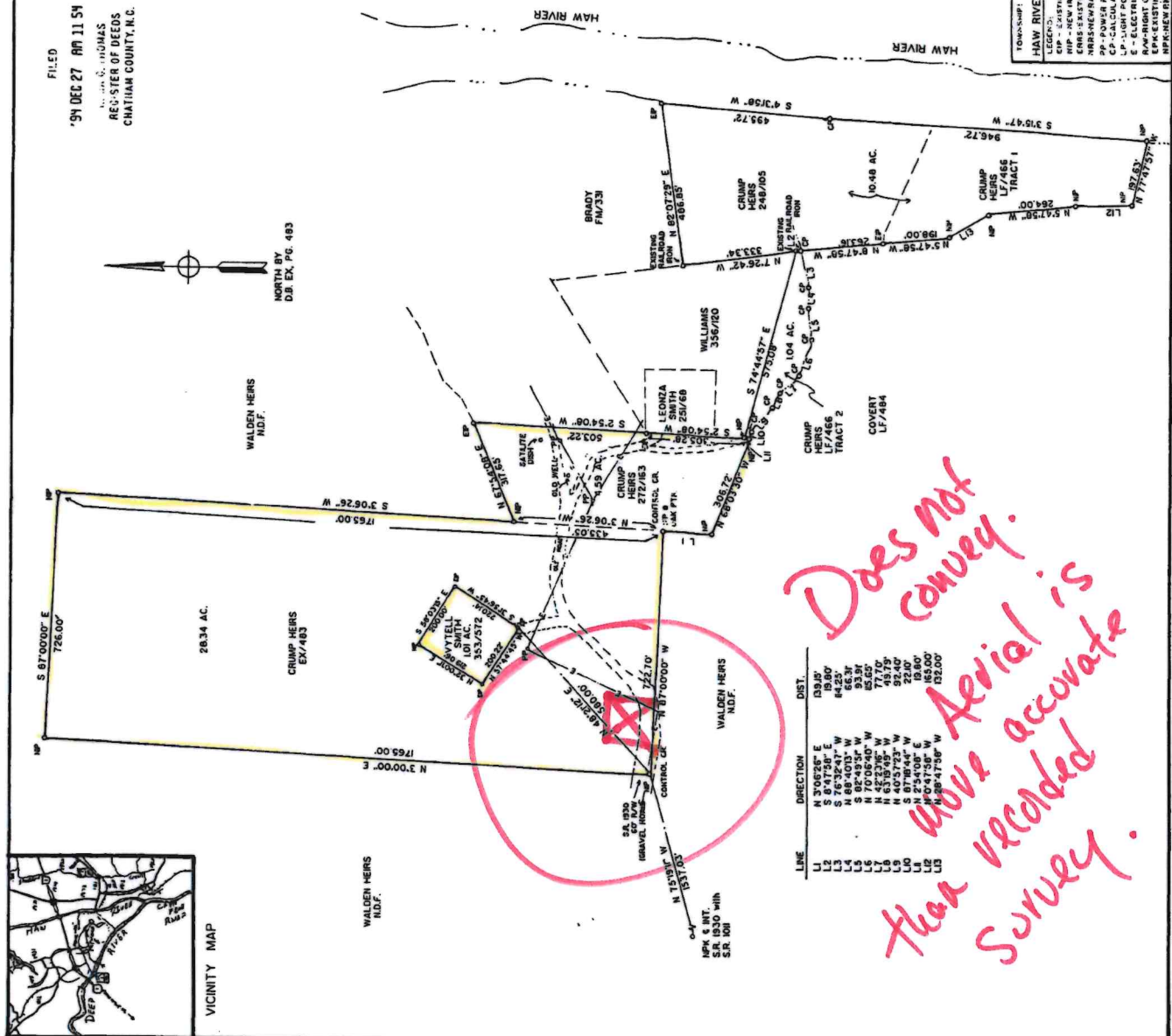
FILED  
 '94 DEC 27 AM 11 54  
 W. C. THOMAS  
 REGISTER OF DEEDS  
 CHATHAM COUNTY, N.C.

**NOTICE TO THE PUBLIC**  
 I, NELSON A. GRAMAM, CERTIFY THAT THIS PLAN AND THE DESCRIPTION BEHIND IT, UNDER MY SUPERVISION, WAS PREPARED BY ME OR UNDER MY CLOSE PERSONAL SUPERVISION AND THAT I AM A REGISTERED LAND SURVEYOR IN THE STATE OF NORTH CAROLINA, LET NO. 1007, EXPIRES ON AUGUST 1, 1997.  
 I, NELSON A. GRAMAM, CERTIFY THAT THIS PLAN AND THE DESCRIPTION BEHIND IT, UNDER MY SUPERVISION, WAS PREPARED BY ME OR UNDER MY CLOSE PERSONAL SUPERVISION AND THAT I AM A REGISTERED LAND SURVEYOR IN THE STATE OF NORTH CAROLINA, LET NO. 1007, EXPIRES ON AUGUST 1, 1997.  
 I, NELSON A. GRAMAM, CERTIFY THAT THIS PLAN AND THE DESCRIPTION BEHIND IT, UNDER MY SUPERVISION, WAS PREPARED BY ME OR UNDER MY CLOSE PERSONAL SUPERVISION AND THAT I AM A REGISTERED LAND SURVEYOR IN THE STATE OF NORTH CAROLINA, LET NO. 1007, EXPIRES ON AUGUST 1, 1997.  
 I, NELSON A. GRAMAM, CERTIFY THAT THIS PLAN AND THE DESCRIPTION BEHIND IT, UNDER MY SUPERVISION, WAS PREPARED BY ME OR UNDER MY CLOSE PERSONAL SUPERVISION AND THAT I AM A REGISTERED LAND SURVEYOR IN THE STATE OF NORTH CAROLINA, LET NO. 1007, EXPIRES ON AUGUST 1, 1997.

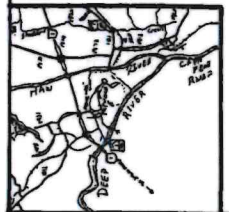
**NOTES:**  
 PROPERTY CONSIST OF ALL OF THE G. C. CRUMP HERS PROPERTY AS RECORDED IN D.B. EX. PG. 483, PG. 485, PG. 486, PG. 487, PG. 488, PG. 489, PG. 490, PG. 491, PG. 492, PG. 493, PG. 494, PG. 495, PG. 496, PG. 497, PG. 498, PG. 499, PG. 500, PG. 501, PG. 502, PG. 503, PG. 504, PG. 505, PG. 506, PG. 507, PG. 508, PG. 509, PG. 510, PG. 511, PG. 512, PG. 513, PG. 514, PG. 515, PG. 516, PG. 517, PG. 518, PG. 519, PG. 520, PG. 521, PG. 522, PG. 523, PG. 524, PG. 525, PG. 526, PG. 527, PG. 528, PG. 529, PG. 530, PG. 531, PG. 532, PG. 533, PG. 534, PG. 535, PG. 536, PG. 537, PG. 538, PG. 539, PG. 540, PG. 541, PG. 542, PG. 543, PG. 544, PG. 545, PG. 546, PG. 547, PG. 548, PG. 549, PG. 550, PG. 551, PG. 552, PG. 553, PG. 554, PG. 555, PG. 556, PG. 557, PG. 558, PG. 559, PG. 560, PG. 561, PG. 562, PG. 563, PG. 564, PG. 565, PG. 566, PG. 567, PG. 568, PG. 569, PG. 570, PG. 571, PG. 572, PG. 573, PG. 574, PG. 575, PG. 576, PG. 577, PG. 578, PG. 579, PG. 580, PG. 581, PG. 582, PG. 583, PG. 584, PG. 585, PG. 586, PG. 587, PG. 588, PG. 589, PG. 590, PG. 591, PG. 592, PG. 593, PG. 594, PG. 595, PG. 596, PG. 597, PG. 598, PG. 599, PG. 600, PG. 601, PG. 602, PG. 603, PG. 604, PG. 605, PG. 606, PG. 607, PG. 608, PG. 609, PG. 610, PG. 611, PG. 612, PG. 613, PG. 614, PG. 615, PG. 616, PG. 617, PG. 618, PG. 619, PG. 620, PG. 621, PG. 622, PG. 623, PG. 624, PG. 625, PG. 626, PG. 627, PG. 628, PG. 629, PG. 630, PG. 631, PG. 632, PG. 633, PG. 634, PG. 635, PG. 636, PG. 637, PG. 638, PG. 639, PG. 640, PG. 641, PG. 642, PG. 643, PG. 644, PG. 645, PG. 646, PG. 647, PG. 648, PG. 649, PG. 650, PG. 651, PG. 652, PG. 653, PG. 654, PG. 655, PG. 656, PG. 657, PG. 658, PG. 659, PG. 660, PG. 661, PG. 662, PG. 663, PG. 664, PG. 665, PG. 666, PG. 667, PG. 668, PG. 669, PG. 670, PG. 671, PG. 672, PG. 673, PG. 674, PG. 675, PG. 676, PG. 677, PG. 678, PG. 679, PG. 680, PG. 681, PG. 682, PG. 683, PG. 684, PG. 685, PG. 686, PG. 687, PG. 688, PG. 689, PG. 690, PG. 691, PG. 692, PG. 693, PG. 694, PG. 695, PG. 696, PG. 697, PG. 698, PG. 699, PG. 700, PG. 701, PG. 702, PG. 703, PG. 704, PG. 705, PG. 706, PG. 707, PG. 708, PG. 709, PG. 710, PG. 711, PG. 712, PG. 713, PG. 714, PG. 715, PG. 716, PG. 717, PG. 718, PG. 719, PG. 720, PG. 721, PG. 722, PG. 723, PG. 724, PG. 725, PG. 726, PG. 727, PG. 728, PG. 729, PG. 730, PG. 731, PG. 732, PG. 733, PG. 734, PG. 735, PG. 736, PG. 737, PG. 738, PG. 739, PG. 740, PG. 741, PG. 742, PG. 743, PG. 744, PG. 745, PG. 746, PG. 747, PG. 748, PG. 749, PG. 750, PG. 751, PG. 752, PG. 753, PG. 754, PG. 755, PG. 756, PG. 757, PG. 758, PG. 759, PG. 760, PG. 761, PG. 762, PG. 763, PG. 764, PG. 765, PG. 766, PG. 767, PG. 768, PG. 769, PG. 770, PG. 771, PG. 772, PG. 773, PG. 774, PG. 775, PG. 776, PG. 777, PG. 778, PG. 779, PG. 780, PG. 781, PG. 782, PG. 783, PG. 784, PG. 785, PG. 786, PG. 787, PG. 788, PG. 789, PG. 790, PG. 791, PG. 792, PG. 793, PG. 794, PG. 795, PG. 796, PG. 797, PG. 798, PG. 799, PG. 800, PG. 801, PG. 802, PG. 803, PG. 804, PG. 805, PG. 806, PG. 807, PG. 808, PG. 809, PG. 810, PG. 811, PG. 812, PG. 813, PG. 814, PG. 815, PG. 816, PG. 817, PG. 818, PG. 819, PG. 820, PG. 821, PG. 822, PG. 823, PG. 824, PG. 825, PG. 826, PG. 827, PG. 828, PG. 829, PG. 830, PG. 831, PG. 832, PG. 833, PG. 834, PG. 835, PG. 836, PG. 837, PG. 838, PG. 839, PG. 840, PG. 841, PG. 842, PG. 843, PG. 844, PG. 845, PG. 846, PG. 847, PG. 848, PG. 849, PG. 850, PG. 851, PG. 852, PG. 853, PG. 854, PG. 855, PG. 856, PG. 857, PG. 858, PG. 859, PG. 860, PG. 861, PG. 862, PG. 863, PG. 864, PG. 865, PG. 866, PG. 867, PG. 868, PG. 869, PG. 870, PG. 871, PG. 872, PG. 873, PG. 874, PG. 875, PG. 876, PG. 877, PG. 878, PG. 879, PG. 880, PG. 881, PG. 882, PG. 883, PG. 884, PG. 885, PG. 886, PG. 887, PG. 888, PG. 889, PG. 890, PG. 891, PG. 892, PG. 893, PG. 894, PG. 895, PG. 896, PG. 897, PG. 898, PG. 899, PG. 900, PG. 901, PG. 902, PG. 903, PG. 904, PG. 905, PG. 906, PG. 907, PG. 908, PG. 909, PG. 910, PG. 911, PG. 912, PG. 913, PG. 914, PG. 915, PG. 916, PG. 917, PG. 918, PG. 919, PG. 920, PG. 921, PG. 922, PG. 923, PG. 924, PG. 925, PG. 926, PG. 927, PG. 928, PG. 929, PG. 930, PG. 931, PG. 932, PG. 933, PG. 934, PG. 935, PG. 936, PG. 937, PG. 938, PG. 939, PG. 940, PG. 941, PG. 942, PG. 943, PG. 944, PG. 945, PG. 946, PG. 947, PG. 948, PG. 949, PG. 950, PG. 951, PG. 952, PG. 953, PG. 954, PG. 955, PG. 956, PG. 957, PG. 958, PG. 959, PG. 960, PG. 961, PG. 962, PG. 963, PG. 964, PG. 965, PG. 966, PG. 967, PG. 968, PG. 969, PG. 970, PG. 971, PG. 972, PG. 973, PG. 974, PG. 975, PG. 976, PG. 977, PG. 978, PG. 979, PG. 980, PG. 981, PG. 982, PG. 983, PG. 984, PG. 985, PG. 986, PG. 987, PG. 988, PG. 989, PG. 990, PG. 991, PG. 992, PG. 993, PG. 994, PG. 995, PG. 996, PG. 997, PG. 998, PG. 999, PG. 1000.

**CERTIFICATE FOR PLATS**  
 North Carolina, Chatham County  
 The foregoing conditions of this plat were prepared by me or under my close personal supervision and that I am a registered land surveyor in the State of North Carolina, let no. 1007, expires on August 1, 1997.  
 Nelson A. Gramam  
 Register of Deeds

TOWNSHIP:	COUNTY:	STATE:	DATE:
HAW RIVER	CHATHAM	N.C.	07/15/94
SURVEY FOR			SCALE:
ROSA ALSTON and HERS			1"=200'
413 EVERGREEN LANE			
SANFORD, N.C. 27330			4794
LEGEND:			
CRP - EXISTING HIGH PIPE			
CRPS - EXISTING RAILROAD SPARE			
NRHS - EXISTING RAILROAD SPARE			
PP - POWER POLE			
PP - LIGHT POLE			
EP - ELEC. POINT			
EP - ELECTRICITY			
RAW - RIGHT OF WAY			
CRP - EXISTING HIGH PIPE			
CRPS - EXISTING RAILROAD SPARE			
NRHS - EXISTING RAILROAD SPARE			
PP - POWER POLE			
PP - LIGHT POLE			
EP - ELEC. POINT			
EP - ELECTRICITY			
RAW - RIGHT OF WAY			



*Does not convey. Aerial is more accurate than recorded survey.*



VICINITY MAP

15-10-01  
 12-11-94  
 105-10