



Unlock the Natural Potential of Lockhart – 248 Acres in Lauderdale County, MS
Nestled just two miles north of Meridian city limits, this 248-acre tract offers a rare blend of natural beauty, timber investment potential, and recreational opportunity. Located east of Highway 19 in the heart of Lauderdale County, the property is defined by the convergence of three scenic creeks—Roger Creek, Okatibee Creek, and Suqualena Creek—creating a thriving wildlife corridor for whitetail deer, turkeys, and small game.

Timber stands include 30 acres of 7-year-old pines, 15 acres of 4-year pines, 1.6 acres of mature 34-year pines, and 74 acres of hardwood Streamside Management Zones. A recent 120-acre clear-cut provides a clean slate for replanting or wildlife habitat development. A 6.6-acre electric transmission line Right-of-Way enhances visibility and creates ideal conditions for food plots and stand placement.

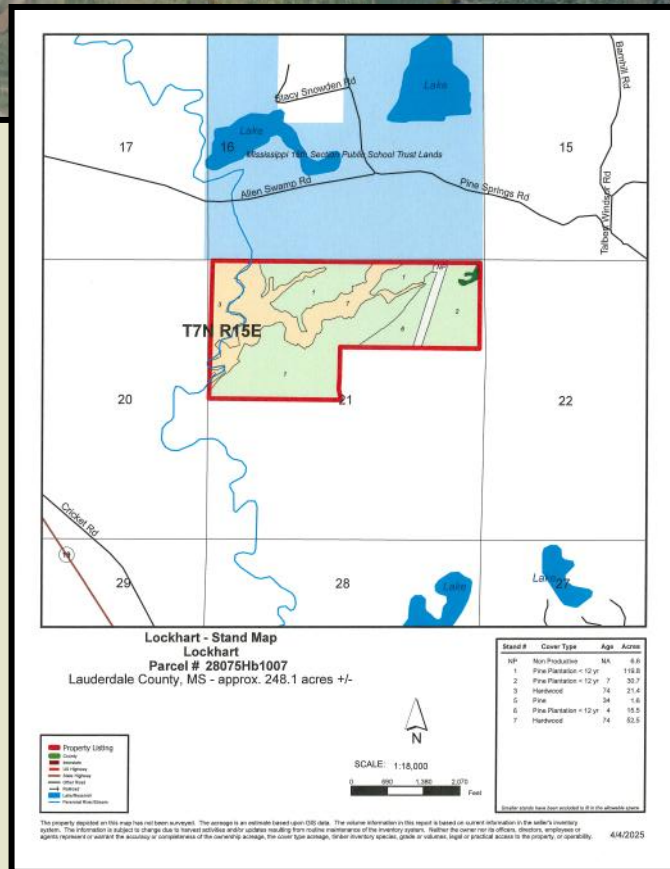
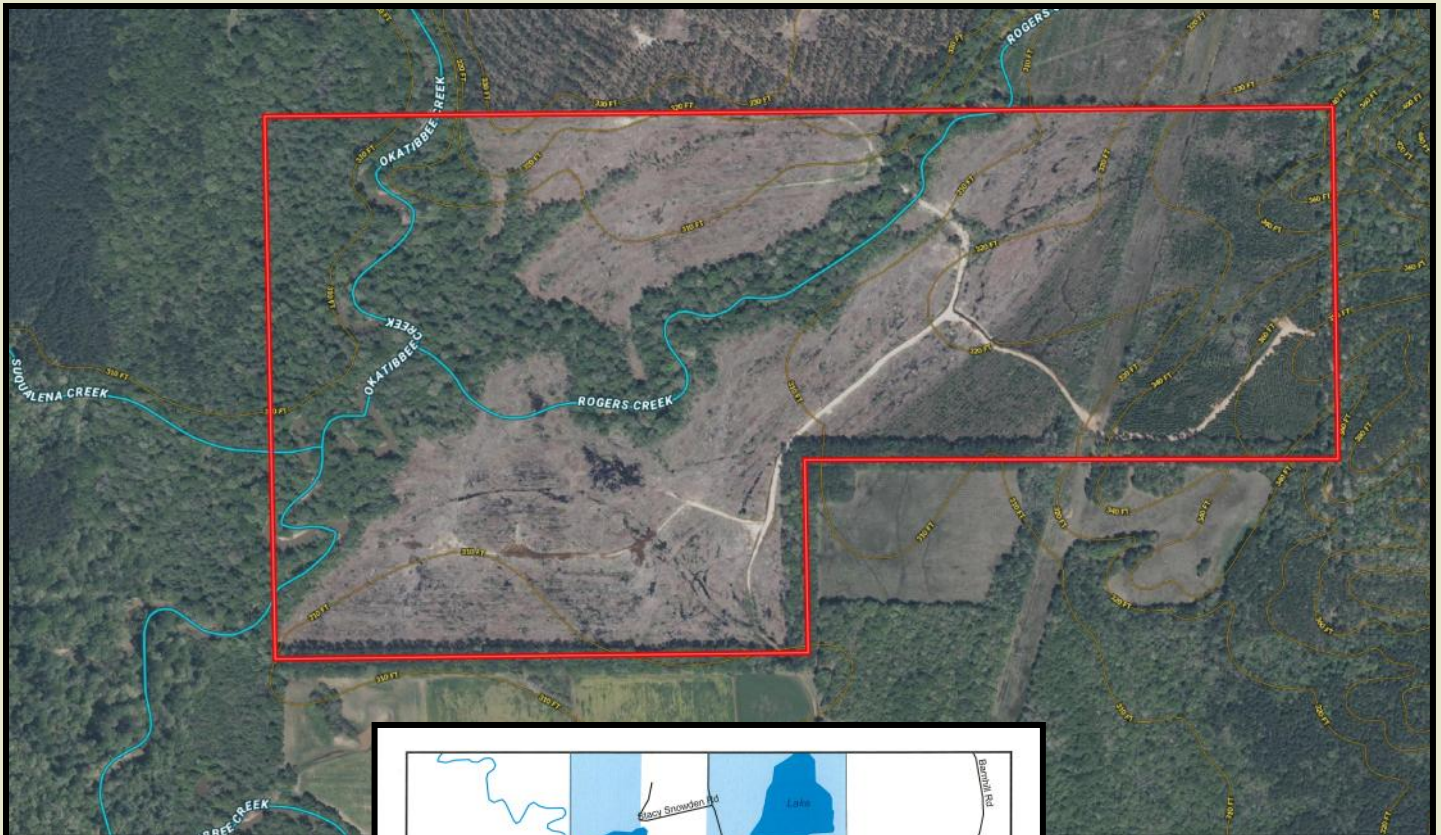
Though access is through the east adjoiner, and the tract is off-grid with no utilities, the seclusion only adds to the property's appeal for serious outdoorsmen. With large sections designated as wetlands and lying within the 100-year floodplain, the area supports healthy ecosystems and excellent waterfowl potential.

Whether you're a land investor, outdoorsman, or conservation-minded buyer, the Lockhart 241 is a unique Mississippi property waiting to be shaped by your vision. Contact Sartain's Heritage Properties today to schedule your visit to this special Lauderdale County property. **\$1550.per ac.**

Contact: J Parker Sartain - 601-506-2398 / 601-856-2720
psartain@sartainsheritage.com

EXCLUSIVE FARM, TIMBER, AND HUNTING LAND IN THE SOUTHEAST!
TRUST OUR 70+ YEARS OF EXPERTISE.

All information contained herein is supplied by sources deemed reliable, but is not guaranteed by Sartain's Heritage Properties, its Brokers or Agents. Properties are subject to errors, omissions, correction, price change, prior sale or withdrawal without notice. All Buyer's agents are required be identified on the first contact with Broker/Agents of Sartain's Heritage Properties and must accompany the buyer on showings to receive full fee participation. Otherwise, the fee participation shall be at the sole discretion of the Broker and Sartain's Heritage Properties.



Sartain's Heritage Properties, LLC.
www.SartainsHeritage.com

EXCLUSIVE FARM, TIMBER, AND HUNTING LAND IN THE SOUTHEAST. TRUST OUR 70+ YEARS OF EXPERTISE.

All information contained herein is supplied by sources deemed reliable, but is not guaranteed by Sartain's Heritage Properties, its Brokers or Agents. Properties are subject to errors, omissions, correction, price change, prior sale or withdrawal without notice. All Buyer's agents are required be identified on the first contact with Broker/Agents of Sartain's Heritage Properties and must accompany the buyer on showings to receive full fee participation. Otherwise, the fee participation shall be at the sole discretion of the Broker and Sartain's Heritage Properties.