



Osceola Ranch and Recreation

Holopaw Groves Rd, Saint Cloud, Florida 34773

Daniel Lanier, ALC
863-698-2971
daniel@saundersrealestate.com

PROPERTY OVERVIEW



Sale Price

\$5,500,000

Property Overview

The Osceola Ranch and Recreation tract is 1230 ± acres located just outside of St. Cloud. This property has everything that defines old native Florida, pine and palmetto uplands along with cypress and hardwood swamps. While currently a cattle operation, this property has many recreational possibilities such as hunting all types of game, camping, trail riding and much more. Easily accessible to US 441, this property is merely minutes to Orlando. With its proximity to development, this ranch would be a great candidate for a conservation easement.

Offering Summary

Acreage:	1,230 Acres
Price / Acre:	\$4,472
City:	Saint Cloud
County:	Osceola
Property Type:	Hunting and Recreational Land, Acreage and Estates, Conservation Easements, Farms and Cropland, Ranches and Pastureland
Video:	View Here



Specifications & Features

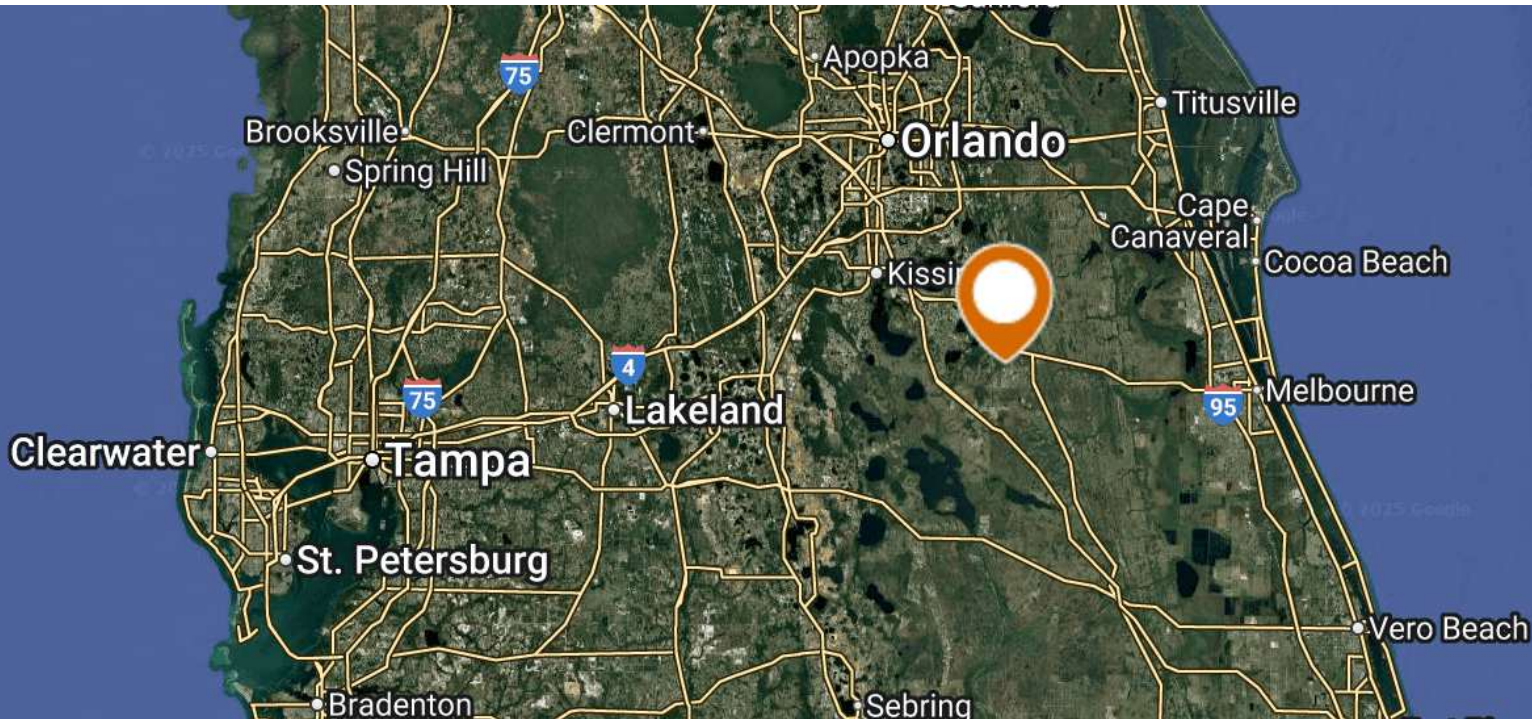
Uplands / Wetlands:	679 ± Upland Acres (55%) / 550 ± Wetland Acres (45%)
Soil Types:	Smyrna Fine Sand; Samsula Muck; Basinger Fine Sand; Depressional; Basinger Fine Sand; Myakka Fine Sand; Cassia Fine and Hontoon Muck; Immokalee Fine Sand; Pomello Fine Sand 0 To 5 Percent; Slopes; Ona Fine Sand; Water; Narcoossee Fine Sand; Paola Sand 0 To 5 Percent Slopes
Fencing:	Perimeter fenced and Cross fenced
Current Use:	Cattle Ranching and Hunting
Grass Types:	Bahia and other native grasses
Potential Recreational / Alt Uses:	Hunting for White-tailed deer, turkey, hogs and small game. Fishing and ATV riding.
Land Cover:	Grasses, trees and other native landscape

LOCATION



Location & Driving Directions

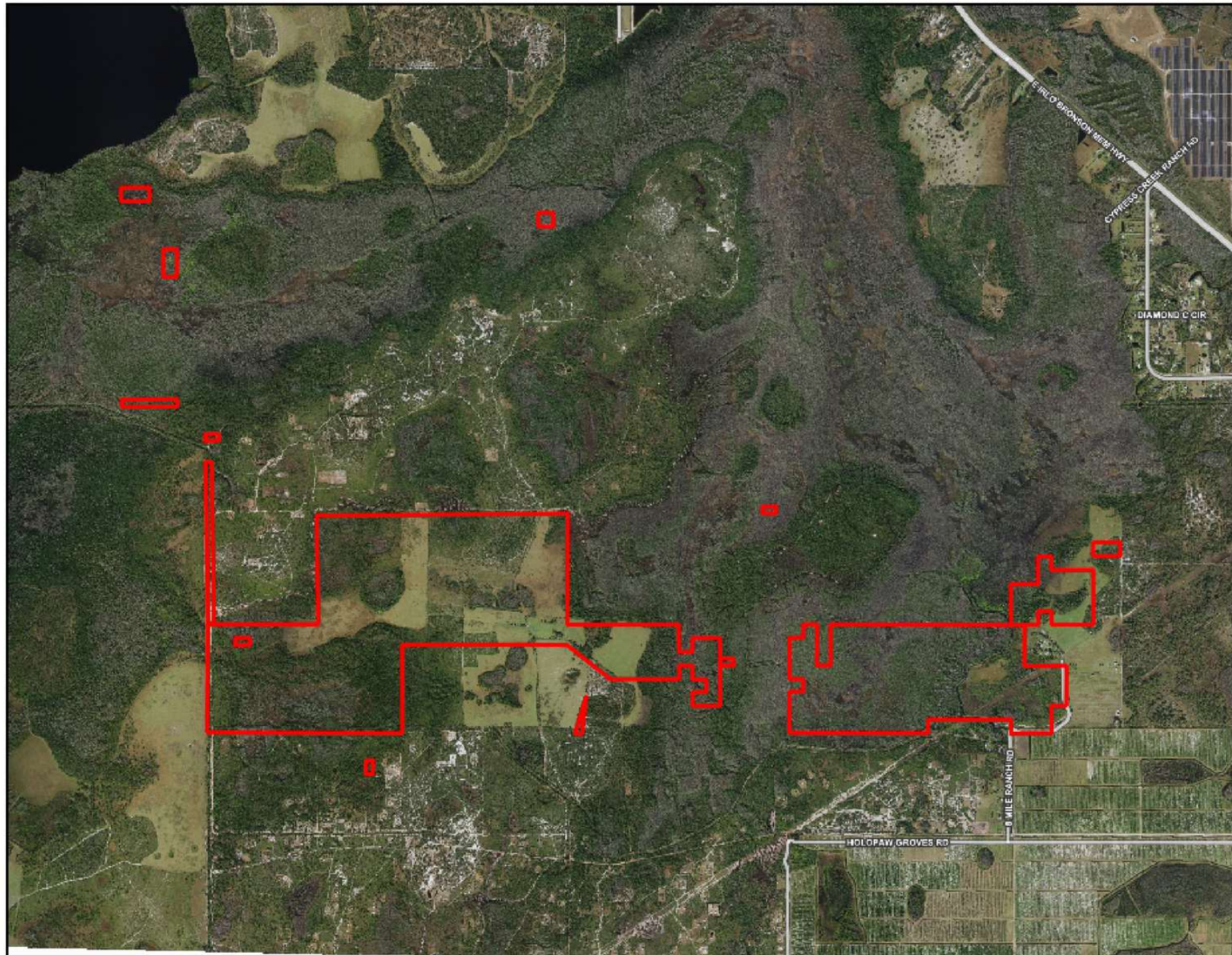
Parcel:	Multiple
GPS:	28.1301631, -81.1313872
Driving Directions:	Turn S onto 441 and travel 2 mi to Holopaw Groves Rd; Turn W onto Holopaw Groves Road and travel 3 mi; Turn N onto 8 Mile Ranch Road; Property is adjacent
Showing Instructions:	Call Daniel Lanier



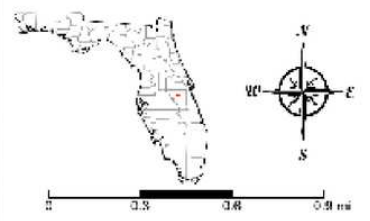
Map data ©2025 Google
Imagery ©2025 NASA

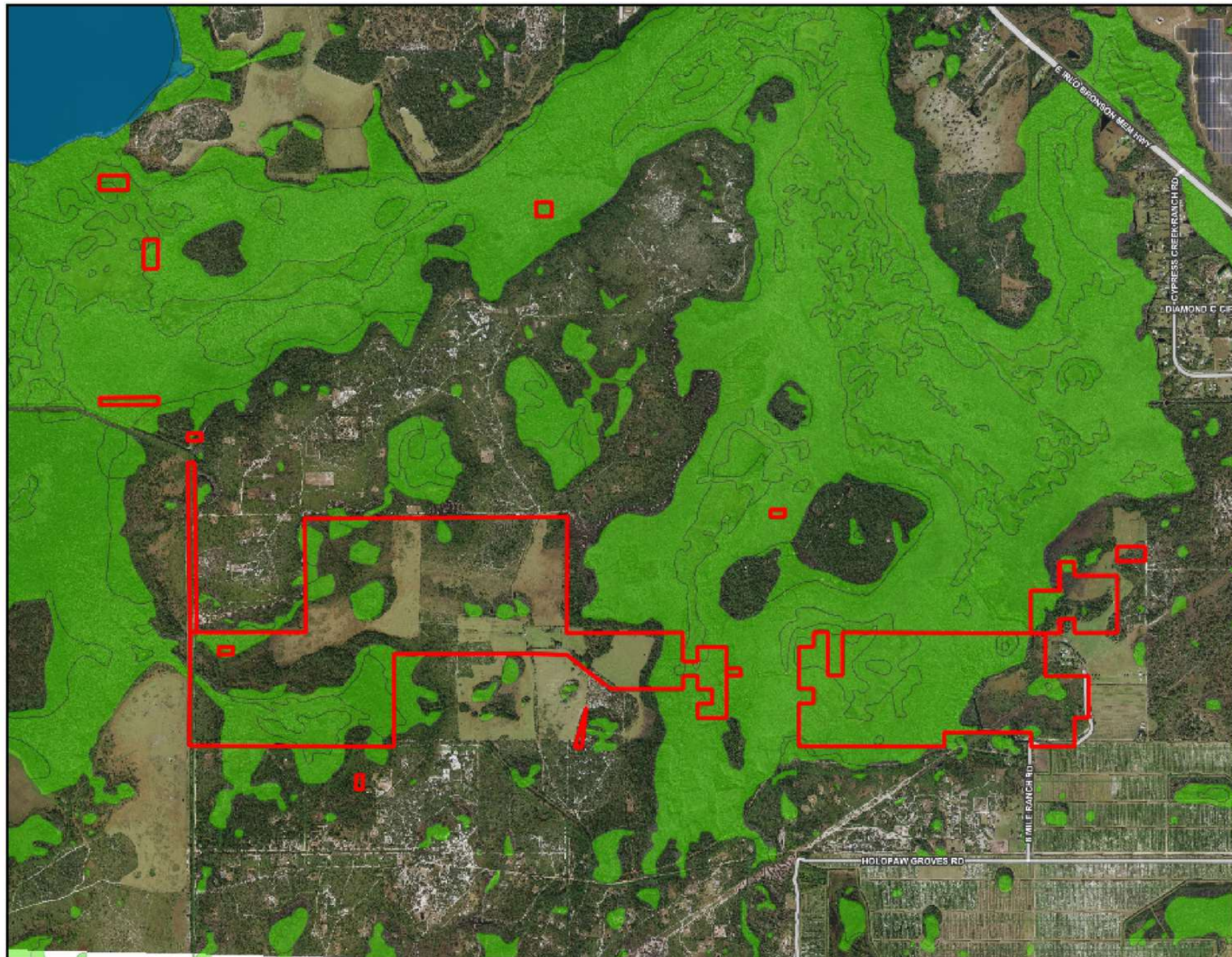






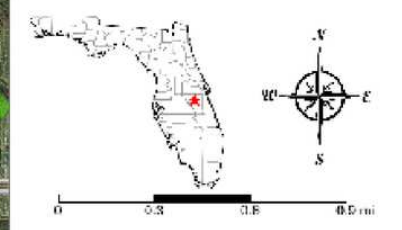
- County Boundaries
- Polygons Drawing
- Lines Drawing
- Labels Drawing
- Points Drawing
- Streets MapWise

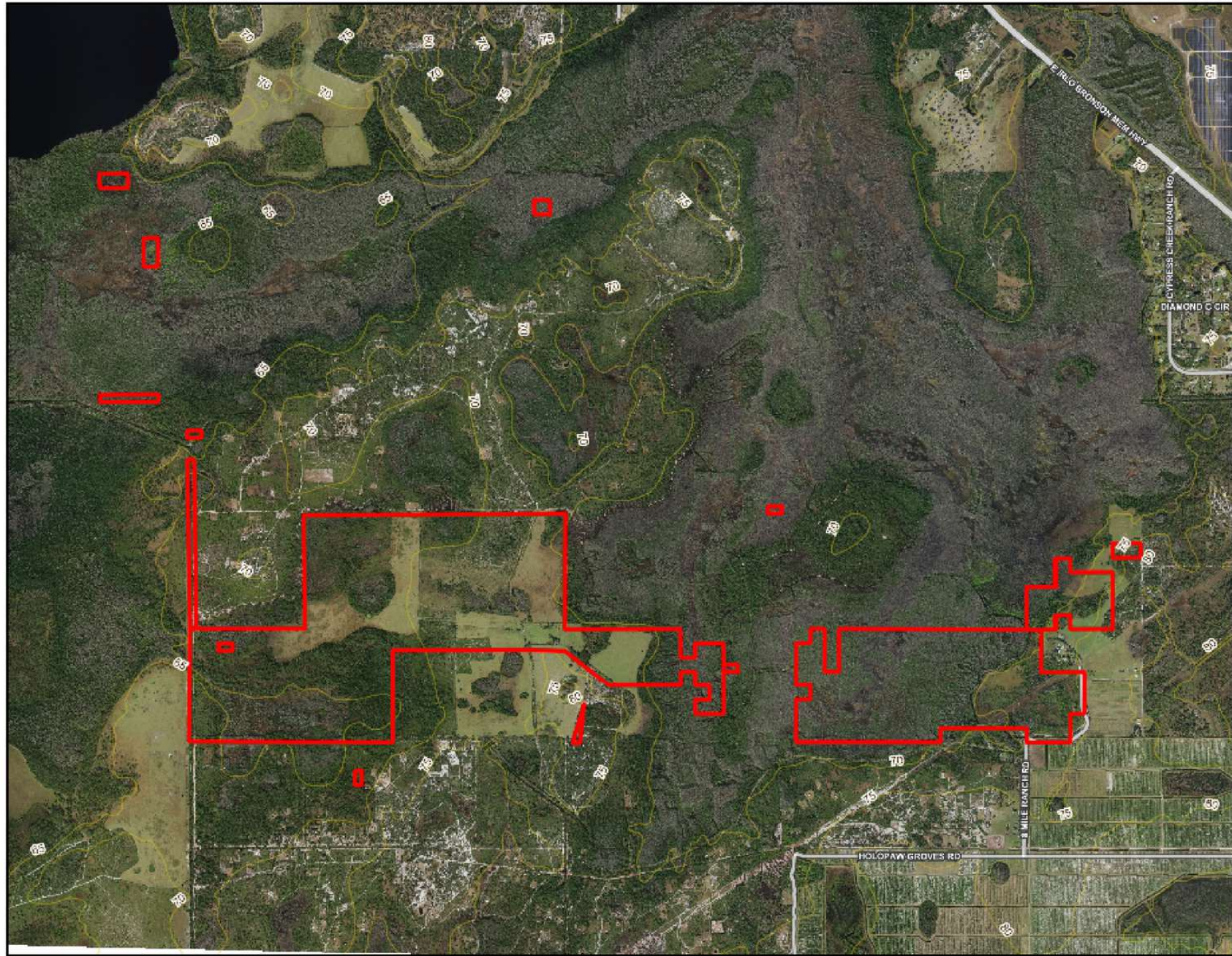




- County Boundaries
- Polylines Drawing
- Lines Drawing
- Labels Drawing
- Points Drawing
- Streets MapWise
- Estuarine
- Lacustrine
- Marine
- Rhizustrine
- Riverine

CODE	DESC	ACRES
PF06F	Freshwater Forested/Shrub Wetland	328.6
PF02F	Freshwater Forested/Shrub Wetland	63.6
PEM1F	Freshwater Emergent Wetland	48.9
PF07B	Freshwater Forested/Shrub Wetland	30.5
PSS1F	Freshwater Forested/Shrub Wetland	22.8
PF04C	Freshwater Forested/Shrub Wetland	13.6
PF04A	Freshwater Forested/Shrub Wetland	11.2
R2UBHx	Riverine	10.9
PEM1C	Freshwater Emergent Wetland	9.5
PF03B	Freshwater Forested/Shrub Wetland	4.0
PEM1A	Freshwater Emergent Wetland	2.8
R5UBH	Riverine	1.9
PF03C	Freshwater Forested/Shrub Wetland	1.3
PSS3C	Freshwater Forested/Shrub Wetland	.6
PF01C	Freshwater Forested/Shrub Wetland	.4
TOTAL WETLANDS		550.3
TOTAL UPLANDS		679.8
TOTAL ACRES		1,230.1





- County Boundaries
- Polygons Drawing
- Lines Drawing
- Labels Drawing
- Points Drawing
- Streets MapWise
- Five Foot Contours
- Five Foot Contours2

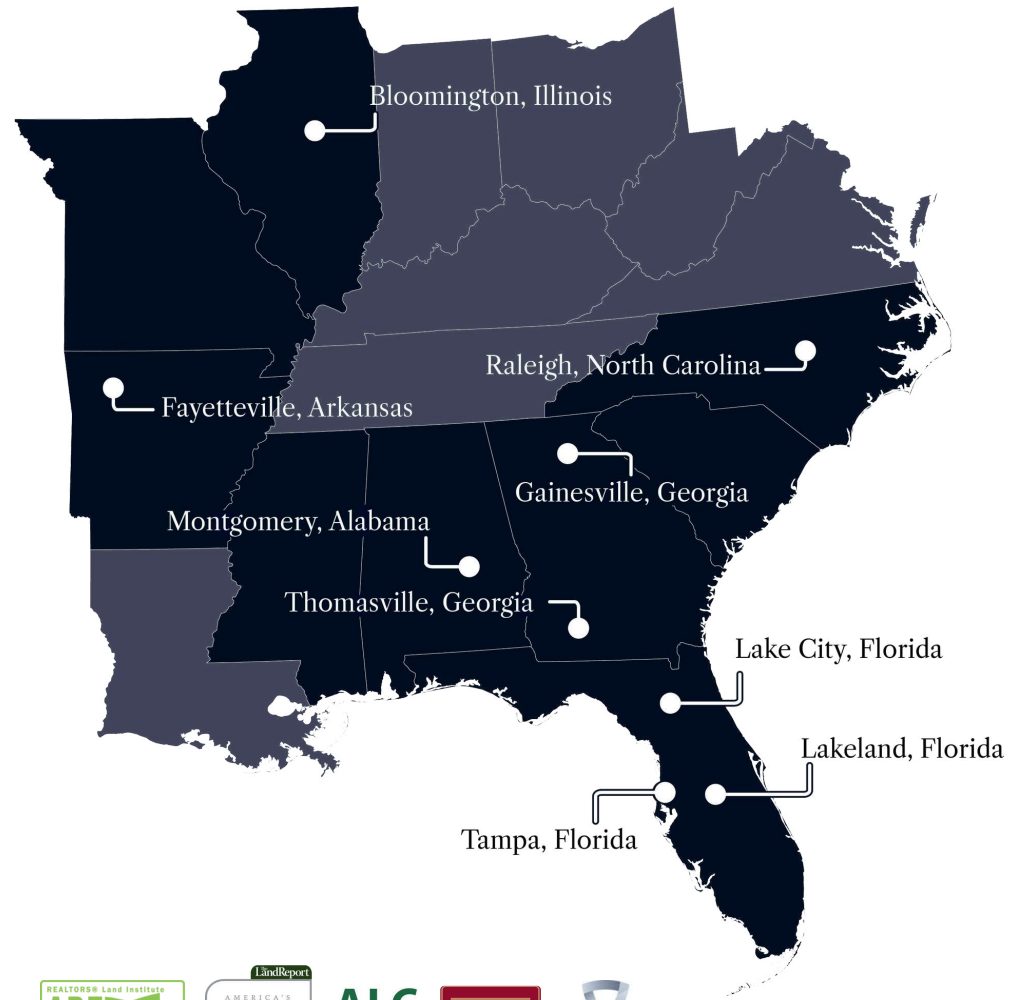


ADDITIONAL PHOTOS





At Saunders Real Estate, we deliver full-service real estate solutions, built on more than 30 years of trusted experience. Our dedicated teams offer tailored guidance backed by deep regional insight and a proven track record. We believe that successful outcomes start with strong relationships built on trust and a shared commitment to your goals.



877-518-5263 • info@saundersrealestate.com



©2026 Saunders Real Estate, LLC. All rights reserved. The information contained in this communication is strictly confidential. This information has been obtained from sources believed to be reliable but has not been verified. NO WARRANTY OR REPRESENTATION, EXPRESS OR IMPLIED, IS MADE AS TO THE CONDITION OF THE PROPERTY (OR PROPERTIES) REFERENCED HEREIN OR AS TO THE ACCURACY OR COMPLETENESS OF THE INFORMATION CONTAINED HEREIN, AND SAME IS SUBMITTED SUBJECT TO ERRORS, OMISSIONS, CHANGE OF PRICE, RENTAL OR OTHER CONDITIONS, WITHDRAWAL WITHOUT NOTICE, AND TO ANY SPECIAL LISTING CONDITIONS IMPOSED BY THE PROPERTY OWNER(S). ANY PROJECTIONS, OPINIONS OR ESTIMATES ARE SUBJECT TO UNCERTAINTY AND DO NOT SIGNIFY CURRENT OR FUTURE PROPERTY PERFORMANCE.